

 **abeomics**

Antibodies & Engineered Cell Lines™

www.abeomics.com

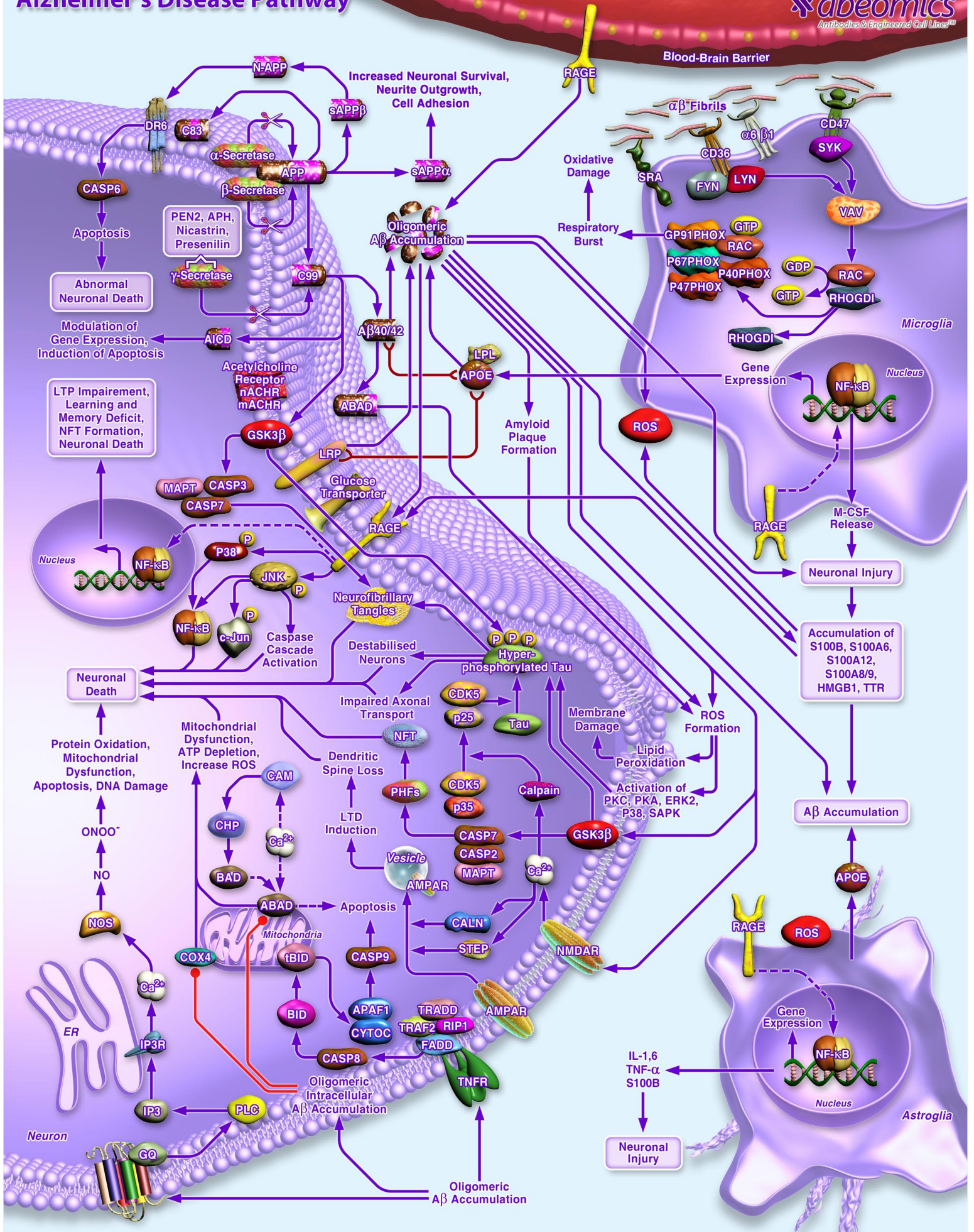


Explore our Neuroscience-related products booklet that will give you an insight about our products including antibodies, reporter and stable cell lines, kits and reagents, and recombinant proteins, tailored to advance your research in neuroscience.

Neuroscience-related Products Booklet

Updated May 2024

Alzheimer's Disease Pathway



Neuroscience Related Antibodies

Cat. No.	Product Name	Clone	Isotype	Application	Reactivity
10-12521	Mouse Monoclonal Antibody to Vimentin (Clone: BS13)	BS13	Mouse IgG1	IHC	Human
10-4158	Monoclonal Antibody to h/m CD11b (Clone: M1/70)	M1/70	Rat IgG2b Kappa	FACS	Human
10-4171	Monoclonal antibody to CD68 (Clone: ABM53F5)	ABM53F5	mouse IgG2b, kappa	FACS, WB	Human
10-4185	Monoclonal Antibody to human CD45 (Clone: EO-1)	EO-1	Mouse IgG2a	IHC, FACS, WB	Human
10-7504	Monoclonal Antibody to CD56 (Clone: 123C3)	123C3	Mouse IgG1 Kappa	IHC, FACS	Human
10-7504-F	Monoclonal Antibody to CD56-FITC conjugated (Clone: 123C3)	123C3	Mouse IgG1, Kappa	FACS	Human
10-7546	Monoclonal Antibody to E-cadherin (Clone: ABM43F8)	ABM43F8	Mouse IgG1 Kappa	IHC, WB	Human
10-8015	Monoclonal Antibody to SOX2 (Clone: ABM46A5)	ABM46A5	Mouse IgG2b Kappa	WB	Mouse
11-13002	Polyclonal Antibody to Beta Tubulin		Rabbit IgG	WB	Rat, Mouse, Human
11-7545	Polyclonal Antibody to E Cadherin		Rabbit IgG	WB	Human
11-7554	Polyclonal Antibody to SOX2		Rabbit IgG	WB	Human
11-7555	Polyclonal Antibody to Vimentin		Rabbit IgG	WB	Human
11-7570	Polyclonal Antibody to GAD65		Rabbit IgG	WB	Human
11-8006	Polyclonal Antibody to Neurotensin receptor 2		Rabbit IgG	WB	Human
11-8104	Polyclonal Antibody to GAD67		Rabbit IgG	WB	Mouse, Human
12-1063	Anti-AIF1 / Iba1 (Microglia Marker) Recombinant Mouse Monoclonal Antibody (Clone: rAIF1/1909)	rAIF1/1909	Mouse IgG1, kappa	IHC	Human
12-1184	Anti-GFAP (Astrocyte & Neural Stem Cell Marker) Recombinant Mouse Monoclonal Antibody (Clone: rASTRO/789)	rASTRO/789	Mouse IgG1, kappa	FACS, WB, IHC	Human, Mouse, Rat
12-1185	Anti-GFAP (Astrocyte & Neural Stem Cell Marker) Recombinant Rabbit Monoclonal Antibody (Clone: ASTRO/1974R)	ASTRO/1974R	Rabbit IgG	FACS, IF, IHC	Human, Mouse, Rat
12-1223	Anti-Neurofilament (NF-H) (Neuronal Marker) Recombinant Mouse Monoclonal Antibody (Clone: rNF421)	rNF421	Mouse IgG1, kappa	WB,FACS,IHC	Human, Mouse, Rat
12-9274	Anti-CD40 antibody (DM100), Rabbit mAb	DM100		ELISA, FACS	Human
12-9364	Anti-CD45 antibody (DM193), Rabbit mAb	DM193		ELISA, FACS	Human
12-9370	Anti-CD56 antibody (DM202), Rabbit mAb	DM202		ELISA, FACS	Human
12-9383	Anti-GFAP(68-377) antibody (DM216), Rabbit mAb	DM216		ELISA	Human
12-9450	Anti-GDF15 antibody (DMC474); IgG1 Chimeric mAb	DMC474	Rabbit/Human Fc chimeric IgG1	FACS	Human
12-9472	Anti-GDNF antibody (DMC498); IgG1 Chimeric mAb	DMC498	Rabbit/Human Fc chimeric IgG1	FACS	Human
12-9490	Anti-APP antibody (3D7); IgG1 Chimeric mAb	3D7	Rabbit/Human Fc chimeric IgG1	FACS	Human
12-9525	Anti-GFAP(68-377) antibody(17E6), Rabbit mAb	17E6	Rabbit IgG	ELISA	Human
12-9526	Anti-GFAP(68-377) antibody(17G10), Rabbit mAb	17G10	Rabbit IgG	ELISA	Human
12-9535	Anti-GFAP(68-377) antibody(21C2), Rabbit mAb	21C2	Rabbit IgG	ELISA	Human
12-9536	Anti-GFAP(68-377) antibody(21H9), Rabbit mAb	21H9	Rabbit IgG	ELISA	Human
12-9537	Anti-GFAP(68-377) antibody(17C1), Rabbit mAb	17C1	Rabbit IgG	ELISA	Human
12-9538	Anti-GFAP(7-66) antibody(1E11), Rabbit mAb	1E11	Rabbit IgG	ELISA	Human
20-1053	Polyclonal antibody to CD40/TNFRSF5		Rabbit IgG	WB, IHC, IP	Dog, Gerbil, Rat, Human, Mouse,
30-1106	Anti-NG2 / Chondroitin sulfate proteoglycan 4 Monoclonal Antibody (Clone: 7.1)	7.1	Mouse IgG1	FACS, IP, WB, ICC	Human
30-1136	Anti-CD56 / NCAM Monoclonal Antibody (Clone: MEM-188)	MEM-188	Mouse IgG2a	FACS, IP, IHC	Human, Non-Human Primates
30-1155	Anti-Vimentin Monoclonal Antibody (Clone: VI-01)	VI-01	Mouse IgM	WB	
30-1156	Anti-GFAP Monoclonal Antibody (Clone: GF-01)	GF-01	Mouse IgG1	IHC	Human
30-1165	Anti-betaIII-tubulin Monoclonal Antibody (Clone:TU-20)	TU-20	Mouse IgG1	FACS, WB, IHC, ICC	Broad species reactivity
30-1245	Anti-Vimentin Monoclonal Antibody (Clone: VI-RE/1)	VI-RE/1	Mouse IgG1	FACS, WB, ICC, ELISA	Human

Cat. No.	Product Name	Clone	Isotype	Application	Reactivity
30-1290	Anti-Clusterin / Apolipoprotein J Monoclonal Antibody (Clone:Hs-3)	Hs-3	Mouse IgG1	WB, IHC, ICC, ELISA	Human
30-1305	Anti-GFAP Monoclonal Antibody (Clone:GF-02)	GF-02	Mouse IgM	WB	Human
30-1307	Anti-alpha, beta-tubulin dimer Monoclonal Antibody (Clone:TU-08)	TU-08	Mouse IgM	WB, ICC	Human, Pig, Mouse
30-1320	Anti-Vimentin Monoclonal Antibody (Clone:VI-10)	VI-10	Mouse IgM	IP	Mouse
30-1407	Anti-GFAP Monoclonal Antibody (Clone:GA-5)	GA-5	Mouse IgG1	IP, WB, IHC, ICC	Human, Pig, Rat
30-1412	Anti-CD324 / E-Cadherin Monoclonal Antibody (Clone: 67A4)	67A4	Mouse IgG1	FACS, IP, WB, IHC-Fr, ICC	Human
30-1417	Anti-CD230 / Human Prion Protein (PrP) Monoclonal Antibody (Clone: EM-20)	EM-20	Mouse IgG2a	WB	Human
30-1459	Anti-Notch 1 Monoclonal Antibody (Clone:mN1A)	mN1A	Mouse IgG1	FACS, IP, WB, IHC-Fr, ICC	Human, Mouse
30-1539	Anti-CD68 Monoclonal Antibody (Clone:Y1/82A)	Y1/82A	Mouse IgG2b	FACS, IHC-Fr	Human
30-1570	Anti-CD56 / NCAM Monoclonal Antibody (Clone: LT56)	LT56	Mouse IgG2a	FACS, WB, ELISA	Human
30-1697	Anti-CD56 / NCAM Monoclonal Antibody (Clone: MEM-188)-APC Conjugated	MEM-188	Mouse IgG2a	FACS, IP, IHC	Human, Non-Human Primates
30-1725	APC Conjugated Anti-Vimentin Monoclonal Antibody (Clone: VI-RE/1)	VI-RE/1	Mouse IgG1	FACS	Human
30-1758	Anti-CD324 / E-Cadherin Monoclonal Antibody (Clone: 67A4)-APC Conjugated	67A4	Mouse IgG1	FACS, IP, WB, IHC-Fr, ICC	Human
30-1783	APC Conjugated Anti-Notch 1 Monoclonal Antibody (Clone: mN1A)	mN1A	Mouse IgG1	FACS	Human
30-1823	Anti-CD56 / NCAM Monoclonal Antibody (Clone: LT56)-APC Conjugated	LT56	Mouse IgG2a	FACS, WB, ELISA	Human
30-1851	Anti-CD56 / NCAM Monoclonal Antibody (Clone:MEM-188)-Biotin Conjugated	MEM-188	Mouse IgG2a	FACS, IP, IHC	Human, Non-Human Primates
30-1957	Anti-CD56 / NCAM Monoclonal Antibody (Clone:MEM-188)-FITC Conjugated	MEM-188	Mouse IgG2a	FACS, IP, IHC	Human, Non-Human Primates
30-1965	FITC Conjugated, Anti-betaIII-tubulin Monoclonal Antibody (Clone: TU-20)	TU-20	Mouse IgG1	FACS	Broad species reactivity
30-2046	Anti-CD324 / E-Cadherin Monoclonal Antibody (Clone: 67A4)-FITC Conjugated	67A4	Mouse IgG1	FACS, IP, WB, IHC-Fr, ICC	Human
30-2109	Anti-CD56 / NCAM Monoclonal Antibody (Clone: LT56)-FITC Conjugated	LT56	Mouse IgG2a	FACS, WB, ELISA	Human
30-2178	Anti-CD56 / NCAM Monoclonal Antibody (Clone: MEM-188)-PE Conjugated	MEM-188	Mouse IgG2a	FACS, IP, IHC	Human, Non-Human Primates
30-2221	PE Conjugated Anti-Vimentin Monoclonal Antibody (Clone: VI-RE/1)	VI-RE/1	Mouse IgG1	FACS	Human
30-2276	Anti-CD324 / E-Cadherin Monoclonal Antibody (Clone: 67A4)-PE Conjugated	67A4	Mouse IgG1	FACS, IP, WB, IHC-Fr, ICC	Human
30-2305	PE Conjugated Anti-Notch 1 Monoclonal Antibody (Clone: mN1A)	mN1A	Mouse IgG1	FACS	Human
30-2398	Anti-CD56 / NCAM Monoclonal Antibody (Clone: LT56)-PE Conjugated	LT56	Mouse IgG2a	FACS, WB, ELISA	Human
30-2427	Anti-CD56 / NCAM Monoclonal Antibody (Clone: MEM-188)-PerCP Conjugated	MEM-188	Mouse IgG2a	FACS, IP, IHC	Human, Non-Human Primates
30-2553	Anti-Human CD56 PE-DyLight® 594 (Clone : LT56)	LT56	Mouse IgG2a	FACS	Human
30-2620	Anti-Human CD230/Prion Antibody (Clone : EM-21)	EM-21	Mouse IgG2a	WB	Human
31-3318	Mouse Anti-Human CD56	MEM 188	Mouse IgG2a, kappa	IHC, FACS, IHC-Fr	
31-3319	Mouse Anti-Human CD56-FITC	MEM 188	Mouse IgG2a, kappa	IHC, FACS, IHC-Fr	
31-3320	Mouse Anti-Human CD56-FITC	MEM 188	Mouse IgG2a, kappa	IHC, FACS, IHC-Fr	
31-3321	Mouse Anti-Human CD56-Biotin Conjugated	MEM 188	Mouse IgG2a, kappa	IHC, FACS, IHC-Fr	
31-3322	Mouse Anti-Human CD56-PE	MEM 188	Mouse IgG2a, kappa	IHC, FACS, IHC-Fr	
31-3323	Mouse Anti-Human CD56-PE	MEM 188	Mouse IgG2a, kappa	IHC, FACS, IHC-Fr	
31-3324	Mouse Anti-Human CD56-R-PE/CY5	MEM 188	Mouse IgG2a, kappa	IHC, FACS, IHC-Fr	
31-3325	Mouse Anti-Human CD56-PE/CY5.5	MEM 188	Mouse IgG2a, kappa	IHC, FACS, IHC-Fr	
31-3756	Mouse Anti-Human GFAP	SB61b	Mouse IgG2b, kappa	IHC, ELISA, WB, IHC-Fr	

Cat. No.	Product Name	Clone	Isotype	Application	Reactivity
31-3757	Mouse Anti-Human GFAP-HRP Conjugated	SB61b	Mouse IgG2b, kappa	IHC, ELISA, WB, IHC-Fr	
31-3759	Mouse Anti-Human GFAP-CY3	SB61b	Mouse IgG2b, kappa	IHC, ELISA, WB, IHC-Fr	
34-1004	Monoclonal Antibody to Aldehyde dehydrogenase H1L1, ALDH1L1 (Clone: 4A12)	4A12	Mouse, IgG1	WB, IF/ICC, IHC	Human, Rat, Mouse
34-1005	Monoclonal Antibody to Aldehyde dehydrogenase H1L1, ALDH1L1 (Clone: 2E7)	4A12	Mouse, IgG2b	WB, IF/ICC, IHC	Human, Rat, Mouse
34-1006	Polyclonal Antibody to Aldehyde dehydrogenase H1L1, ALDH1L1		Rabbit, IgG	WB, IF/ICC	Human, Rat, Mouse
34-1009	Monoclonal Antibody to Amyloid- Beta (Clone: AB9)	AB9	Mouse, IgG2a	WB, IF/ICC, IHC	Human
34-1018	Monoclonal Antibody to Calbindin (Clone: 4H7)	4H7	Mouse, IgG1	WB, IF/ICC, IHC	Human, Rat, Mouse, Cow, Pig
34-1019	Monoclonal Antibody to Calbindin (Clone: 5A9)	5A9	Mouse, IgG2a	WB, IF/ICC, IHC	Human, Rat, Mouse, Cow
34-1020	Polyclonal Antibody to Calbindin		Chicken, IgY	WB, IF/ICC, IHC	Human, Cow, Rat, Mouse
34-1035	Monoclonal Antibody to Fox3/NeuN (Clone: 1B7)	1B7	Mouse, IgG2a	WB, IF/ICC, IHC	Human, Rat, Mouse
34-1036	Polyclonal Antibody to Fox3/NeuN		Rabbit, IgG	WB, IF/ICC, IHC	Human, Rat, Mouse
34-1038	Polyclonal Antibody to GAP43		Chicken, IgY	WB, IF/ICC, IHC	Human, Rat, Cow, Mouse, Pig, Horse
34-1040	Monoclonal Antibody to GAP43 (Clone: 5E8)	5E8	Mouse, IgG1	WB, ICC/IF, IHC	Human, Rat, Mouse
34-1041	Polyclonal Antibody to GAP43		Rabbit, IgG	WB, IF/ICC, IHC	Human, Rat, Cow, Mouse, Pig, Horse
34-1042	Polyclonal Antibody to Glial Fibrillary Acidic Protein, GFAP		Rabbit, IgG	WB, IF/ICC, IHC	Human, Rat, Cow, Mouse, Pig, Horse
34-1046	Polyclonal Antibody to Glial Fibrillary Acidic Protein, GFAP		Chicken, IgY	WB, IF/ICC, IHC	Human, Rat, Cow, Mouse, Pig, Horse
34-1064	Polyclonal Antibody to Microtubule Associated Protein 2, MAP2A/B		Chicken, IgY	WB, IF/ICC, IHC	Human, Rat, Mouse
34-1065	Monoclonal Antibody to Microtubule Associated Protein 2, MAP2A/B (Clone: 4H5)	4H5	Mouse, IgG1	WB, IF/ICC, IHC	Human, Rat, Mouse, Cow
34-1066	Monoclonal Antibody to Microtubule Associated Protein 2, MAP2A/B (Clone: 5H11)	5H11	Mouse, IgG1	WB, IF/ICC, IHC	Human, Rat, Mouse
34-1074	Monoclonal Antibody to Nestin (Clone: 4D11)	4D11	Mouse, IgG1	WB, IF/ICC, IHC	Human, Rat, Mouse
34-1110	Monoclonal Antibody to Alpha-synuclein (Clone: 2A7)	2A7	Mouse, IgG1	WB, IF/ICC, IHC	Human, Rat, Cow, Mouse, Pig
34-1112	Polyclonal Antibody to Alpha-synuclein		Chicken, IgY	WB, IF/ICC, IHC	Human, Rat, Cow, Mouse, Pig, Horse
34-1116	Monoclonal Antibody to Beta Tubulin (Clone: 1B12)	1B12	Mouse, IgG2b	WB, ICC/IF, IHC	Human, Monkey, Rat, Mouse
34-1117	Monoclonal Antibody to Beta Tubulin (Clone: 4E4)	4E4	Mouse, IgG2a	WB, IF/ICC, IHC	Human, Monkey, Rat, Mouse
34-1126	Polyclonal Antibody to Vimentin		Chicken, IgY	WB, IF/ICC	Human, Rat, Pig, Mouse, Cow, Horse, Chicken
34-1127	Monoclonal Antibody to Vimentin (Clone: 2A52)	2A52	Mouse, IgG1	WB, IF/ICC, IHC	Human, Rat, not Mouse
34-1128	Monoclonal Antibody to Vimentin (Clone: 2D1)	2D1	Mouse, IgG2a	WB, IF/ICC, IHC	Human, Rat, not Mouse
34-1129	Polyclonal Antibody to Vimentin		Rabbit, IgG	Western blot, ICC/IF, IHC	Human, Rat, Cow, Mouse, Pig, Horse
34-1148	Monoclonal Antibody to GAP43 (Clone: 3H14)	3H14	Mouse IgM	ICC/IF, IHC, WB	Human
35-1098	Polyclonal Antibody to Tau (Phospho-Ser356)		Rabbit IgG	WB, IF	Human, Mouse, Rat
35-1099	Polyclonal Antibody to Tau (Phospho-Ser396)		Rabbit IgG	WB, IHC	Human, Mouse, Rat
35-1101	Polyclonal Antibody to NMDAR1 (Phospho-Ser896)		Rabbit IgG	WB	Human, Mouse, Rat
35-1103	Polyclonal Antibody to Tau (Phospho-Ser235)		Rabbit IgG	WB	Human, Mouse, Rat

Cat. No.	Product Name	Clone	Isotype	Application	Reactivity
35-1104	Polyclonal Antibody to Tau (Phospho-Thr181)		Rabbit IgG	WB, IHC	Human, Mouse, Rat
35-1105	Polyclonal Antibody to Tau (Phospho-Thr205)		Rabbit IgG	WB, IHC	Human, Mouse, Rat
35-1106	Polyclonal Antibody to Tau (Phospho-Ser214)		Rabbit IgG	WB	Human, Mouse, Rat
35-1107	Polyclonal Antibody to Tau (Phospho-Thr231)		Rabbit IgG	WB, IHC	Human, Mouse, Rat
35-1108	Polyclonal Antibody to Tau (Phospho-Ser262)		Rabbit IgG	WB, IHC, IF	Human, Mouse, Rat
35-1109	Polyclonal Antibody to Tau (Phospho-Ser404)		Rabbit IgG	WB, IHC, IF	Human, Mouse, Rat
35-1161	Polyclonal Antibody to NMDAR2B (phospho-Tyr1474)		Rabbit IgG	WB, IF	Human, Mouse, Rat
35-1162	Polyclonal Antibody to Alpha-Synuclein (Phospho-Ser129)		Rabbit IgG	WB	Human, Mouse, Rat
35-1175	Polyclonal Antibody to DARPP-32 (Phospho-Thr75)		Rabbit IgG	IF	Human, Mouse, Rat
35-1180	Polyclonal Antibody to APP (Phospho-668)		Rabbit IgG	WB	Human, Mouse, Rat
35-1195	Polyclonal Antibody to Synaptotagmin 1 (Phospho-Ser309)		Rabbit IgG	IF	Human, Mouse, Rat
35-1196	Polyclonal Antibody to Synaptotagmin 1/2 (Phospho-Thr202/199)		Rabbit IgG	IF	Human, Mouse, Rat
35-1197	Polyclonal Antibody to Tyrosine Hydroxylase (Phospho-Ser31)		Rabbit IgG	WB	Human, Mouse, Rat
35-1198	Polyclonal Antibody to Tyrosine Hydroxylase (Phospho-Ser40)		Rabbit IgG	IF	Human, Mouse, Rat
35-1237	Polyclonal Antibody to Alpha-Synuclein (Phospho-Tyr125)		Rabbit IgG	WB, IF	Human
35-1238	Polyclonal Antibody to Tau (Phospho-Thr212)		Rabbit IgG	WB	Human, Mouse, Rat
35-1241	Polyclonal Antibody to GluR1 (phospho-Ser849)		Rabbit IgG	WB	Human, Mouse, Rat
35-1246	Polyclonal Antibody to synapsin (Phospho-Ser9)		Rabbit IgG	WB, IF	Rat, Mouse, Human
35-1249	Polyclonal Antibody to Tau (Phospho-Ser422)		Rabbit IgG	WB	Human, Mouse, Rat
35-1257	Polyclonal Antibody to GAP43 (Phospho-Ser41)		Rabbit IgG	IF	Human, Mouse, Rat
35-1260	Polyclonal Antibody to Alpha-Synuclein (Phospho-Tyr133)		Rabbit IgG	WB, IF	Human, Mouse, Rat
35-1261	Polyclonal Antibody to Alpha-Synuclein (Phospho-Tyr136)		Rabbit IgG	WB, IF	Human, Mouse, Rat
35-1266	Polyclonal Antibody to GluR2 (phospho-Ser880)		Rabbit IgG	WB	Rat, Mouse, Human
35-1293	Polyclonal Antibody to TrkA (Phospho-Ser791)		Rabbit IgG	WB, IF	Human, Mouse, Rat
35-1294	Polyclonal Antibody to TrkB (Phospho-Tyr515)		Rabbit IgG	IF	Human, Mouse, Rat
35-1295	Polyclonal Antibody to TrkB (Phospho-Tyr705)		Rabbit IgG	WB	Human, Mouse, Rat
35-1296	Polyclonal Antibody to Tyrosine Hydroxylase (Phospho-Ser19)		Rabbit IgG	IF	Human, Rat
35-1337	Polyclonal Antibody to Synapsin (phospho-Ser549)		Rabbit IgG	WB	Human, Mouse, Rat
35-1338	Polyclonal Antibody to Tau (phospho-Ser416)		Rabbit IgG	WB	Human, Mouse, Rat
35-1341	Polyclonal Antibody to GluR1 (phospho-Ser836)		Rabbit IgG	WB	Human, Mouse, Rat
35-1445	Polyclonal Antibody to Tau (Ab-356)		Rabbit IgG	IF	Human, Mouse, Rat
35-1446	Polyclonal Antibody to Tau (Ab-396)		Rabbit IgG	IHC, WB	Human, Mouse, Rat
35-1448	Polyclonal Antibody to Tau (Ab-235)		Rabbit IgG	WB	Human, Mouse

Cat. No.	Product Name	Clone	Isotype	Application	Reactivity
35-1449	Polyclonal Antibody to Tau (Ab-181)		Rabbit IgG	WB	Human, Mouse
35-1450	Polyclonal Antibody to Tau (Ab-205)		Rabbit IgG	WB	Human, Mouse
35-1451	Polyclonal Antibody to Tau (Ab-214)		Rabbit IgG	IF	Human, Mouse, Rat
35-1452	Polyclonal Antibody to Tau (Ab-231)		Rabbit IgG	WB, IHC	Human, Mouse, Rat
35-1453	Polyclonal Antibody to Tau (Ab-262)		Rabbit IgG	WB	Human, Mouse
35-1454	Polyclonal Antibody to Tau (Ab-404)		Rabbit IgG	WB	Human, Mouse, Rat
35-1481	Polyclonal Antibody to NMDAR1 (Ab-896)		Rabbit IgG	WB	Human, Mouse, Rat
35-1501	Polyclonal Antibody to NMDAR2B (Ab-1474)		Rabbit IgG	IF	Human, Mouse, Rat
35-1523	Polyclonal Antibody to Alpha-Synuclein (Ab-129)		Rabbit IgG	WB	Human, Mouse, Rat
35-1542	Polyclonal Antibody to APP (Ab-668)		Rabbit IgG	WB, IF	Human, Mouse, Rat
35-1543	Polyclonal Antibody to GABRB1 (Ab-434)		Rabbit IgG	WB	Rat, Mouse, Human
35-1581	Polyclonal Antibody to Alpha-Synuclein (Ab-125)		Rabbit IgG	WB	Human
35-1582	Polyclonal Antibody to Tau (Ab-212)		Rabbit IgG	WB	Human, Mouse, Rat
35-1586	Polyclonal Antibody to GluR1 (Ab-849)		Rabbit IgG	WB	Human, Mouse, Rat
35-1587	Polyclonal Antibody to GluR1 (Ab-863)		Rabbit IgG	IF	Human, Mouse, Rat
35-1592	Polyclonal Antibody to synapsin (Ab-9)		Rabbit IgG	WB	Human, Mouse, Rat
35-1595	Polyclonal Antibody to Tau (Ab-422)		Rabbit IgG	WB	Human, Mouse, Rat
35-1604	Polyclonal Antibody to GAP43 (Ab-41)		Rabbit IgG	WB, IHC, IF	Human, Mouse, Rat
35-1607	Polyclonal Antibody to Alpha-Synuclein (Ab-133)		Rabbit IgG	WB, IF	Human, Mouse, Rat
35-1608	Polyclonal Antibody to Alpha-Synuclein (Ab-136)		Rabbit IgG	WB, IF	Human, Mouse, Rat
35-1614	Polyclonal Antibody to GluR2 (Ab-880)		Rabbit IgG	WB	Human, Mouse, Rat
35-1617	Polyclonal Antibody to NMDAR1 (Ab-897)		Rabbit IgG	IF	Human, Mouse, Rat
35-1621	Polyclonal Antibody to Synaptotagmin 1 (Ab-309)		Rabbit IgG	WB, IF	Human, Mouse, Rat
35-1622	Polyclonal Antibody to Synaptotagmin 1/2 (Ab-202/199)		Rabbit IgG	WB, IF	Human, Mouse, Rat
35-1623	Polyclonal Antibody to Tyrosine Hydroxylase (Ab-31)		Rabbit IgG	WB	Mouse, Rat
35-1647	Polyclonal Antibody to TrkA (Ab-791)		Rabbit IgG	IF	Human
35-1648	Polyclonal Antibody to TrkB (Ab-705)		Rabbit IgG	WB, IF	Human, Mouse, Rat
35-1678	Polyclonal Antibody to Neurotensin receptor 2		Rabbit IgG	WB	Human
35-1679	Polyclonal Antibody to SOX2		Rabbit IgG	WB	Human, Mouse, Rat
35-1691	Polyclonal Antibody to GABA A Receptor a 3		Rabbit IgG	WB	Rat, Mouse, Human
35-1694	Polyclonal Antibody to synaptophysin 2		Rabbit IgG	WB	Human, Mouse, Rat
35-1699	Polyclonal Antibody to CD56(NCAM)		Rabbit IgG	WB	Human, Mouse, Rat
35-1702	Polyclonal Antibody to E-Cadherin(CD324)		Rabbit IgG	WB	Human, Mouse, Rat
35-1711	Polyclonal Antibody to GFAP		Rabbit IgG	WB, IF	Human, Rat
35-1713	Polyclonal Antibody to Vimentin		Rabbit IgG	WB, IF	Human, Mouse, Rat, Monkey

Cat. No.	Product Name	Clone	Isotype	Application	Reactivity
35-1756	Polyclonal Antibody to NMDANR2B Subunit		Rabbit IgG	WB	Human, Mouse, Rat
35-1758	Polyclonal Antibody to Tau		Rabbit IgG	WB	Human, Mouse, Rat
35-1761	Polyclonal Antibody to GluR1		Rabbit IgG	WB	Human, Mouse, Rat
35-1777	Polyclonal Antibody to FoxA2(HNF3beta)		Rabbit IgG	WB	Human
35-1781	Polyclonal Antibody to GAD65 (GAD2)		Rabbit IgG	WB	Human, Mouse, Rat
35-1787	Polyclonal Antibody to Tubulin beta-III		Rabbit IgG	WB	Human, Mouse
35-1788	Polyclonal Antibody to Neuroserpin		Rabbit IgG	WB	Human, Mouse, Rat
35-1793	Polyclonal Antibody to GAD67(GAD1)		Rabbit IgG	WB	Human, Mouse, Rat
35-1798	Polyclonal Antibody to Doublecortin		Rabbit IgG	WB	Human, Mouse, Rat
35-1804	Polyclonal Antibody to MAP2		Rabbit IgG	WB, IF	Human, Mouse, Rat
35-1818	Polyclonal Antibody to Glutamine Syntheta		Rabbit IgG	WB	Human, Mouse, Rat
35-1819	Polyclonal Antibody to Synaptophysin		Rabbit IgG	WB	Human, Mouse, Rat
36-1171	Monoclonal Antibody to GFAP (Astrocyte & Neural Stem Cell Marker)(Clone : SPM248)	SPM248	Mouse IgG1, kappa	FACS, IF, WB, IHC	Human, Mouse, Rat
36-1172	Monoclonal Antibody to GFAP (Astrocyte & Neural Stem Cell Marker)(Clone : SPM507)	SPM507	Mouse IgG1, kappa	FACS, IF, WB, IHC	Human, Mouse, Rat
36-1173	Monoclonal Antibody to GFAP (Astrocyte & Neural Stem Cell Marker)(Clone : ASTRO/789)	ASTRO/789	Mouse IgG1, kappa	WB, IHC	Human, Mouse, Rat
36-1174	Monoclonal Antibody to GFAP (Astrocyte & Neural Stem Cell Marker)(GA-5 + ASTRO/789)	GA-5 + ASTRO/78	Mouse IgG1, kappa	FACS, IF, WB, IHC	Human, Mouse, Rat
36-1497	Monoclonal Antibody to CD56/NCAM1 (Neuronal Cell Marker) (Clone : SPM128)	SPM128	Mouse IgG1, kappa	FACS, IF, IHC	Human, Rat
36-1498	Monoclonal Antibody to CD56 / NCAM1 / NKH1 (Neuronal Cell Marker) (Clone : 123A8; same 56C04)	123A8; same 56C04	Mouse IgG1, kappa	IF, IHC	Human
36-1499	Monoclonal Antibody to CD56 / NCAM1 / NKH1 (Neuronal Cell Marker) (Clone : SPM489)	SPM489	Mouse IgG1, kappa	FACS, IF, IHC	Human
36-1500	Monoclonal Antibody to CD56 / NCAM1 / NKH1 (Neuronal Cell Marker) (123C3.D5 + 123A8)	123C3.D5 + 123A8	Mouse IgG1, kappa + Mouse IgG1, kappa	FACS, IF, IHC	Human
36-1501	Monoclonal Antibody to CD56 / NCAM1 / NKH1 (Neuronal Cell Marker) (Clone : NCAM1/784)	NCAM1/784	Mouse IgG1, kappa	FACS, IF, IHC	Human
36-1502	Monoclonal Antibody to CD56 / NCAM1 / NKH1 (Neuronal Cell Marker) (Clone : NCAM1/795)	NCAM1/795	Mouse IgG1, kappa	FACS, IF, WB, IHC	Human, rat
36-1515	Monoclonal Antibody to NGF-Receptor (p75) / CD271 (Soft Tissue Tumor Marker) (Clone : NGFR5)	NGFR5	Mouse IgG1, kappa	FACS, IF, IHC	Human
36-1516	Monoclonal Antibody to NGF-Receptor (p75) / CD271 (Soft Tissue Tumor Marker) (Clone : SPM299)	SPM299	Mouse IgG1, kappa	FACS, IF, IHC	Human
36-1517	Monoclonal Antibody to NGF-Receptor (p75) / CD271 (Soft Tissue Tumor Marker) (Clone : NTR/912)	NTR/912	Mouse IgG1, kappa	FACS, IF, IHC	Human
36-1518	Monoclonal Antibody to NGF-Receptor (p75) / CD271 (Soft Tissue Tumor Marker) (NGFR5 + NTR/912)	NGFR5 + NTR/912	Mouse IgG1, kappa + Mouse IgG1, kappa	FACS, IF, IHC	Human
36-1799	Monoclonal Antibody to Vimentin (Mesenchymal Cell Marker)(Clone : VM452)	VM452	Mouse IgG1, kappa	FACS, WB, IHC	Human
36-1800	Monoclonal Antibody to Vimentin (Mesenchymal Cell Marker) (Clone : SPM576)	SPM576	Mouse IgG1, kappa	FACS, WB, IHC	Human
36-1801	Monoclonal Antibody to Vimentin (Mesenchymal Cell Marker) (Clone : LN-6)	LN-6	Mouse IgM, kappa	IHC	Human, Rat, Mouse
36-1802	Monoclonal Antibody to Vimentin (Mesenchymal Cell Marker) (Clone : VM1170)	VM1170	Mouse IgG1, kappa	WB, IHC	Human
36-1939	Monoclonal Antibody to CD44 / HCAM Std. (Clone : SPM544)	SPM544	Mouse IgG2a, kappa	IF, Functional Assay, WB, IHC	Human
36-1940	Monoclonal Antibody to CD44 / HCAM Std. (Clone : SPM521)	SPM521	Mouse IgG2a, kappa	IF, Functional Assay, WB, IHC	Human
36-1941	Monoclonal Antibody to CD44 / HCAM Std. (Clone : HCAM/918)	HCAM/918	Mouse IgG2a, kappa	Functional Assay, WB, FACS, IF, IHC	Human

Cat. No.	Product Name	Clone	Isotype	Application	Reactivity
36-1942	Monoclonal Antibody to CD44 / HCAM Std. (Clone : DF1485)	DF1485	Mouse IgG1, kappa	FACS, IF, IHC	Human, Mouse
36-1943	Monoclonal Antibody to CD44 / HCAM Std. (Clone : HCAM/1097)	HCAM/1097	Mouse IgG1, kappa	IHC	Human, Mouse
36-1965	Monoclonal Antibody to CD68 (Macrophage Marker) (Clone : KP1)	KP1	Mouse IgG1, kappa	IHC	
36-1966	Monoclonal Antibody to CD68 (Macrophage Marker) (Clone : SPM130)	SPM130	Mouse IgG1, kappa	FACS, IF, IHC	Human
36-1967	Monoclonal Antibody to CD68 (Macrophage Marker) (Clone : C68/684)	C68/684	Mouse IgG1, kappa	WB, IF, FACS, IHC	Human, Mouse, Rat
36-1970	Monoclonal Antibody to CD68 (Macrophage Marker) (Clone : CD68/G2)	CD68/G2	Mouse IgG1, kappa	IHC	Human
36-2007	Anti-Occludin (Marker of Early Blood Brain Barrier Damage) Monoclonal Antibody (Clone: OCLN/2181)	OCLN/2181	Mouse IgG1, kappa	WB, IHC	Human
36-2008	Anti-Occludin (OCLN) (Tight Junctions Marker) Monoclonal Antibody (Clone:OCLN/2183)	OCLN/2183	Mouse IgG1, kappa	IHC	Human
36-2019	Anti-OLIG2 (Marker of Glial Brain Tumors) Monoclonal Antibody (Clone: OLIG2/2400)	OLIG2/2400	Mouse IgG1, kappa	IHC	Human
36-2029	Anti-Tubulin beta 3 / TUBB3 (Neuronal & Stem Cell Marker) Monoclonal Antibody (Clone: TUBB3/3731)	TUBB3/3731	Mouse IgG1, kappa	WB, IHC	Human
36-2030	Anti-Tubulin beta 3 / TUBB3 (Neuronal & Stem Cell Marker) Monoclonal Antibody (Clone: TUBB3/3732)	TUBB3/3732	Mouse IgG2a, kappa	WB, IHC	Human
36-2046	Anti-Nestin (Cancer Stem Cell Marker) Monoclonal Antibody (Clone: NES/2911)	NES/2911	Mouse IgG	IHC	Human
36-2085	Anti-Creatine Kinase-BB (CK-BB) Monoclonal Antibody (Clone: CKB/1268)	CKB/1268	Mouse IgG1, kappa	ELISA	Human
36-2086	Anti-Creatine Phosphokinase-BB (CK-BB) Monoclonal Antibody (Clone: CPTC-CKB-2)	CPTC-CKB-2	Mouse IgG2b, kappa	WB, IHC	Human
36-2156	Anti-Drebrin 1 (DBN1) Monoclonal Antibody (Clone: DBN1/2879)	DBN1/2879	Mouse IgG1, kappa	WB, IHC	Human
36-2157	Anti-Drebrin 1 (DBN1) Monoclonal Antibody (Clone: DBN1/2880)	DBN1/2880	Mouse IgG1, kappa	WB, IHC	Human
36-2158	Anti-Drebrin 1 (DBN1) Monoclonal Antibody (Clone: DBN1/3393)	DBN1/3393	Mouse IgG1, kappa	WB, IHC	Human
36-2205	Anti-AIF1 / Iba1 (Microglia Marker) Monoclonal Antibody (Clone: AIF1/1909)	AIF1/1909	Mouse IgG1, kappa	IHC	Human
36-2207	Anti-AIF1 / Iba1 (Microglia Marker) Monoclonal Antibody (Clone: AIF1/2493)	AIF1/2493	Mouse IgG2c, kappa	IHC	Human
36-2215	Anti-NSE gamma (Neuron Specific Enolase, gamma) (Neuroendocrine Marker) Monoclonal Antibody (Clone: ENO2/1375)	ENO2/1375	Mouse IgG2b, kappa	IHC, WB	Human
36-2216	Anti-NSE gamma (Neuron Specific Enolase, gamma) (Neuroendocrine Marker) Monoclonal Antibody (Clone: SPM347)	SPM347	Mouse IgG2b, kappa	FACS, IF, WB, IHC	Human
36-2217	Anti-NSE gamma (Neuron Specific Enolase, gamma) (Neuroendocrine Marker) Monoclonal Antibody (Clone: ENO2/1462)	ENO2/1462	Mouse IgG2b, kappa	IHC	Human
36-2218	Anti-NSE gamma (Neuron Specific Enolase, gamma) (Neuroendocrine Marker) Monoclonal Antibody (Clone: NSE-P2)	NSE-P2	Mouse IgG1, kappa	FACS, IF, IHC	Human
36-2359	Anti-GAD1 / GAD67 (GABAergic Neuronal Marker) Monoclonal Antibody (Clone: GAD1/2391)	GAD1/2391	Mouse IgG1, kappa	ELISA, WB, IHC	Human
36-2360	Anti-GAD1 / GAD67 (GABAergic Neuronal Marker) Monoclonal Antibody (Clone: GAD1/2563)	GAD1/2563	Mouse IgG2b, kappa	ELISA, FACS, WB	Human
36-2361	Anti-GAD2 / GAD65 (GABAergic Neuronal Marker) Monoclonal Antibody (Clone: GAD2/1960)	GAD2/1960	Mouse IgG2b, kappa	IHC	Human
36-2362	Anti-GAD2 / GAD65 (GABAergic Neuronal Marker) Monoclonal Antibody (Clone: GAD2/2362)	GAD2/2362	Mouse IgG2b, kappa	IHC	Human
36-2379	Anti-GFAP (Astrocyte & Neural Stem Cell Marker) Monoclonal Antibody (Clone: GA-5)	GA-5	Mouse IgG1, kappa	FACS, IF, WB, IHC	Human, Mouse, Rat
36-2380	Anti-GFAP (Astrocyte & Neural Stem Cell Marker) Monoclonal Antibody (Clone: GFAP/2076)	GFAP/2076	Mouse IgG1, kappa	WB, IHC	Human
36-2436	Anti-Glutathione S-Transferase Mu3 (GSTM3) Monoclonal Antibody (Clone: CPTC-GSTMu3-1)	CPTC-GSTMu3-1	Mouse IgG2a, kappa	IHC	Human
36-2468	Anti-Heregulin-1 / Neuregulin-1 (Breast and Urothelial Marker) Monoclonal Antibody (Clone: NRG1/2710)	NRG1/2710	Mouse IgG1, kappa	IHC	Human

Cat. No.	Product Name	Clone	Isotype	Application	Reactivity
36-2469	Anti-Heregulin-1 / Neuregulin-1 (Breast and Urothelial Marker) Monoclonal Antibody (Clone: NRG1/2752)	NRG1/2752	Mouse IgG	ELISA, IF	Human
36-2605	Anti-CD11b / MAC-1 (Microglial Marker) Monoclonal Antibody (Clone: ITGAM/3340)	ITGAM/3340	Mouse IgG2a, kappa	WB, IHC	Human
36-2606	Anti-CD11b / MAC-1 (Microglial Marker) Monoclonal Antibody (Clone: ITGAM/271)	ITGAM/271	Mouse IgG1, kappa	FACS, IF	Human
36-2607	Anti-CD11b / MAC-1 (Microglial Marker) Monoclonal Antibody (Clone: ITGAM/3337)	ITGAM/3337	Mouse IgG2b, kappa	IHC	Human
36-2608	Anti-CD11b / MAC-1 (Microglial Marker) Monoclonal Antibody (Clone: ITGAM/3338)	ITGAM/3338	Mouse IgG1, kappa	WB, IHC	Human
36-2609	Anti-CD11b / MAC-1 (Microglial Marker) Monoclonal Antibody (Clone: ITGAM/3339)	ITGAM/3339	Mouse IgG1, kappa	IHC	Human
36-2839	Anti-CD56 / NCAM1 / NKH1 (Neuronal Cell Marker) Monoclonal Antibody (Clone: 123C3.D5)	123C3.D5	Mouse IgG1, kappa	FACS, IF, IHC	Human
36-2840	Anti-CD56 / NCAM1 / NKH1 (Neuronal Cell Marker) Monoclonal Antibody (Clone: ERIC-1)	ERIC-1	Mouse IgG1, kappa	IHC	Human
36-2841	Anti-CD56 / NCAM1 / NKH1 (Neuronal Cell Marker) Monoclonal Antibody (Clone: NCAM1/2217R)	NCAM1/2217R	Rabbit IgG	FACS, IHC	Human
36-2846	Anti-NGF-Receptor (p75) / CD271 (Soft Tissue Tumor Marker) Monoclonal Antibody (Clone: rNGFR/1965)	rNGFR/1965	Mouse IgG1, kappa	WB, IHC	Human
36-2844	Anti-Neurofilament (NF-H) (Neuronal Marker) Monoclonal Antibody (Clone: NEFL.H/2324R)	NEFL.H/2324R	Rabbit IgG	WB, FACS, IHC	Human, Mouse, Rat
36-2847	Anti-NGF-Receptor (p75) / CD271 (Soft Tissue Tumor Marker) Monoclonal Antibody (Clone: NGFR/1964)	NGFR/1964	Mouse IgG2b, kappa	IHC	Human
36-2849	Anti-NGF-Receptor (p75) / CD271 (Soft Tissue Tumor Marker) Monoclonal Antibody (Clone: NGFR/2550R)	NGFR/2550R	Rabbit IgG	WB, IHC	Human
36-3128	Anti-S100B (Astrocyte and Melanoma Marker) Monoclonal Antibody (Clone: 4C4.9)	4C4.9	Mouse IgG2a, kappa	IHC, FACS, WB, IF	Human
36-3129	Anti-S100B (Astrocyte and Melanoma Marker) Monoclonal Antibody (Clone: SPM354)	SPM354	Mouse IgG2a, kappa	IHC, FACS, WB, IF	Human
36-3130	Anti-S100B (Astrocyte and Melanoma Marker) Monoclonal Antibody (Clone: S100B/1012)-CF488	S100B/1012	Mouse IgG2a, kappa	FACS, IF	Human
36-3131	Anti-S100B (Astrocyte and Melanoma Marker) Monoclonal Antibody (Clone: S100B/1012)	S100B/1012	Mouse IgG2a, kappa	IHC, FACS, WB, IF	Human
36-3132	Anti-S100B (Astrocyte and Melanoma Marker) Monoclonal Antibody (Clone: 4C4.9 + S100B/1012)	4C4.9 + S100B/1012	Mouse IgG2a, kappa + Mouse IgG2a, kappa	IHC, FACS, WB, IF	Human
36-3134	Anti-S100B (Astrocyte and Melanoma Marker) Monoclonal Antibody (Clone: S100B/1706R)	S100B/1706R	Rabbit IgG, kappa	IHC, WB	Human
36-3135	Anti-S100B (Astrocyte and Melanoma Marker) Polyclonal Antibody		Rabbit IgG	IHC	Human
36-3166	Anti-SOX2 (Embryonic Stem Cell Marker) Monoclonal Antibody (Clone: SOX2/1791)	SOX2/1791	Mouse IgG2b, kappa	ELISA, WB, IHC	Human, Mouse
36-3167	Anti-SOX2 (Embryonic Stem Cell Marker) Monoclonal Antibody (Clone: SOX2/1792)	SOX2/1792	Mouse IgG2b, kappa	ELISA, WB, IHC	Human, Mouse
36-3168	Anti-SOX2 (Embryonic Stem Cell Marker) Monoclonal Antibody (Clone: rSOX2/1791)	rSOX2/1791	Mouse IgG1, kappa	IHC	Human
36-3169	Anti-SOX2 (Embryonic Stem Cell Marker) Monoclonal Antibody (Clone: rSOX2/1792)	rSOX2/1792	Mouse IgG1, kappa	ELISA, IHC	Human, Mouse
36-3170	Anti-SOX2 (Embryonic Stem Cell Marker) Monoclonal Antibody (Clone: SOX2/3169R)	SOX2/3169R	Rabbit IgG	ELISA, WB, IHC	Human, Mouse
36-3171	Anti-SOX2 (Embryonic Stem Cell Marker) Monoclonal Antibody (Clone: SOX2/3811R)	SOX2/3811R	Rabbit IgG	ELISA, WB, IHC	Human, Mouse
36-3196	Anti-Fodrin / Alpha Spectrin II (SPTAN1) / NEAS Monoclonal Antibody (Clone: SPTAN1/3351)	SPTAN1/3351	Mouse IgG2b, kappa	IHC	Human
36-3197	Anti-Fodrin / Alpha Spectrin II (SPTAN1) / NEAS Monoclonal Antibody (Clone: SPTAN1/3352)	SPTAN1/3352	Mouse IgG2c, kappa	IHC	Human
36-3223	Anti-CD147 / EMMPRIN / Neurothelin Monoclonal Antibody (Clone: CB43)	CB43	Mouse IgM, kappa	FACS, IF	Human
36-3224	Anti-Synaptophysin (Neuroendocrine Marker) Monoclonal Antibody (Clone: SYP/3551)	SYP/3551	Mouse IgG1, kappa	IHC	Human
36-3363	Anti-Vimentin (Mesenchymal Cell Marker) Monoclonal Antibody (Clone: VM452)-CF488	VM452	Mouse IgG1, kappa	FACS, IF	Human
36-3364	Anti-Vimentin (Mesenchymal Cell Marker) Monoclonal Antibody (Clone: V9)	V9	Mouse IgG1, kappa	FACS, IF, WB, IHC	Human
36-3365	Anti-Vimentin (Mesenchymal Cell Marker) Monoclonal Antibody (Clone: VIM/3736)	VIM/3736	Mouse IgG2b, kappa	WB, IHC	Human

Cat. No.	Product Name	Clone	Isotype	Application	Reactivity
36-3366	Anti-Vimentin (Mesenchymal Cell Marker) Monoclonal Antibody (Clone: VIM/1937R)	VIM/1937R	Rabbit IgG	FACS, IF, WB, IHC	Human
36-3391	Anti-Calbindin 1 (CALB1) Monoclonal Antibody (Clone: CALB1/2364)	CALB1/2364	Mouse IgG1, kappa	ELISA	Human
36-3392	Anti-Calbindin 1 (CALB1) Monoclonal Antibody (Clone: CALB1/2782)	CALB1/2782	Mouse IgG2b, kappa	ELISA, IHC	Human
36-3393	Anti-Calbindin 1 (CALB1) Monoclonal Antibody (Clone: CALB1/3333)	CALB1/3333	Mouse IgG2b, kappa	ELISA, IHC	Human
36-3612	Anti-CD44v3 (Marker of Tumor Metastasis) Monoclonal Antibody (Clone: 2F10)	2F10	Mouse IgG1, kappa	FACS, IF, WB, IHC	Human
36-3616	Anti-CD44v6 (Marker of Tumor Metastasis) Monoclonal Antibody (Clone: CD44V6/2496)	CD44V6/2496	Mouse IgG1, kappa	IHC	Human
36-3617	Anti-CD44 / HCAM Std. Monoclonal Antibody (Clone: BU75)	BU75	Mouse IgG2a, kappa	FACS, IF, Functional Assay, WB, IHC	Human
36-3618	Anti-CD44v4/5 (Marker of Tumor Metastasis) Monoclonal Antibody (Clone: 3D2)	3D2	Mouse IgG1, kappa	FACS, WB, IHC	Human
36-3619	Anti-CD44 / HCAM Std. (Cancer Stem Cell Marker) Monoclonal Antibody (Clone: rHCAM/918)	rHCAM/918	Mouse IgG1, kappa	Functional Assay, FACS, IF, WB, IHC	Human
36-3620	Anti-CD44v4 (Marker of Tumor Metastasis) Monoclonal Antibody (Clone: CD44v4/1219)	CD44v4/1219	Mouse IgG2a, kappa	IHC	Human
36-3621	Anti-CD44v6 (Marker of Tumor Metastasis) Monoclonal Antibody (Clone: CD44v6/1246)	CD44v6/1246	Mouse IgG2a, kappa	IHC	Human
36-3622	Anti-CD44v9 (Marker of Tumor Metastasis) Monoclonal Antibody (Clone: CD44v9/1459)	CD44v9/1459	Mouse IgG1, kappa	IHC	Human
36-3623	Anti-CD44v4 (Marker of Tumor Metastasis) Monoclonal Antibody (Clone: CD44v4/1700R)	CD44v4/1700R	Rabbit IgG	IHC	Human
36-3624	Anti-CD44 / HCAM Std. Monoclonal Antibody (Clone: HCAM/2875R)	HCAM/2875R	Rabbit IgG	WB, IHC	Human
36-3626	Anti-CD44v4 (Marker of Tumor Metastasis) Polyclonal Antibody		Rabbit IgG	IHC	Human
36-3643	Anti-CD68 (Macrophage Marker) Monoclonal Antibody (Clone: rLAMP4/824)	rLAMP4/824	Mouse IgG1, kappa	FACS, IF, WB, IHC	Human
36-3644	Anti-CD68 (Macrophage Marker) Monoclonal Antibody (Clone: LAMP4/1830)	LAMP4/1830	Mouse IgG2b, kappa	FACS, ELISA, IHC	Human
36-3676	Anti-E-Cadherin (CDH1) / CD324 (Intercellular Junction Marker) Monoclonal Antibody (Clone: CDH1/3256)	CDH1/3256	Mouse IgG1, kappa	FACS, IHC	Human
36-3677	Anti-E-Cadherin (CDH1) / CD324 (Intercellular Junction Marker) Monoclonal Antibody (Clone: 4A2)	4A2	Mouse IgG1, kappa	FACS, IF, WB, IHC	Human
36-3678	Anti-E-Cadherin (CDH1) / CD324 (Intercellular Junction Marker) Monoclonal Antibody (Clone: CDH1/1525)	CDH1/1525	Mouse IgG1, kappa	FACS, IF, WB, IHC	Human
36-3679	Anti-E-Cadherin / CD324 (Intercellular Junction Marker) Monoclonal Antibody (Clone: SPM381)	SPM381	Mouse IgG1, kappa	FACS, IF, WB, IHC	Human
36-3680	Anti-E-Cadherin / CD324 (Intercellular Junction Marker) Monoclonal Antibody (Clone: SPM471)	SPM471	Mouse IgG1, kappa	FACS, IF, WB, IHC	Human
36-3745	Anti-Neurofilament (H+L) (Neuronal Marker) Monoclonal Antibody (Clone: 2F11)	2F11	Mouse IgG1, kappa	WB, IHC	Human, Mouse, Rat
39-1006	Anti-Calbindin-D Monoclonal Antibody (Clone: CB-955)	CB-955	Mouse IgG1	WB, IHC-P	Human
39-1037	Anti-GAP43 Monoclonal Antibody (Clone: GAP-7B10)	GAP-7B10	Mouse IgG2a	WB, IHC-P, IHC-F	Human
39-1039	Anti-GFAP Monoclonal Antibody (Clone: G-A-5)	G-A-5	Mouse IgG1	WB, IHC-P, IHC-F	Human
39-1048	Anti-MAP2 Monoclonal Antibody (Clone: HM-2)	HM-2	Mouse IgG1	WB, IHC-P	Human
39-1052	Anti-Vimentin Monoclonal Antibody (Clone: V9)	V9	Mouse IgG1	WB, IHC-P	Human
39-1057	Anti-alpha-Tubulin Monoclonal Antibody (Clone: DM1A)	DM1A	Mouse IgG1	WB, IHC-P	Human
39-1060	Anti-beta-Tubulin Monoclonal Antibody (Clone: TUB 2.1)	TUB 2.1	Mouse IgG1	WB, IHC-P	Human
39-1076	Anti-NF200 Monoclonal Antibody (Clone: N52)	N52	Mouse IgG1	WB, IHC-P, IHC-F	Human
39-1077	Anti-Nitric Oxide Synthase, Brain(1-181) NOS1 Monoclonal Antibody (Clone: NOS-B1)	NOS-B1	Mouse IgG1	WB	Human
39-1091	Anti-Synaptophysin Monoclonal Antibody (Clone: SVP-38)	SVP-38	Mouse IgG1	WB, IHC-P, IHC-F	Human

Cat. No.	Product Name	Clone	Isotype	Application	Reactivity
39-1093	Anti-Tau Monoclonal Antibody (Clone: TAU-2)	TAU-2	Mouse IgG1	WB, IHC-P	Human
39-2028	Anti-BDNF Polyclonal Antibody		Rabbit IgG	WB	Human, Mouse, Rat
39-2047	Anti-GAD67 Polyclonal Antibody		Rabbit IgG	WB	Human
39-2054	Anti-NMDAR2A Polyclonal Antibody		Rabbit IgG	WB	Human
39-2104	Anti-Muscarinic Acetylcholine Receptor 2 Polyclonal Antibody		Rabbit IgG	WB	Human
39-2157	Anti-CNTF Polyclonal Antibody		Rabbit IgG	WB, IHC-P	Human
44-1121	Anti-GLUT1 Monoclonal Antibody (Clone: IHC404)	IHC404		IHC	Human
44-1122	Anti-GLUT1 Monoclonal Antibody (Clone: IHC404)- Ready to Use	IHC404		IHC	Human
44-1185	Anti-Vimentin Monoclonal Antibody (Clone: IHC684)	IHC684		IHC	Human

Kits and Reagents

Cat. No.	Product Name	Category
17-1101	Leeperter™ Renilla Luciferase Assay Reagent- 1000 Test	Assay Reagent
90-2109	Human OPN (Osteopontin) Pre-Coated ELISA Kit	ELISA
90-2138	Human VEGF (Vascular Endothelial Cell Growth Factor) Pre-Coated ELISA Kit	ELISA
90-2139	Human VEGF-C (Vascular Endothelial Cell Growth Factor-C) Pre-Coated ELISA Kit	ELISA
90-2165	Human APOE (Apolipoprotein E) Pre-Coated ELISA Kit	ELISA
90-2194	Human FLT4/VEGFR3 (Fms-related tyrosine kinase 4) Pre-Coated ELISA Kit	ELISA

Reporter/Stable Cell Lines

Cat. No.	Product Name	Host	Luciferase	Type
14-115ACL	iNOS Leeperter™ Luciferase Reporter-RAW264.7 Cell Line	RAW264.7	Renilla	Reporter
14-117ACL	Nrf2 Leeperter™ Luciferase Reporter-MCF7 Cell Line	MCF7	Renilla	Reporter
14-515ACL	VEGFR2 Stable Cell Line-H	HEK293		Stable
14-109ACL	GATA3 Leeperter™ Luciferase Reporter-HEK293 Cell Line	HEK293	Renilla	Reporter
14-144ACL	FOXP3 Leeperter™ Luciferase Reporter-Jurkat Cell Line	Jurkat T	Renilla	Reporter

Recombinant Proteins

Cat. No.	Product Name
32-10118	Recombinant Human Tubulin beta-2A chain
32-10136	Recombinant Human Tubulin beta-2B chain
32-10166	Recombinant Human Tau protein
32-10177	Recombinant Human Tau Protein (Mammalian expressed, N-His)
32-1025	AIF1 Recombinant Protein
32-1047	Clusterin Recombinant Protein
32-1048	Clusterin Native Protein
32-1049	Clusterin His Recombinant Protein
32-1051	k9Clusterin Recombinant Protein
32-1052	k9Clusterin HEK Recombinant Protein

Cat. No.	Product Name
32-10675	Recombinant Human Drebrin/DBN1(C-His)
32-1072	BDNF Recombinant Protein
32-10779	Recombinant Human Tubulin gamma-1 chain(C-His)
32-10811	Recombinant Mouse CD45 (C-His)
32-1092	b NGF Recombinant Protein
32-1093	b NGF CHO Recombinant Protein
32-1094	b NGF HEK Recombinant Protein
32-1095	mb NGF Recombinant Protein
32-1096	Mouse NGF beta Native Protein
32-1097	ProNGF Recombinant Protein
32-1106	CDNF Recombinant Protein
32-1107	mCDNF Recombinant Protein
32-1108	rCDNF Recombinant Protein
32-1110	CNTF Recombinant Protein
32-1111	CNTF His Recombinant Protein
32-1112	mCNTF Recombinant Protein
32-1113	rCNTF Recombinant Protein
32-11129	Recombinant Mouse TrkB (C-6His)
32-11159	Recombinant Mouse CD45 (C-6His)
32-11172	Recombinant Human CD68 (C-Fc)
32-11175	Recombinant Human CD147 (C-Fc)
32-11179	Recombinant Human CD147 (C-mFc)
32-11185	Recombinant Human CD45RA (C-6His)
32-11186	Recombinant Human CD45R0 (C-6His)
32-11203	Recombinant Human CD45/PTPRC (C-6His)
32-11281	Recombinant Human Cadherin-1/E-Cadherin/CDH1 (C-6His)
32-11330	Recombinant Mouse Notch 1 (C-6His)
32-12013	Human Brain Derived Neurotrophic Factor
32-12015	Human Beta-Nerve Growth Factor
32-12016	Human Beta-Nerve Growth Factor (AF)
32-12017	Mouse Beta-Nerve Growth Factor
32-12018	Mouse Beta-Nerve Growth Factor (AF)
32-12025	Human Ciliary Neurotrophic Factor
32-12090	Human Glial Derived Neurotrophic Factor
32-12091	Human Glial Derived Neurotrophic Factor (AF)
32-12092	Mouse Glial Derived Neurotrophic Factor
32-12093	Mouse Glial Derived Neurotrophic Factor (AF)
32-12094	Rat Glial Derived Neurotrophic Factor
32-12095	Rat Glial Derived Neurotrophic Factor (AF)
32-12026	Human Ciliary Neurotrophic Factor (AF)
32-12260	Human Neuregulin 1-beta

Cat. No.	Product Name
32-12261	Human Neuregulin 1-beta (AF)
32-12263	Mouse Neurotrophin-3
32-1237	GDNF Recombinant Protein
32-1238	mGDNF Recombinant Protein
32-1239	rGDNF Recombinant Protein
32-1240	GFRA3 Recombinant Protein
32-1241	GDF3 Recombinant Protein
32-1242	GDF5 Recombinant Protein
32-1243	GDF5 His Recombinant Protein
32-1244	mGDF5 Recombinant Protein
32-1245	GDF10 Recombinant Protein
32-1246	GDF11 Recombinant Protein
32-1247	GDF15 His Recombinant Protein
32-1248	GDF15 D Recombinant Protein
32-1249	GDF15 Recombinant Protein
32-13089	CD44 Human
32-13114	CD68 Human, sf9
32-13395	S100b Human
32-13396	S100b Mouse
32-13643	CNTF Rat, His
32-13785	NCAM1 Human
32-1610	Myostatin Recombinant Protein
32-1611	Myostatin His Recombinant Protein
32-1612	Myostatin HEK Recombinant Protein
32-1613	Myostatin Propetide Recombinant Protein
32-1620	NRG1 Recombinant Protein
32-1621	NRG1 B1 Recombinant Protein
32-1622	NRG1 A Recombinant Protein
32-1623	NRG4 Recombinant Protein
32-1627	NT 3 Recombinant Protein
32-1629	mNT 3 Recombinant Protein
32-1630	NT 4 Recombinant Protein
32-1666	PEDF Recombinant Protein
32-1667	PEDF His Recombinant Protein
32-1668	PEDF HEK Recombinant Protein
32-17015	Recombinant human CD40 protein with C-terminal mouse Fc and 6xHis tag
32-17133	Recombinant Human CD44 Protein with C-terminal 6xHis tag
32-17140	Recombinant Human CSPG4 Protein with C-terminal 6xHis tag.
32-17172	Recombinant human CD147 protein with C-terminal human Fc tag
32-17230	Recombinant human GDNF protein with C-terminal human Fc tag

Cat. No.	Product Name
32-17612	Recombinant Human CD56 Protein, His Tag
32-17614	Recombinant Human CD56 Protein, hFc Tag
32-17638	Recombinant Human NTRK1 Protein, hFc Tag
32-17664	Recombinant Human CD68 Protein, His Tag
32-17858	Recombinant Human PRNP Protein, hFc Tag
32-17859	Recombinant Human PRNP (90-230) Protein, hFc Tag
32-17909	Recombinant Mouse CD40 Protein, hFc Tag
32-17945	Recombinant Human NTS Protein, hFc Tag
32-17991	Recombinant Human PYY Protein, hFc Tag
32-18041	Recombinant Human/Mouse/Rat GDF-8 Protein
32-18051	Recombinant Human GDF-5 Protein
32-18070	Recombinant Human pro-BDNF Protein
32-18071	Recombinant Human pro-Beta NGF Protein
32-18095	Recombinant Human CNTF Protein
32-18257	Human CD45 Protein, His Tag
32-18315	Human NTRK2 Protein, His Tag
32-18364	Human CSPG4 (1538-2221) Protein, mFc Tag
32-18368	Human CSPG4 (1538-2221) Protein, hFc Tag
32-18418	Human PEDF Protein, His Tag
32-18419	Human MAPT Protein, His Tag
32-18432	Human NPY Protein, hFc Tag
32-18525	Mouse CD45 Protein, His Tag
32-2307	ENO2 Native Protein
32-2342	GAD1 Recombinant Protein
32-2343	GAD1 iso1 Recombinant Protein
32-2410	GSTM3 Recombinant Protein
32-3216	APP Recombinant Protein
32-3342	Bovine NEFM Native Protein
32-3360	Bovine Vimentin Native Protein
32-3396	Cadherin-E Recombinant Protein
32-3398	CALB1 Recombinant Protein
32-3399	CALB2 Recombinant Protein
32-3400	mCALB2 Recombinant Protein
32-3472	CD40 Recombinant Protein
32-3477	CD68 Recombinant Protein
32-3478	CD68, 38 kda Recombinant Protein
32-3537	CHRNA6 Recombinant Protein
32-3864	GAP43 Recombinant Protein
32-4172	Recombinant Human Microtubule-Associated Protein Tau
32-4173	Recombinant Human Microtubule-Associated Protein Tau 381 a.a.

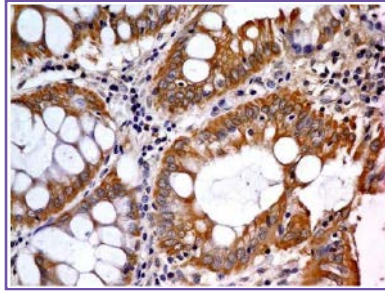
Cat. No.	Product Name
32-4174	Recombinant Human Microtubule-Associated Protein Tau 383 a.a.
32-4350	Recombinant Human Neurotensin
32-4487	Recombinant Human POU Class 5 Homeobox 1
32-4488	Recombinant Human POU Class 5 Homeobox 1 Polyarginine-Tag
32-4497	Recombinant Human Prion Protein 2
32-4498	Recombinant Human Prion Protein
32-4605	Recombinant Mouse Receptor-Associated Protein Of The Synapse
32-4621	Recombinant Rat Calbindin-1
32-4814	Recombinant Human Serpin Peptidase Inhibitor, Clade B Member 2, His Tag
32-4822	Recombinant Human Serpin Peptidase Inhibitor, Clade I Member 1
32-4823	Recombinant Human Serpin Peptidase Inhibitor, Clade I Member 1, His Tag
32-4878	Recombinant Human Alpha-Synuclein
32-4879	Recombinant Human Alpha-Synuclein 1-60
32-4880	Recombinant Human Alpha-Synuclein 61-140
32-4881	Recombinant Human Alpha-Synuclein 96-140
32-4882	Recombinant Human Alpha-Synuclein A30P
32-4883	Recombinant Human Alpha-Synuclein A30P/A53T
32-4887	Recombinant Mouse Alpha-Synuclein
32-4925	Recombinant Human SRY (sex determining region Y)-box 2
32-4926	Recombinant Human SRY (sex determining region Y)-box 2 Polyarginine-Tag
32-4927	Recombinant Human SRY (sex determining region Y)-box 2 TAT
32-5017	Recombinant Human Synaptotagmin I
32-5018	Recombinant Human Synaptotagmin III
32-5019	Recombinant Human Synaptotagmin IV
32-5020	Recombinant Human Synaptotagmin V
32-5021	Recombinant Human Synaptotagmin XIII
32-5038	Recombinant Human Tubulin Folding Cofactor A
32-5039	Recombinant Human Tubulin Folding Cofactor B
32-5041	Recombinant Human Tubulin Folding Cofactor C
32-5108	Recombinant Human Tubulin Polyglutamylase Complex Subunit 2
32-5114	Recombinant Human Tubulin Polymerization-Promoting Protein Family Member 3
32-5155	Recombinant Human Tubulin, Beta 3 Class III
32-5156	Recombinant Human Tubulin Gamma 1
32-5226	Recombinant Human Vimentin
32-6304	Clusterin Human, Serum
32-6305	Clusterin Mouse
32-6307	BDNF Human, His
32-6308	BDNF Human, HEK
32-6318	CNTF Human, His Active
32-6366	GDNF Human, Sf9

Cat. No.	Product Name
32-6599	WNT3A Human
32-6751	GAD2 Human
32-7050	Recombinant Human beta-Nerve Growth Factor/ beta-NGF (Ser122-Ala241, E. coli)
32-7065	Recombinant Human Brain-Derived Neurotrophic Factor/BDNF
32-7067	Recombinant Human pro-Nerve Growth Factor/pro-NGF (Glu19-Ala241)
32-7083	Recombinant Human Ciliary Neurotrophic Factor/CNTF
32-7204	Recombinant Human Glial Cell Line-Derived Neurotrophic Factor/GDNF
32-7387	Recombinant Human EMMPRIN/Basigin/CD147 (C-6His)
32-7408	Recombinant Human Clusterin/ApoJ (C-6His)
32-7425	Recombinant Human GDNF Family Receptor a-1/GFRA1 (C-6His)
32-7426	Recombinant Human GDNF Receptor a-2/GFRA2 (C-6His)
32-7489	Recombinant Human Serpin F1/PEDF(C-6His)
32-7609	Recombinant Human Pro-Neuregulin-1/NRG1- beta 1/HRG1- beta 1 (Ser2-Lys246)
32-7648	Recombinant Mouse beta-Nerve Growth Factor/ beta-NGF (Met130-Arg239)
32-7654	Recombinant Human Growth Dfferentiation Factor 11/GDF-11/BMP-11
32-7707	Recombinant Human Pro-Neuropeptide Y/NPY (C-6His)
32-7781	Recombinant Human Clusterin-Like Protein 1/CLUL1 (C-6His)
32-8229	Recombinant Human Tubulin beta-4A Chain/TUBB4A (N-6His)
32-8270	Recombinant Mouse Pigment Epithelium-Derived Factor/PEDF/SERPIN F1
32-8397	Recombinant Mouse Clusterin/APOJ (C-6His)
32-8413	Recombinant Human Neuronal Acetylcholine Receptor Subunit beta-3/CHRN3 (C-6His)
32-8431	Recombinant Human beta-Nerve Growth Factor/ beta-NGF (Ser122-Arg239, Human Cells)
32-8507	Recombinant Human GDNF Receptor a-2/GFRA2 (C-Fc-6His)
32-8808	Recombinant Human Neural Cell Adhesion Molecule 1/NCAM-1/CD56 (C-6His)
32-8838	Recombinant Mouse Basigin/CD147 (C-6His)
32-8886	Recombinant Human GDF-5/BMP-14
32-9101	Recombinant Human CD44 (C-hFc)
32-9105	Recombinant Human Ciliary Neurotrophic Factor/CNTF
32-9120	Recombinant Human Cadherin-1/E-cadherin/CDH1 (C-His)
32-9121	Biotinylated Recombinant Human Cadherin-1/E-cadherin/CDH1 (C-His)
32-9127	Recombinant Human Alpha-Synuclein/SNCA
32-9285	Recombinant Human CD44/MIC4 (C-6His)
32-9420	Recombinant Human Allograft Inflammatory Factor 1/AIF1 (C-6His)
32-9651	Recombinant Human Cerebral Dopamine Neurotrophic Factor/CDNF/ARMETL1 (C-6His)
32-9663	Recombinant Human CD44/MIC4 (C-Fc)
32-9682	Recombinant Human Clusterin/ApoJ (C-Fc-6His)
32-9701	Recombinant Human GDNF Family Receptor alpha-1/GFRA1 (C-Fc)
32-9840	Recombinant Human CD68 (C-hFc)
32-4396	Recombinant Human Parkinson Disease Protein 2

Biosimilar

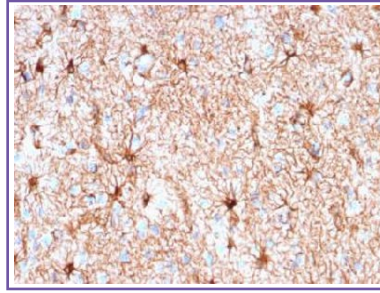
Cat. No.	Product Name	Isotype	Application	Reactivity
12-8107	Anti-Human VEGF (Bevacizumab)	Human IgG1k	IP, ELISA, FACS, WB	Human
12-8108	Anti-Human VEGF (Bevacizumab) – Biotin	Human IgG1k	ELISA	Human
12-8109	Anti-Human VEGF (Bevacizumab) – HRP	Human IgG1k	ELISA	Human
12-8110	Anti-Human VEGF (Bevacizumab) – Fc Muted™	Human IgG1k	WB, ELISA	Human
12-9080	Anti-CD40 Antibody (iscalimab biosimilar) (CFZ-533)	Human IgG1	ELISA	Human
12-9155	Anti-APP(aducanumab biosimilar) mAb	Human IgG1	FACS	Human
12-9190	Anti-CD56(lorvotuzumab biosimilar) mAb	Human IgG1	ELISA, FACS	Human
12-9386	Anti-CD45 (apamistamab biosimilar) mAb	Human IgG1	FACS	Human
12-9407	Recombinant anti-human-Amyloid Beta Antibody (Lecanemab Biosimilar)	Human IgG1	Functional Assay, ELISA, ICC/IF, FACS	Human

Monoclonal Antibody to Glut-1 (Clone: ABM4G40)



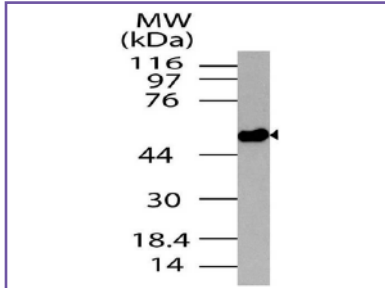
Product Code : 10-7548
Clone name : ABM4G40
Clonality : Monoclonal
Application : IHC, FACS, WB
Reactivity : Human

Anti-GFAP (Astrocyte & Neural Stem Cell Marker) Recombinant Mouse Monoclonal Antibody



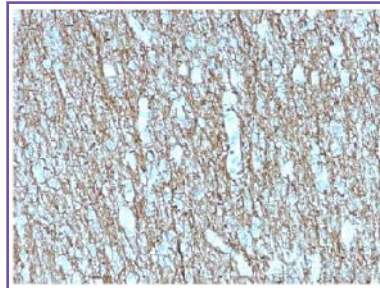
Product Code : 12-1184
Clone name : rASTRO/789
Clonality : Monoclonal
Application : FACS, WB, IHC
Reactivity : Human, Mouse, Rat

Polyclonal Antibody to Neurotensin receptor 2



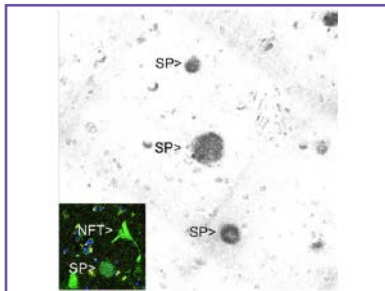
Product Code : 11-8006
Clonality : Polyclonal
Application : WB
Reactivity : Human

Anti-Neurofilament (NF-H) (Neuronal Marker) Recombinant Mouse Monoclonal Antibody



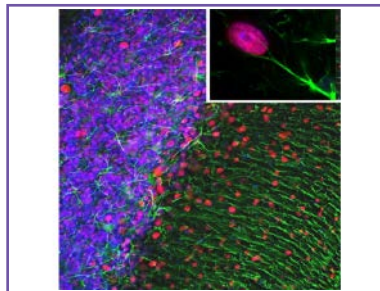
Product Code : 12-1223
Clone name : rNF421
Clonality : Monoclonal
Application : WB, FACS, IHC
Reactivity : Human, Mouse, Rat

Monoclonal Antibody to Amyloid-Beta



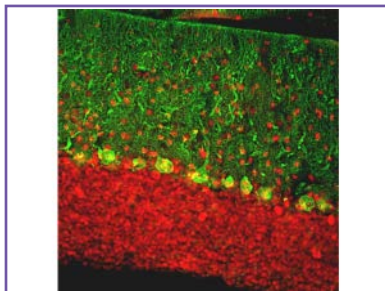
Product Code : 34-1009
Clone name : AB9
Clonality : Monoclonal
Application : WB, IF/ICC, IHC
Reactivity : Human

Polyclonal Antibody to Glial Fibrillary Acidic Protein, GFAP



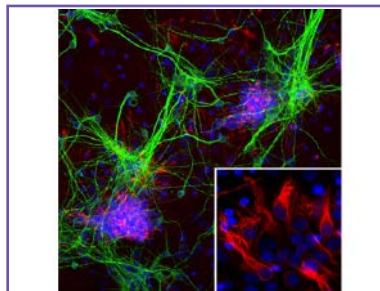
Product code : 34-1042
Clonality : Polyclonal
Application : WB, IF/ICC, IHC
Reactivity : Human, Rat, Mouse, Cow, Pig, Horse

Polyclonal Antibody to Calbindin



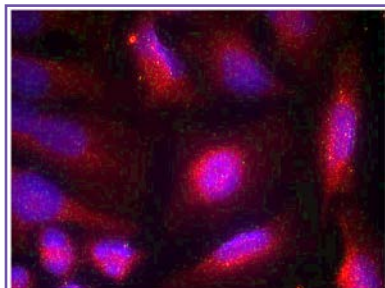
Product Code : 34-1020
Clonality : Polyclonal
Application : WB, IF/ICC, IHC
Reactivity : Human, Cow, Rat, Mouse

Monoclonal Antibody to Nestin



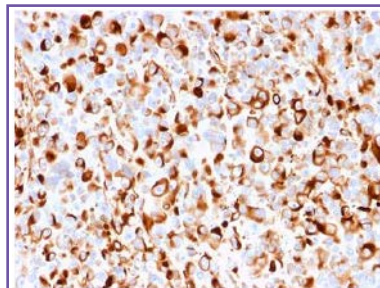
Product code : 34-1074
Clone name : 4D11
Clonality : Monoclonal
Application : WB, IF/ICC, IHC
Reactivity : Human, Rat, Mouse

Polyclonal Antibody to TrkA (Phospho-Ser791)



Product code: 35-1293
Clonality : Polyclonal
Application : WB, IF
Reactivity : Human, Mouse, Rat

Anti-NGF-Receptor (p75) / CD271 (Soft Tissue Tumor Marker) Monoclonal Antibody



Product code: 36-2846
Clone name : rNGFR/1965
Clonality : Monoclonal
Application : WB, IHC
Reactivity : Human

➤ ABOUT OUR COMPANY

Abeomics Inc. is founded by scientists for the scientists. Our immunologists, cell biologists and business professionals have contributed for over 25 years to the growth and success of global companies including BD Biosciences, eBioscience and IMGENEX Corporation. We bring our experiences to develop well-validated and specific antibodies by traditional hybridoma technology and by genetic engineering to produce recombinant mouse and rabbit monoclonal antibodies.

Our **areas of focus** are in research & development support, high throughput screening services, assay development, as well as small to large-scale manufacturing.

➤ PRODUCT CATEGORIES

- Cancer Markers
- Caspase Antibodies
- Apoptosis Detection Kits
- Cell Lines
- Histone Methylation Antibodies
- Caspase Inhibitors
- NF- κ B Antibodies
- Recombinant Proteins

Contact:

9853 Pacific Heights Blvd.
Suite D. San Diego, CA 92121 USA
Tel : 858-263-4982 | Fax : 858-247-7052
Email: support@abeomics.com
Web: www.abeomics.com