

36-1209: Polyclonal Antibody to Granzyme B (NK/T-Cell Lymphoma Marker)(Discontinued)

Clonality :	Polyclonal
Application :	IHC,FACS,WB,IF
Reactivity :	Human,
Gene :	GZMB
Gene ID :	3002
Uniprot ID :	P10144
Format :	Purified
Alternative Name :	GZMB,CGL1,CSPB,CTLA1,GRB
Isotype :	Rabbit IgG
Immunogen Information :	Recombinant fragment (115 Amino acid residues; aa 73-187) of human Granzyme B protein

Description

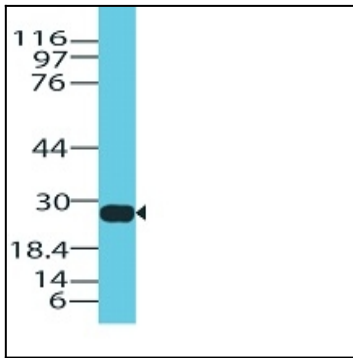
Granzyme B is a member of the granule serine protease family stored specifically in NK cells or cytotoxic T cells. Cytolytic T lymphocytes (CTL) and natural killer (NK) cells share the ability to recognize, bind, and lyse specific target cells. They are thought to protect their host by lysing cells bearing on their surface 'non-self' antigens, usually peptides or proteins resulting from infection by intracellular pathogens. Granzyme B is crucial for the rapid induction of target cell apoptosis by CTLs in the cell-mediated immune response. Granzyme B is useful as a marker in the identification of NK/T-cell lymphomas. High percentages of cytotoxic T-cells have been shown to be an unfavorable prognostic indicator in Hodgkin's Disease.

Product Info

Amount :	100 µg
Purification :	Affinity Chromatography
Content :	100 µg in 500 µl PBS containing 0.05% BSA and 0.05% sodium azide. Sodium azide is highly toxic.
Storage condition :	Store the antibody at 4°C; stable for 6 months. For long-term storage; store at -20°C. Avoid repeated freeze and thaw cycles.

Application Note

Flow Cytometry (0.5-1µg/million cells in 0.1ml); Immunofluorescence (0.5-1µg/ml); Western Blot (1-2µg/ml); Immunohistology (Formalin-fixed) (0.5-1µg/ml for 30 minutes at RT); (Staining of formalin-fixed tissues requires boiling tissue sections in 10mM Citrate buffer, pH 6.0, for 10-20 min followed by cooling at RT for 20 minutes); Optimal dilution for a specific application should be determined.



Western Blot Analysis of human Stomach Lysate using Granzyme B Polyclonal Antibody (Rabbit)