

## 10-4044: Monoclonal Antibody to IL-17RE (Clone: ABM2G70)

<b>Clonality :</b>	Monoclonal
<b>Clone Name :</b>	ABM2G70
<b>Application :</b>	FACS,WB
<b>Reactivity :</b>	Mouse,Human
<b>Gene :</b>	IL17RE
<b>Gene ID :</b>	132014
<b>Uniprot ID :</b>	Q8NFR9
<b>Format :</b>	Purified
<b>Alternative Name :</b>	IL17RE,UNQ3056/PRO9877
<b>Isotype :</b>	Mouse IgG2b Kappa
<b>Immunogen Information :</b>	A partial length recombinant human IL-17RE protein (amino acids 50-268) was used as the immunogen for this antibody.

### Description

IL-17RE (Interleukin 17 receptor E) is an orphan receptor of the IL-17 receptor family. The members of this receptor family play a critical role in inflammatory responses and contribute to the pathology of many autoimmune diseases. IL-17RE is a receptor specific to IL-17C preferentially expressed on tissue epithelial cells and regulates early innate immunity to intestinal pathogens by signaling to downstream components of the mitogen activated protein kinase (MAPK) pathway.

### Product Info

<b>Amount :</b>	25 µg / 100 µg
<b>Purification :</b>	Protein G Chromatography
<b>Content :</b>	25 µg in 50 µl/100 µg in 200 µl PBS containing 0.05% BSA and 0.05% sodium azide. Sodium azide is highly toxic.
<b>Storage condition :</b>	Store the antibody at 4°C, stable for 6 months. For long-term storage, store at -20°C. Avoid repeated freeze and thaw cycles.

### Application Note

Western blot analysis: 2-4 µg/ml, Flowcytometric analysis- 2-4 µg/10<sup>6</sup> Cells

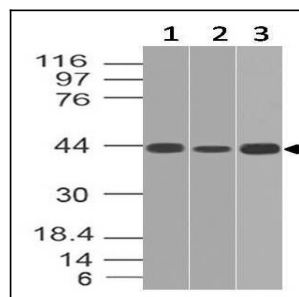


Figure-1: Western blot analysis of IL-17RE. Anti-IL-17RE antibody (Clone: ABM2G70) was tested at 2 µg/ml on (1) Jurkat, (2) PC3 and (3) NIH3T3 lysates.

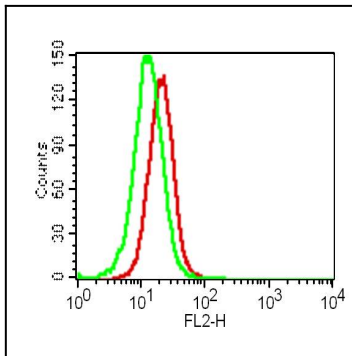


Figure-2: Intracellular flow cytometric analysis of IL-17RE in human PBMC (Macrophage) using 2  $\mu\text{g}/10^6$  cells of Anti-IL-17RE antibody (10-4044 Abeomics) . Green represent isotype control and red represent Anti-IL-17RE antibody (Clone:ABM2G70). Goat anti-mouse PE conjugated secondary antibody (ABEOMICS) was used.