

## 36-1169: Monoclonal Antibody to EMI1 (Early Mitotic Inhibitor-1)(Clone : EMI1/1176)

<b>Clonality :</b>	Monoclonal
<b>Clone Name :</b>	EMI1/1176
<b>Application :</b>	WB,IHC
<b>Reactivity :</b>	Human
<b>Gene :</b>	FBXO5
<b>Gene ID :</b>	26271
<b>Uniprot ID :</b>	Q9UKT4
<b>Format :</b>	Purified
<b>Alternative Name :</b>	FBXO5,EMI1,FBX5
<b>Isotype :</b>	Mouse IgG2a, kappa
<b>Immunogen Information :</b>	Recombinant fragment (203 amino acid residues between aa 1-250) of human EMI1 protein

### Description

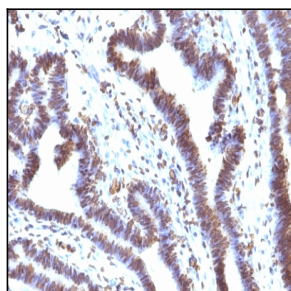
It recognizes a 56kDa protein, which is identified as Early Mitotic Inhibitor-1 (EMI1). It regulates mitosis by inhibiting the anaphase promoting complex/cyclosome (APC). Emi1 is a conserved F box protein containing a zinc-binding region essential for APC inhibition. The Emi1 protein functions to promote cyclin A accumulation and S phase entry in somatic cells by inhibiting the APC complex. At the G1-S transition, Emi1 is transcriptionally induced by the E2F transcription factor. Emi1 overexpression accelerates S-phase entry and can override a G1 block caused by overexpression of Cdh1 or the E2F-inhibitor p105 retinoblastoma protein (pRb). Depleting cells of Emi1 through RNA interference prevents accumulation of cyclin A and inhibits S phase entry.

### Product Info

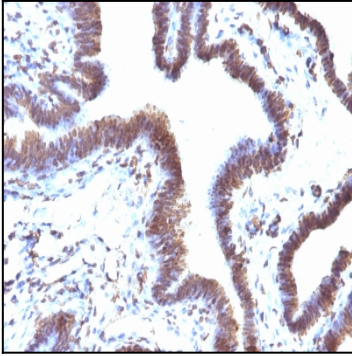
<b>Amount :</b>	100 µg
<b>Purification :</b>	Affinity Chromatography
<b>Content :</b>	100 µg in 500 µl PBS containing 0.05% BSA and 0.05% sodium azide. Sodium azide is highly toxic.
<b>Storage condition :</b>	Store the antibody at 4°C; stable for 6 months. For long-term storage; store at -20°C. Avoid repeated freeze and thaw cycles.

### Application Note

Western Blot (1-2ug/ml for 60 minutes at RT);Immunohistochemistry (Formalin-fixed) (1-2ug/ml for 30 minutes at RT)(Staining of formalin-fixed tissues requires heating tissue sections in 10mM Tris with 1mM EDTA, pH 9.0, for 45 min at 95&degC followed by cooling at RT for 20 minutes);



Formalin-fixed, paraffin-embedded human Ovarian Carcinoma stained with EMI1 Monoclonal Antibody (EMI1/1176).



Formalin-fixed, paraffin-embedded human Ovarian carcinoma stained with EMI1 Monoclonal Antibody (EMI1/1176).