

36-1167: Monoclonal Antibody to Ku (p70/p80) (Nuclear Marker)(Clone : KU729)

Clonality :	Monoclonal
Clone Name :	KU729
Application :	FACS,IF,ICC
Reactivity :	Human
Gene :	XRCC6
Gene ID :	2547
Uniprot ID :	P12956
Format :	Purified
Alternative Name :	XRCC6,G22P1
Isotype :	Mouse IgG1, kappa
Immunogen Information :	Nuclear extract of human HL-60 cells

Description

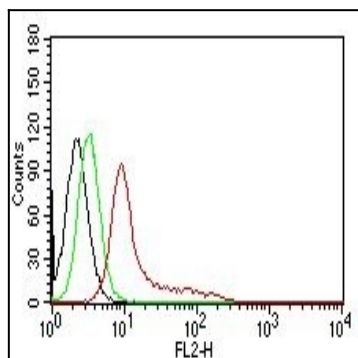
Recognizes a dimer of two proteins of 70kDa and ~80kDa, identified as two subunits of Ku. This MAb recognizes a conformational epitope of p70/p80 dimer, which is destroyed during Western blotting. The p70/p80 dimer is important for function of a 460kDa DNA-dependent protein kinase. Ku protein plays a role in cell signaling, proliferation, DNA repair, replication, transcriptional activation, and apoptosis.

Product Info

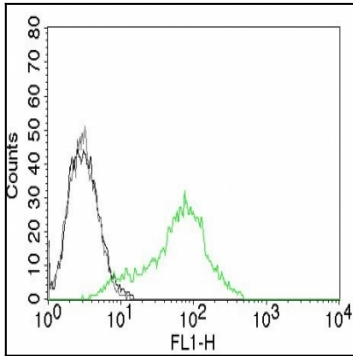
Amount :	100 µg
Purification :	Affinity Chromatography
Content :	100 µg in 500 µl PBS containing 0.05% BSA and 0.05% sodium azide. Sodium azide is highly toxic.
Storage condition :	Store the antibody at 4°C; stable for 6 months. For long-term storage; store at -20°C. Avoid repeated freeze and thaw cycles.

Application Note

Flow Cytometry (1-2ug/million cells); Immunofluorescence (1-2ug/ml); ,Immunocytochemistry (Acetone-fixed cells) (0.5-1.0ug/ml for 30 minutes at RT),



Flow Cytometry of human Ku (p70/p80) on K562 Cells. Black: Cells alone; Green: Isotype Control; Red: PE-labeled Ku Monoclonal Antibody (KU729).



Flow Cytometry of Human Ku (p70/p80) on 293T Cells. Black: Cells alone; Grey: Isotype Control; Green: AF488-labeled Ku Monoclonal Antibody (KU729).