

36-1158: Monoclonal Antibody to Alkaline Phosphatase (Placental) / PLAP (Germ Cell Tumor Marker)(Clone : PL8-F6)

| | |
|--------------------------------|-----------------------------|
| Clonality : | Monoclonal |
| Clone Name : | PL8-F6 |
| Application : | WB,FACS,IF,IHC |
| Reactivity : | Human |
| Gene : | ALPP |
| Gene ID : | 250 |
| Uniprot ID : | P05187 |
| Format : | Purified |
| Alternative Name : | ALPP,PLAP |
| Isotype : | Mouse IgG2b, kappa |
| Immunogen Information : | Purified human PLAP protein |

Description

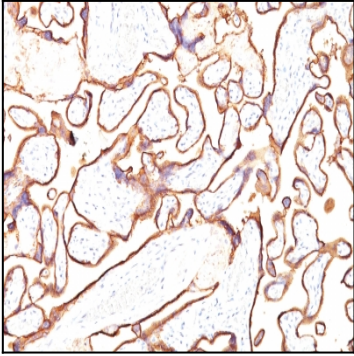
Reacts with a 70kDa membrane-bound isozyme (Regan and Nagao type) of Placental Alkaline Phosphatase (PLAP) occurring in the placenta during the 3rd trimester of gestation. It is highly specific for PLAP and shows no cross-reaction with other isozymes of alkaline phosphatase. Anti-PLAP reacts with germ cell tumors and can discriminate between these and other neoplasms. Somatic neoplasms e.g. breast, gastrointestinal, prostatic, and urinary cancers may also immunoreact with antibodies to PLAP. Anti-PLAP positivity in conjunction with anti-keratin negativity favors seminoma over carcinoma. Germ cell tumors are usually anti-keratin positive, but they regularly fail to stain with anti-EMA, whereas most carcinomas stain with anti-EMA. Anti-PLAP has been useful in the diagnosis of gestational trophoblastic disease.

Product Info

| | |
|----------------------------|---|
| Amount : | 100 µg |
| Purification : | Affinity Chromatography |
| Content : | 100 µg in 500 µl PBS containing 0.05% BSA and 0.05% sodium azide. Sodium azide is highly toxic. |
| Storage condition : | Store the antibody at 4°C; stable for 6 months. For long-term storage; store at -20°C. Avoid repeated freeze and thaw cycles. |

Application Note

Western Blot (1-2ug/ml); Flow Cytometry (1-2ug/million cells); Immunofluorescence (1-2ug/ml); Immunohistochemistry (Frozen & Formalin-fixed) (0.25-0.5ug/ml for 30 minutes at RT)(No special pretreatment is required for the immunohistochemical staining of formalin-fixed tissues.)



Formalin-fixed, paraffin-embedded human Placenta stained with PLAP Monoclonal Antibody (PL8-F6).