

36-1149: Monoclonal Antibody to FSH-beta (Follicle Stimulating Hormone-beta)(Clone : SPM107)

Clonality :	Monoclonal
Clone Name :	SPM107
Application :	FACS,IF,IHC
Reactivity :	Human
Gene :	FSHB
Gene ID :	2488
Uniprot ID :	P01225
Format :	Purified
Alternative Name :	FSHB
Isotype :	Mouse IgG1, kappa
Immunogen Information :	Full length purified Human FSH

Description

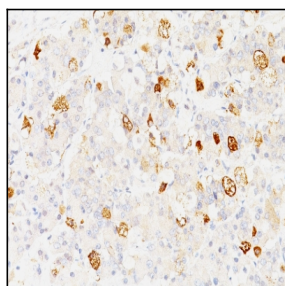
This MAb reacts with a protein of 22kDa, identified as beta sub-unit of FSH. It does not cross react with the alpha sub-unit. Follicle stimulating hormone (FSH) is a hormone synthesized and secreted by gonadotrophs in the anterior pituitary gland. In the ovary, FSH stimulates the growth of immature Graafian follicles to maturation. As the follicle grows, it releases inhibin, which deactivates the FSH production. In men, FSH enhances the production of androgen-binding protein by the Sertoli cells of the testis and is critical for spermatogenesis. FSH and LH act synergistically in reproduction. FSH is a useful marker in the classification of pituitary tumors and the study of pituitary disease.

Product Info

Amount :	100 µg
Purification :	Affinity Chromatography
Content :	100 µg in 500 µl PBS containing 0.05% BSA and 0.05% sodium azide. Sodium azide is highly toxic.
Storage condition :	Store the antibody at 4°C; stable for 6 months. For long-term storage; store at -20°C. Avoid repeated freeze and thaw cycles.

Application Note

Flow Cytometry (1-2ug/million cells); Immunofluorescence (1-2ug/ml); Immunohistochemistry (Formalin-fixed) (1-2ug/ml; 30 min RT) (Staining of formalin-fixed tissues requires heating tissue sections in 10mM Tris with 1mM EDTA, pH 9.0, for 45 min at 95°C followed by cooling at RT for 20 minutes);



Formalin-fixed, paraffin-embedded human Pituitary stained with FSH-beta Monoclonal Antibody (SPM107).