

36-1147: Monoclonal Antibody to TRIM29 (Lung Squamous Cell Carcinoma Marker)(Clone : TRIM29/1042)

Clonality :	Monoclonal
Clone Name :	TRIM29/1042
Application :	WB
Reactivity :	Human
Gene :	TRIM29
Gene ID :	23650
Uniprot ID :	Q14134
Format :	Purified
Alternative Name :	TRIM29,ATDC
Isotype :	Mouse IgG2b, kappa
Immunogen Information :	Recombinant fragment (126 Amino acid residues between aa 1-200) of human TRIM29 protein

Description

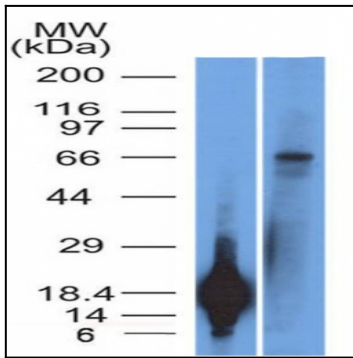
It recognizes a 66kDa protein, which is identified as Tripartite motif-containing protein 29 (TRIM29). It interacts with the intermediate filament protein vimentin, a substrate for the PKC family of protein kinases, and with hPKCI-1, an inhibitor of the PKCs. TRIM29 protein contains both zinc finger and leucine zipper motifs, suggesting that the it may form homodimers and possibly associate with DNA. High expression of TRIM29 has been reported in gastric cancer and pancreatic cancer, and correlates with enhanced tumor growth and lymph node metastasis. TRIM29 is also able to distinguish lung squamous cell carcinoma from lung adenocarcinoma with ~90% positive accuracy, when used in a panel with TTF-1, p63, CK5/6, and Napsin-A antibodies.

Product Info

Amount :	100 µg
Purification :	Affinity Chromatography
Content :	100 µg in 500 µl PBS containing 0.05% BSA and 0.05% sodium azide. Sodium azide is highly toxic.
Storage condition :	Store the antibody at 4°C; stable for 6 months. For long-term storage; store at -20°C. Avoid repeated freeze and thaw cycles.

Application Note

Western Blot (1-2ug/ml);



Western Blot of TRIM29 Recombinant protein fragment & A431 Cell Lysate TRIM29 Monoclonal Antibody (TRIM29/1042).