

## 36-1146: Monoclonal Antibody to TRIM29 (Lung Squamous Cell Carcinoma Marker)(Clone : TRIM29/1041)

<b>Clonality :</b>	Monoclonal
<b>Clone Name :</b>	TRIM29/1041
<b>Application :</b>	ELISA,IHC
<b>Reactivity :</b>	Human
<b>Gene :</b>	TRIM29
<b>Gene ID :</b>	23650
<b>Uniprot ID :</b>	Q14134
<b>Format :</b>	Purified
<b>Alternative Name :</b>	TRIM29,ATDC
<b>Isotype :</b>	Mouse IgG2a, kappa
<b>Immunogen Information :</b>	Recombinant fragment (126 Amino acid residues between aa 1-200) of human TRIM29 protein

### Description

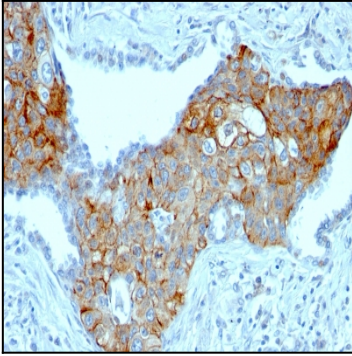
It recognizes a 66kDa protein, which is identified as Tripartite motif-containing protein 29 (TRIM29). It interacts with the intermediate filament protein vimentin, a substrate for the PKC family of protein kinases, and with hPKCI-1, an inhibitor of the PKCs. TRIM29 protein contains both zinc finger and leucine zipper motifs, suggesting that the it may form homodimers and possibly associate with DNA. High expression of TRIM29 has been reported in gastric cancer and pancreatic cancer, and correlates with enhanced tumor growth and lymph node metastasis. TRIM29 is also able to distinguish lung squamous cell carcinoma from lung adenocarcinoma with ~90% positive accuracy, when used in a panel with TTF-1, p63, CK5/6, and Napsin-A antibodies.

### Product Info

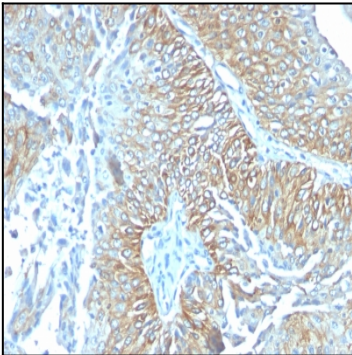
<b>Amount :</b>	100 µg
<b>Purification :</b>	Affinity Chromatography
<b>Content :</b>	100 µg in 500 µl PBS containing 0.05% BSA and 0.05% sodium azide. Sodium azide is highly toxic.
<b>Storage condition :</b>	Store the antibody at 4°C; stable for 6 months. For long-term storage; store at -20°C. Avoid repeated freeze and thaw cycles.

### Application Note

ELISA (For coating, order Ab without BSA); Immunohistochemistry (Formalin-fixed) (1-2ug/ml for 30 minutes at RT)(Staining of formalin-fixed tissues requires heating tissue sections in 10mM Tris with 1mM EDTA, pH 9.0, for 45 min at 95°C followed by cooling at RT for 20 minutes);



Formalin-fixed, paraffin-embedded human Lung Squamous Cell Carcinoma stained with TRIM29 Monoclonal Antibody (TRIM29/1041).



Formalin-fixed, paraffin-embedded human Esophageal carcinoma stained with TRIM29 Monoclonal Antibody (TRIM29/1041).