

## 10-4058: Monoclonal Antibody to TSLP Receptor (Clone: ABM28B6)

<b>Clonality :</b>	Monoclonal
<b>Clone Name :</b>	ABM28B6
<b>Application :</b>	FACS,WB
<b>Reactivity :</b>	Human
<b>Gene :</b>	CRLF2
<b>Gene ID :</b>	64109
<b>Uniprot ID :</b>	Q9HC73
<b>Format :</b>	Purified
<b>Alternative Name :</b>	CRLF2,CRL2,ILXR,TSLPR
<b>Isotype :</b>	Mouse IgG2a Kappa
<b>Immunogen Information :</b>	A partial length recombinant TSLPR protein (amino acids 97-252) was used as the immunogen for this antibody.

### Description

TSLPR (thymic stromal lymphopoietin receptor) also known as CRLF2 (cytokine receptor-like factor 2) is a member of type I cytokine receptor. It binds its ligand TSLP (thymic stromal lymphopoietin) as a heterodimer with IL7R. TSLP ligand is produced by epithelial cells in order to activate dendritic cells, and is involved in inflammation, allergic responses as well as B-cell precursor proliferation and survival. The interaction between TSLP and its heterodimeric receptor activate STAT3, STAT5, and JAK2 pathways, which control processes such as cell proliferation and development of the hematopoietic system. High expression of CRLF2 is associated with a poor prognosis in adult and high-risk pediatric cases of B-ALL (B-cell acute lymphoblastic leukemias).

### Product Info

<b>Amount :</b>	25 µg / 100 µg
<b>Purification :</b>	Protein G Chromatography
<b>Content :</b>	25 µg in 50 µl/100 µg in 200 µl PBS containing 0.05% BSA and 0.05% sodium azide. Sodium azide is highly toxic.
<b>Storage condition :</b>	Store the antibody at 4°C, stable for 6 months. For long-term storage, store at -20°C. Avoid repeated freeze and thaw cycles.

### Application Note

Western blot analysis: 2-4 µg/ml, Flowcytometric analysis: 0.5-1 µg/10<sup>6</sup> Cells

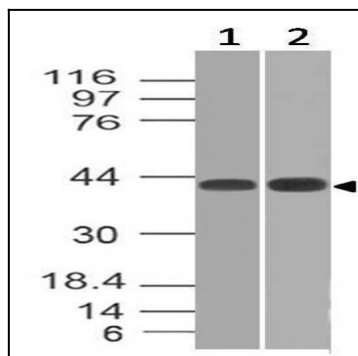


Figure 1: Western blot analysis of TSLP Receptor. Anti- TSLP Receptor antibody (Clone: ABM28B6) was tested at 2  $\mu$ g/ml on (1) THP-1 and (2) human heart lysate.

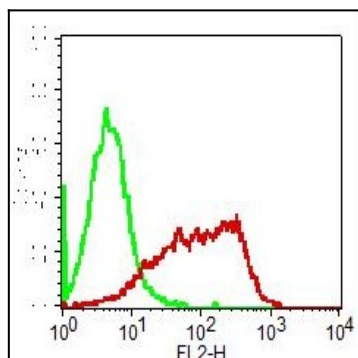


Figure 2: Cell surface staining of THP1 cells. Green represents Isotype control. Red represents Anti-TSLP Receptor (10-4058). 0.5  $\mu$ g antibodies were used. Goat anti-mouse PE was used as secondary antibody.