

## 36-1143: Monoclonal Antibody to CELA3B / ELA3B (Pancreatic Function Marker)(Clone : CELA3B/1218)

<b>Clonality :</b>	Monoclonal
<b>Clone Name :</b>	CELA3B/1218
<b>Application :</b>	WB,ELISA,WB
<b>Reactivity :</b>	Human
<b>Gene :</b>	CELA3B
<b>Gene ID :</b>	23436
<b>Uniprot ID :</b>	P08861
<b>Format :</b>	Purified
<b>Alternative Name :</b>	CELA3B,ELA3B
<b>Isotype :</b>	Mouse IgG1, kappa
<b>Immunogen Information :</b>	Recombinant human CELA3B protein

### Description

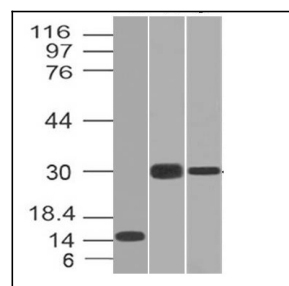
This MAb recognizes a protein of ~17kDa, identified as CELA3B (Chymotrypsin like elastase family member 3B). Elastases form a subfamily of serine proteases that hydrolyze many proteins in addition to elastin. Humans have six elastase genes which encode the structurally similar proteins elastase 1, 2, 2A, 2B, 3A, and 3B. Unlike other elastases, elastase 3B has little elastolytic activity. Like most of the human elastases, elastase 3B is secreted from the pancreas as a zymogen and, like other serine proteases such as trypsin, chymotrypsin and kallikrein; it has a digestive function in the intestine. Elastase 3B preferentially cleaves proteins after alanine residues. Elastase 3B may also function in the intestinal transport and metabolism of cholesterol. Both elastase 3A and elastase 3B have been referred to as protease E and as elastase 1, and excretion of this protein in fecal material is frequently used as a measure of pancreatic function in clinical assays.

### Product Info

<b>Amount :</b>	100 µg
<b>Purification :</b>	Affinity Chromatography
<b>Content :</b>	100 µg in 500 µl PBS containing 0.05% BSA and 0.05% sodium azide. Sodium azide is highly toxic.
<b>Storage condition :</b>	Store the antibody at 4°C; stable for 6 months. For long-term storage; store at -20°C. Avoid repeated freeze and thaw cycles.

### Application Note

Western Blot (2-4ug/ml); ELISA (Use Ab at 2-4ug/ml for coating) (Order Ab without BSA)Western Blot (1-2ug/ml);



Western Blot of Recombinant, Panc-28 and PANC1 Cell Lysates using CELA3B Monoclonal Antibody (CELA3B/1218).