

## 36-1127: Monoclonal Antibody to MART-1 / Melan-A / MLANA (Melanoma Marker)(Clone : M2-7C10)

|                                |                             |
|--------------------------------|-----------------------------|
| <b>Clonality :</b>             | Monoclonal                  |
| <b>Clone Name :</b>            | M2-7C10                     |
| <b>Application :</b>           | IHC                         |
| <b>Reactivity :</b>            | Human                       |
| <b>Gene :</b>                  | MLANA                       |
| <b>Gene ID :</b>               | 2315                        |
| <b>Uniprot ID :</b>            | Q16655                      |
| <b>Format :</b>                | Purified                    |
| <b>Alternative Name :</b>      | MLANA,MART1                 |
| <b>Isotype :</b>               | Mouse IgG2b, lambda         |
| <b>Immunogen Information :</b> | Recombinant hMART-1 protein |

### Description

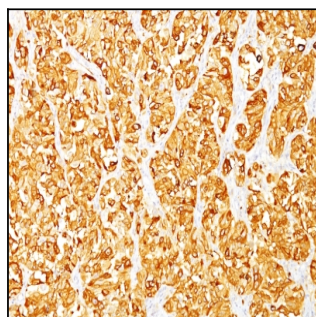
This antibody recognizes a protein doublet of 20-22kDa, identified as MART-1 (Melanoma Antigen Recognized by T cells 1) or Melan-A. MART-1 is a newly identified melanocyte differentiation antigen recognized by autologous cytotoxic T lymphocytes. Seven other melanoma associated antigens recognized by autologous cytotoxic T cells include MAGE-1, MAGE-3, tyrosinase, gp100, gp75, BAGE-1, and GAGE-1. Subcellular fractionation shows that MART-1 is present in melanosomes and endoplasmic reticulum. This MAb labels melanomas and other tumors showing melanocytic differentiation. It is also a useful positive-marker for angiomyolipomas. It does not stain tumor cells of epithelial, lymphoid, glial, or mesenchymal origin.

### Product Info

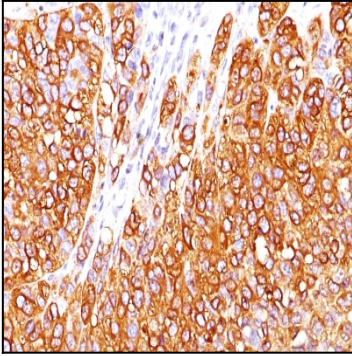
|                            |   |
|----------------------------|---|
| <b>Amount :</b>            | 100 µg  |
| <b>Purification :</b>      | Affinity Chromatography   |
| <b>Content :</b>           | 100 µg in 500 µl PBS containing 0.05% BSA and 0.05% sodium azide. Sodium azide is highly toxic.                               |
| <b>Storage condition :</b> | Store the antibody at 4°C; stable for 6 months. For long-term storage; store at -20°C. Avoid repeated freeze and thaw cycles. |

### Application Note

Immunohistochemistry (Formalin-fixed) (1-2ug/ml for 30 minutes at RT)(Staining of formalin-fixed tissues requires heating tissue sections in 10mM Tris with 1mM EDTA, pH 9.0, for 45 min at 95°C followed by cooling at RT for 20 minutes);



Formalin-fixed, paraffin-embedded human Melanoma stained with MART-1 Monoclonal Antibody (M2-7C10).



Formalin-fixed, paraffin-embedded human Melanoma stained with MART-1 Monoclonal Antibody (M2-7C10).