

## 36-1112: Monoclonal Antibody to Estrogen Receptor, alpha (Marker of Estrogen Dependence)(Clone : ER506)

<b>Clonality :</b>	Monoclonal
<b>Clone Name :</b>	ER506
<b>Application :</b>	FACS,WB,IHC
<b>Reactivity :</b>	Human
<b>Gene :</b>	ESR1
<b>Gene ID :</b>	2099
<b>Uniprot ID :</b>	P03372
<b>Format :</b>	Purified
<b>Alternative Name :</b>	ESR1,ESR,NR3A1
<b>Isotype :</b>	Mouse IgG1, kappa
<b>Immunogen Information :</b>	Recombinant human Estrogen Receptor alpha protein (aa2-185)

### Description

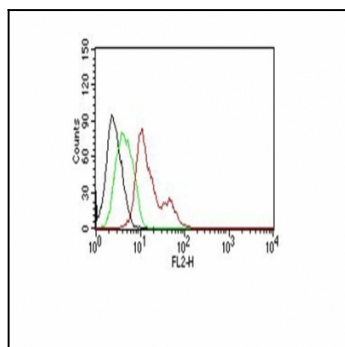
This MAb is specific to ER alpha and shows minimal cross-reaction with other members of the family. ER is an important regulator of growth and differentiation in the mammary gland. Presence of ER in breast tumors indicates an increased likelihood of response to anti-estrogen (e.g. tamoxifen) therapy. It strongly stains nuclei of epithelial cells in breast carcinomas.

### Product Info

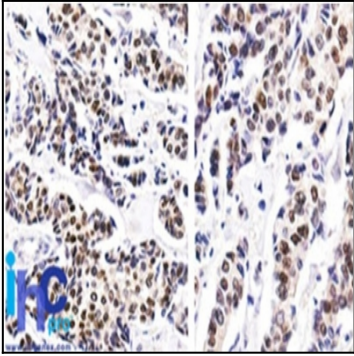
<b>Amount :</b>	100 µg
<b>Purification :</b>	Affinity Chromatography
<b>Content :</b>	100 µg in 500 µl PBS containing 0.05% BSA and 0.05% sodium azide. Sodium azide is highly toxic.
<b>Storage condition :</b>	Store the antibody at 4°C; stable for 6 months. For long-term storage; store at -20°C. Avoid repeated freeze and thaw cycles.

### Application Note

Flow Cytometry (1-2ug/million cells); ,Western Blot (1-2ug/ml);,Immunohistochemistry (Formalin-fixed) (Staining of formalin-fixed tissues requires heating tissue sections in 10mM Tris with 1mM EDTA, pH 9.0, for 45 min at 95&degC followed by cooling at RT for 20 minutes);



Flow Cytometry for human ER-alpha on MCF-7 Cells.Black: Cells alone; Green: Isotype Control; Red: PE-labeled ER-alpha Monoclonal Antibody (ER506).



Formalin-fixed, paraffin-embedded human Breast Invasive Ductal Carcinoma stained with Estrogen Receptor Monoclonal Antibody (ER506).