

## 36-1108: Monoclonal Antibody to HER-2 / c-erbB-2 / neu / CD340(Clone : ERB2/776)

<b>Clonality :</b>	Monoclonal
<b>Clone Name :</b>	ERB2/776
<b>Application :</b>	ELISA,FACS,IF
<b>Reactivity :</b>	Human
<b>Gene :</b>	ERBB2
<b>Gene ID :</b>	2064
<b>Uniprot ID :</b>	P04626
<b>Format :</b>	Purified
<b>Alternative Name :</b>	ERBB2,HER2,MLN19,NEU,NGL
<b>Isotype :</b>	Mouse IgG1, kappa
<b>Immunogen Information :</b>	Recombinant intracellular domain of human HER-2 protein

### Description

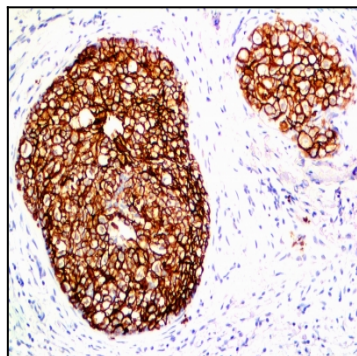
This MAb is specific to c-erbB-2/HER-2 and shows minimal cross-reaction with other members of the family. C-erbB-2/HER-2 is a member of the EGFR family. Receptors of this family are located on the plasma membrane and consist of an extracellular ligand-binding domain that is connected to a large intracellular domain by a single transmembrane sequence. c-erbB-2/HER-2 protein is over-expressed in a variety of carcinomas especially those of breast and ovary.

### Product Info

<b>Amount :</b>	100 µg
<b>Purification :</b>	Affinity Chromatography
<b>Content :</b>	100 µg in 500 µl PBS containing 0.05% BSA and 0.05% sodium azide. Sodium azide is highly toxic.
<b>Storage condition :</b>	Store the antibody at 4°C; stable for 6 months. For long-term storage; store at -20°C. Avoid repeated freeze and thaw cycles.

### Application Note

ELISA (For coating, order antibody without BSA);Flow Cytometry (1-2ug/million cells); Immunofluorescence (1-2ug/ml);



Formalin-fixed, paraffin-embedded human Breast Carcinoma stained with HER-2 Monoclonal Antibody (ERB2/776).