

36-1104: Monoclonal Antibody to HER-2 / c-erbB-2 / neu / CD340(Clone : HRB2/451)

Clonality :	Monoclonal
Clone Name :	HRB2/451
Application :	ELISA,FACS,IF
Reactivity :	Human
Gene :	ERBB2
Gene ID :	2064
Uniprot ID :	P04626
Format :	Purified
Alternative Name :	ERBB2,HER2,MLN19,NEU,NGL
Isotype :	Mouse IgG1, kappa
Immunogen Information :	Recombinant human HER-2 protein

Description

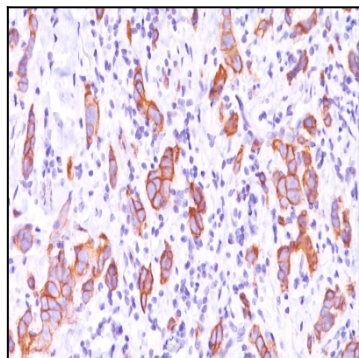
This MAb is specific to c-erbB-2/HER-2 and shows minimal cross-reaction with other members of the family. C-erbB-2/HER-2 is a member of the EGFR family. Receptors of this family are located on the plasma membrane and consist of an extracellular ligand-binding domain that is connected to a large intracellular domain by a single transmembrane sequence. c-erbB-2/HER-2 protein is over-expressed in a variety of carcinomas especially those of breast and ovary.

Product Info

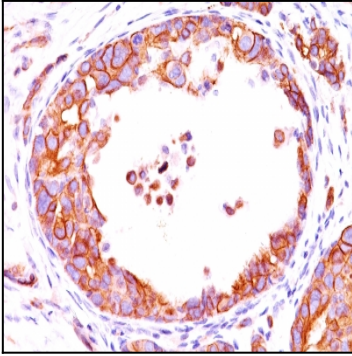
Amount :	100 µg
Purification :	Affinity Chromatography
Content :	100 µg in 500 µl PBS containing 0.05% BSA and 0.05% sodium azide. Sodium azide is highly toxic.
Storage condition :	Store the antibody at 4°C; stable for 6 months. For long-term storage; store at -20°C. Avoid repeated freeze and thaw cycles.

Application Note

ELISA (For coating, order antibody without BSA);,Flow Cytometry (1-2ug/million cells); ,Immunofluorescence (1-4ug/ml) ,



Formalin-fixed, paraffin-embedded human Breast Carcinoma stained with HER-2 Monoclonal Antibody (HRB2/451).



Formalin-fixed, paraffin-embedded human Breast Carcinoma stained with HER-2 Monoclonal Antibody (HRB2/451).