

36-1005: Monoclonal Antibody to p21WAF1 (Tumor Suppressor Protein)(Clone : CIP1/823)

Clonality :	Monoclonal
Clone Name :	CIP1/823
Application :	IF, WB, IHC
Reactivity :	Human
Gene :	CDKN1A
Gene ID :	1026
Uniprot ID :	P38936
Format :	Purified
Alternative Name :	CDKN1A, CAP20, CDKN1, CIP1, MDA6, PIC1, SDI1, WAF1
Isotype :	Mouse IgG2a, kappa
Immunogen Information :	Recombinant full-length human CDKN1A protein

Description

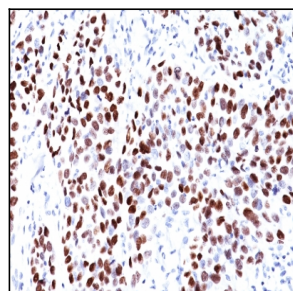
This MAb recognizes a 21kDa protein, identified as the p21WAF1 tumor suppressor protein. This MAb is highly specific to p21 and shows no cross-reaction with other closely related mitotic inhibitors. p21WAF1 is a specific inhibitor of cdk s and a tumor suppressor involved in the pathogenesis of a variety of malignancies. The expression of this gene acts as an inhibitor of the cell cycle during G1 phase and is tightly controlled by the tumor suppressor protein p53. Its expression is induced by the wild type, but not mutant, p53 suppressor protein. Normal cells generally display a rather intense nuclear p21 expression. Loss of p21 expression has been reported in many carcinomas (gastric carcinoma, non-small cell lung carcinoma, thyroid carcinoma).

Product Info

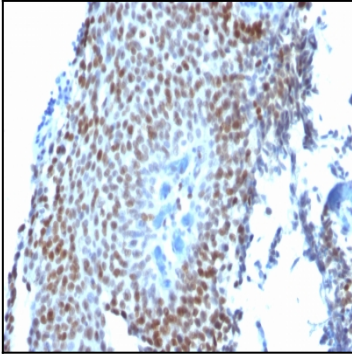
Amount :	100 µg
Purification :	Affinity Chromatography
Content :	100 µg in 500 µl PBS containing 0.05% BSA and 0.05% sodium azide. Sodium azide is highly toxic.
Storage condition :	Store the antibody at 4°C; stable for 6 months. For long-term storage; store at -20°C. Avoid repeated freeze and thaw cycles.

Application Note

Immunofluorescence (1-2ug/ml); Western Blot (1-2ug/ml); Immunohistochemistry (Formalin-fixed) (2-4ug/ml for 30 minutes at RT)(Staining of formalin-fixed tissues requires heating tissue sections in 10mM Tris with 1mM EDTA, pH 9.0, for 45 min at 95°C followed by cooling at RT for 20 minutes);



Formalin-fixed, paraffin-embedded human Lung Squamous Cell Carcinoma (SCC) stained with p21 Monoclonal Antibody (CIP1/823).



Formalin-fixed, paraffin-embedded human Bladder Carcinoma stained with p21 Monoclonal Antibody (CIP1/823).