

36-1036: Monoclonal Antibody to HCG-alpha (Pregnancy & Choriocarcinoma Marker)(Clone : SPM552)

Clonality :	Monoclonal
Clone Name :	SPM552
Application :	IHC
Reactivity :	Human
Gene :	CGA
Gene ID :	1081
Uniprot ID :	P01215
Format :	Purified
Alternative Name :	CGA
Isotype :	Mouse IgG1, kappa
Immunogen Information :	Recombinant hCG alpha protein

Description

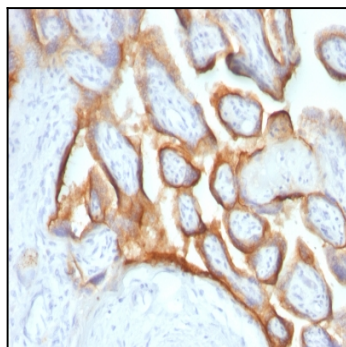
This MAb reacts with a protein of ~13kDa, identified as alpha sub-unit of HCG. HCG is a glycoprotein, which is secreted in large quantities by normal trophoblasts. It is present only in trace amounts in non-pregnant urine and sera but rises sharply during pregnancy. HCG is composed of two non-identical, non-covalently linked polypeptide chains designated as the alpha and beta subunits. The alpha subunit is identical to that of thyroid stimulating hormone (TSH), follicle stimulating hormone (FSH), and luteinizing hormone (LH).

Product Info

Amount :	100 µg
Purification :	Affinity Chromatography
Content :	100 µg in 500 µl PBS containing 0.05% BSA and 0.05% sodium azide. Sodium azide is highly toxic.
Storage condition :	Store the antibody at 4°C; stable for 6 months. For long-term storage; store at -20°C. Avoid repeated freeze and thaw cycles.

Application Note

Immunohistochemistry (Formalin-fixed) (1-2ug/ml for 30 minutes at RT)(Staining of formalin-fixed tissues requires heating tissue sections in 10mM Tris with 1mM EDTA, pH 9.0, for 45 min at 95°C followed by cooling at RT for 20 minutes);



Formalin-fixed, paraffin-embedded human Placenta stained with hCG alpha Monoclonal Antibody (SPM552).