

## 36-1059: Monoclonal Antibody to Topoisomerase (DNA) I, Mitochondrial (TOP1MT)(Clone : TOP1MT/488)

<b>Clonality :</b>	Monoclonal
<b>Clone Name :</b>	TOP1MT/488
<b>Application :</b>	FACS,IF,WB,IHC
<b>Reactivity :</b>	Human
<b>Gene :</b>	TOP1MT
<b>Gene ID :</b>	116447
<b>Uniprot ID :</b>	Q969P6
<b>Format :</b>	Purified
<b>Alternative Name :</b>	TOP1MT
<b>Isotype :</b>	Mouse IgG2b, kappa
<b>Immunogen Information :</b>	Recombinant full-length human TOP1MT protein

### Description

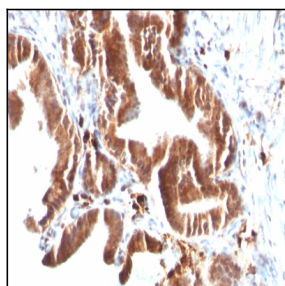
DNA topoisomerases are nuclear enzymes that regulate the topological structure of DNA in eukaryotic cells by transiently breaking and rejoining DNA strands. Due to their roles in DNA replication, recombination, and transcription, DNA topoisomerases have been identified as targets of numerous anticancer drugs. Mitochondrial Topo I (DNA topoisomerase I, mitochondrial) is a 601 amino acid protein that primarily acts to relieve DNA strain that may occur during duplication of mitochondrial DNA. As a type IB topoisomerase, mitochondrial Topo I requires a divalent metal, either, calcium or magnesium, as well as an alkaline pH for optimal activity.

### Product Info

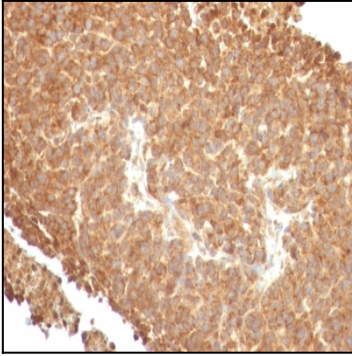
<b>Amount :</b>	100 µg
<b>Purification :</b>	Affinity Chromatography
<b>Content :</b>	100 µg in 500 µl PBS containing 0.05% BSA and 0.05% sodium azide. Sodium azide is highly toxic.
<b>Storage condition :</b>	Store the antibody at 4°C; stable for 6 months. For long-term storage; store at -20°C. Avoid repeated freeze and thaw cycles.

### Application Note

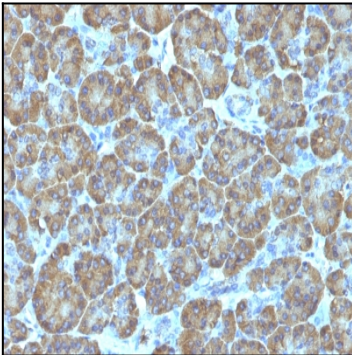
Flow Cytometry (0.5-1ug/million cells); ,Immunofluorescence (0.5-1ug/ml); Western Blot (0.5-2ug/ml);,Immunohistochemistry (Formalin-fixed) (1-2ug/ml for 30 minutes at RT),(Staining of formalin-fixed tissues requires heating tissue sections in 10mM Tris with 1mM EDTA, pH 9.0, for 45 min at 95 &degC followed by cooling at RT for 20 minutes),



Formalin-fixed, paraffin-embedded human Gallbladder stained with Topo I, MT Monoclonal Antibody (TOP1MT/488).



Formalin-fixed, paraffin-embedded human Melanoma stained with Topo I, MT Monoclonal Antibody (TOP1MT/488).



Formalin-fixed, paraffin-embedded human Pancreas stained with Topo I, MT Monoclonal Antibody (TOP1MT/488).