

## 10-3018: Monoclonal Antibody to NALP3 (Clone: ABM2D48)

|                                |   |
|--------------------------------|---|
| <b>Clonality :</b>             | Monoclonal  |
| <b>Clone Name :</b>            | ABM2D48   |
| <b>Application :</b>           | IHC,WB  |
| <b>Reactivity :</b>            | Mouse,Human   |
| <b>Gene :</b>                  | NLRP3   |
| <b>Gene ID :</b>               | 114548  |
| <b>Uniprot ID :</b>            | Q96P20  |
| <b>Format :</b>                | Purified  |
| <b>Alternative Name :</b>      | NLRP3,C1orf7,CIAS1,NALP3,PYPAF1   |
| <b>Isotype :</b>               | Mouse IgG2b Kappa   |
| <b>Immunogen Information :</b> | A partial length recombinant NALP3 protein (amino acids 150-385) was used as the immunogen for this antibody. |

### Description

NALP3 (NACHT, LRR and PYD domains-containing protein 3), otherwise known as cryopyrin, is a member of the NLR (Nod-like-receptors) family. This is a pyrin-like protein, having N-terminal CARD or pyrin domains needed for homotypic protein interaction, an intermediate nucleotide binding self oligomerization NACHT domain and a C-terminal domain containing leucine rich repeats (LRRs). NALP3 is a key component of innate immunity and its expression is restricted to immune cells and chondrocytes. It interacts with the apoptosis-associated speck-like protein PYCARD/ASC, which contains a caspase recruitment domain, and is a member of the NALP3 inflammasome complex. This complex functions as an upstream activator of NF- $\kappa$ B signaling, and it plays an important role in the regulation of inflammation, the immune response, and apoptosis.

### Product Info

|                            |  |
|----------------------------|--|
| <b>Amount :</b>            | 25 $\mu$ g / 100 $\mu$ g   |
| <b>Purification :</b>      | Protein G Chromatography   |
| <b>Content :</b>           | 25 $\mu$ g in 50 $\mu$ l/100 $\mu$ g in 200 $\mu$ l PBS containing 0.05% BSA and 0.05% sodium azide. Sodium azide is highly toxic. |
| <b>Storage condition :</b> | Store the antibody at 4°C, stable for 6 months. For long-term storage, store at -20°C. Avoid repeated freeze and thaw cycles.      |

### Application Note

Western blot analysis: 6-8  $\mu$ g/ml, Immunohistochemical analysis: 5  $\mu$ g/ml

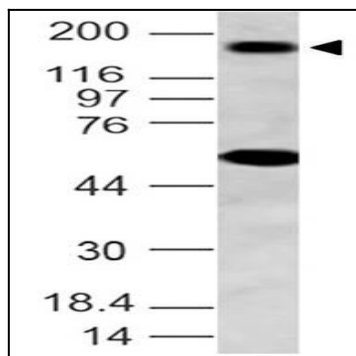


Fig-1: Western blot analysis of NALP3. Anti- NALP3 antibody (Clone: ABM2D48) was tested at 8  $\mu$ g/ml on NIH 3T3 lysate.

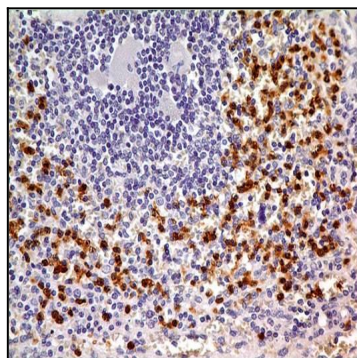


Fig-2 : Immunohistochemical analysis of NALP3 in human spleen tissue using NALP3 antibody (Clone: ABM2D48) at 5  $\mu$ g/ml.