

36-1083: Monoclonal Antibody to AFP (Alpha Fetoprotein) (Hepatocellular/Germ Cell Tumor Marker)(Clone : C2)

Clonality :	Monoclonal
Clone Name :	C2
Application :	IHC
Reactivity :	Human
Gene :	AFP
Gene ID :	174
Uniprot ID :	P02771
Format :	Purified
Alternative Name :	AFP,HPAFP
Isotype :	Mouse IgG1, kappa
Immunogen Information :	Alpha fetoprotein (AFP) purified from serum of a hepatoma patient

Description

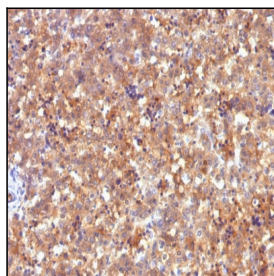
It recognizes an oncofetal glycoprotein with a single chain of 70kDa, which is identified as alpha fetoprotein (AFP) (ISOBM TD-2 workshop). This MAb is highly specific to AFP and shows no cross-reaction with other oncofetal antigens or serum albumin. AFP is normally synthesized in the liver, intestinal tract, and yolk sac of the fetus. Antibody to AFP has been shown to be useful in detecting hepatocellular carcinomas (HCC) and germ cell neoplasms, especially yolk sac tumors.

Product Info

Amount :	100 µg
Purification :	Affinity Chromatography
Content :	100 µg in 500 µl PBS containing 0.05% BSA and 0.05% sodium azide. Sodium azide is highly toxic.
Storage condition :	Store the antibody at 4°C; stable for 6 months. For long-term storage; store at -20°C. Avoid repeated freeze and thaw cycles.

Application Note

Immunohistochemistry (Formalin-fixed) (1-2ug/ml for 30 min at RT)(Staining of formalin-fixed tissues requires heating tissue sections in 10mM Tris with 1mM EDTA, pH 9.0, for 45 min at 95°C followed by cooling at RT for 20 minutes);



Formalin-fixed, paraffin-embedded human Fetal Liver stained with AFP Monoclonal Antibody (C2).