

36-1097: Monoclonal Antibody to EGFR (Epidermal Growth Factor Receptor)(Clone : Clone : GFR450)

Clonality :	Monoclonal
Clone Name :	GFR450
Application :	FACS,IF
Reactivity :	Human
Gene :	EGFR
Gene ID :	1956
Uniprot ID :	P00533
Format :	Purified
Alternative Name :	EGFR,ERBB,ERBB1,HER1
Isotype :	Mouse IgG2a, kappa
Immunogen Information :	Recombinant extracellular domain of human EGFR protein

Description

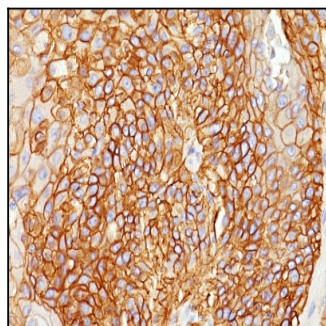
This MAbs recognizes a protein of 170kDa, identified as EGFR. EGFR is type I receptor tyrosine kinase with sequence homology to erbB-1, -2, -3 -4 or HER-1, -2, -3 -4. It binds to Epidermal Growth Factor (EGF), Transforming Growth Factor- α (TGF- α), Heparin-binding EGF (HB-EGF), amphiregulin, beta cellulin and epiregulin. EGFR is overexpressed in tumors of breast, brain, bladder, lung, gastric, head & neck, esophagus, cervix, vulva, ovary, and endometrium. It is predominantly present in squamous cell carcinomas.

Product Info

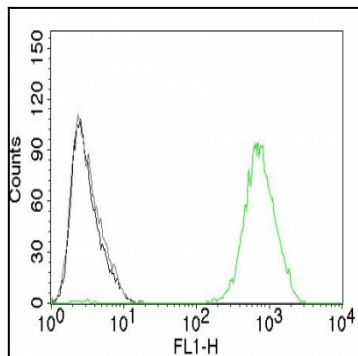
Amount :	100 μ g
Purification :	Affinity Chromatography
Content :	100 μ g in 500 μ l PBS containing 0.05% BSA and 0.05% sodium azide. Sodium azide is highly toxic.
Storage condition :	Store the antibody at 4°C; stable for 6 months. For long-term storage; store at -20°C. Avoid repeated freeze and thaw cycles.

Application Note

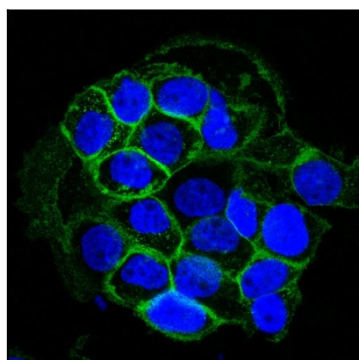
Flow Cytometry (1-2 μ g/million cells); Immunofluorescence (1-2 μ g/ml);



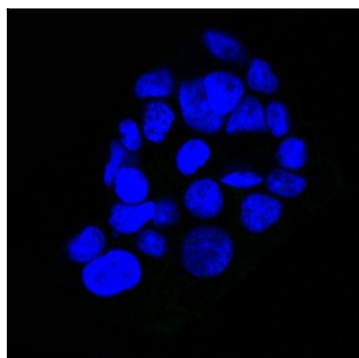
Formalin-fixed, paraffin-embedded Lung Squamous Cell Carcinoma stained with EGFR Monoclonal Antibody (GFR450).



Flow Cytometry of human EGFR on A431 Cells. Black: Cells alone; Grey: Isotype Control; Green: AF488-labeled EGFR Monoclonal Antibody (GFR450).



Confocal Immunofluorescent analysis of A431 cells using AF488-labeled EGFR Monoclonal Antibody (GFR450) (Green). DAPI was used to stain the cell nuclei (blue).



Confocal Immunofluorescent analysis of A431 cells using AF488-labeled Isotype Control Monoclonal Antibody (IgG2a) (Green). DAPI was used to stain the cell nuclei (blue). (Negative Control)