

11-12025: Polyclonal Antibody to Otx2

Clonality :	Polyclonal
Application :	WB
Reactivity :	Human
Gene :	OTX2
Gene ID :	5015
Uniprot ID :	P32243
Format :	Purified
Alternative Name :	OTX2
Isotype :	Rabbit IgG
Immunogen Information :	A partial length recombinant Otx2 protein (amino acids 1-204) was used as the immunogen for this antibody.

Description

Otx2 encodes a transcription factor that plays a critical role in craniofacial development and anterior brain morphogenesis. Otx2 homologs in model organisms are expressed in a complex spatial, temporal, and gradient-specific manner that is required for correct antero-posterior patterning and craniofacial development. Otx2 mutations are associated with severe ocular phenotypes and central nervous system abnormalities such as seizures, short stature and developmental delay, CPHD (Combined Pituitary Hormone Deficiency), structural abnormalities of the pituitary gland and early onset retinal dystrophy.

Product Info

Amount :	25 µg / 100 µg
Purification :	Protein A Chromatography
Content :	25 µg in 50 µl/100 µg in 200 µl PBS containing 0.05% BSA and 0.05% sodium azide. Sodium azide is highly toxic.
Storage condition :	Store the antibody at 4°C; stable for 6 months. For long-term storage; store at -20°C. Avoid repeated freeze and thaw cycles.

Application Note

Western blot analysis: 2-4 µg/ml

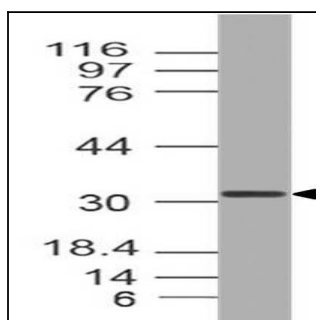


Fig-1: Expression analysis of Otx2. Anti-Otx2 antibody (11-12025) was used at 2 µg/ml on Jurkat lysate.