

11-12024: Polyclonal Antibody to DLX3/distal-less homeobox 3

Clonality :	Polyclonal
Application :	WB
Reactivity :	Human
Gene :	DLX3
Gene ID :	1747
Uniprot ID :	O60479
Format :	Purified
Alternative Name :	DLX3
Isotype :	Rabbit IgG
Immunogen Information :	A partial length recombinant DLX3 protein (amino acids 93-282) was used as the immunogen for this antibody.

Description

DLX3 (Distal-less homeobox 3) is a member of the large homeobox gene family of transcription factors. It plays a crucial role during embryonic development. DLX3 is expressed in a variety of tissues including placenta, skin, hair, teeth, and bone. Dlx3 interacts with Smad6, a member of a larger family of transcriptional regulators; generally regulate transforming growth factor beta/bone morphogenetic protein signaling. DLX3 supports the osteogenic differentiation in DFCs (Dental follicle cells) via a positive feedback loop with the bone morphogenetic protein (BMP) 2.

Product Info

Amount :	25 µg / 100 µg
Purification :	Protein A Chromatography
Content :	25 µg in 50 µl/100 µg in 200 µl PBS containing 0.05% BSA and 0.05% sodium azide. Sodium azide is highly toxic.
Storage condition :	Store the antibody at 4°C; stable for 6 months. For long-term storage; store at -20°C. Avoid repeated freeze and thaw cycles.

Application Note

Western blot analysis: 2-4 µg/ml

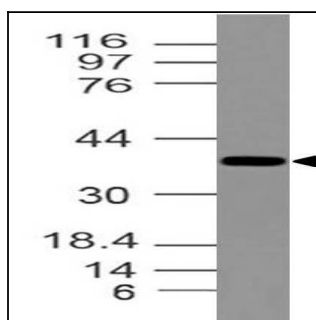


Fig-1: Expression analysis DLX3. Anti-DLX3 antibody (11-12024) was used at 2 µg/ml on C2C12 lysate.