

## 11-12016: Polyclonal Antibody to POU3F2

<b>Clonality :</b>	Polyclonal
<b>Application :</b>	WB
<b>Reactivity :</b>	Human
<b>Gene :</b>	POU3F2
<b>Gene ID :</b>	5454
<b>Uniprot ID :</b>	P20265
<b>Format :</b>	Purified
<b>Alternative Name :</b>	POU3F2,BRN2,OCT7,OTF7
<b>Isotype :</b>	Rabbit IgG
<b>Immunogen Information :</b>	A partial length recombinant POU3F2 protein (amino acids 220-421) was used as the immunogen for this antibody.

### Description

POU3F2 is a developmental neural cell-specific POU domain transcription factor and is crucial for cell lineage determination. In melanoma lesions, cells expressing high levels of POU3F2 show enhanced invasive and metastatic capacity that can in part be explained by repression of MITF (Microphthalmia-associated Transcription Factor) expression via POU3F2 binding to its promoter. POU3F2 is expressed exclusively in the central nervous system, more specifically in post-mitotic neurons and glia.

### Product Info

<b>Amount :</b>	25 µg / 100 µg
<b>Purification :</b>	Protein A Chromatography
<b>Content :</b>	25 µg in 50 µl/100 µg in 200 µl PBS containing 0.05% BSA and 0.05% sodium azide. Sodium azide is highly toxic.
<b>Storage condition :</b>	Store the antibody at 4°C; stable for 6 months. For long-term storage; store at -20°C. Avoid repeated freeze and thaw cycles.

### Application Note

Western blot analysis: 1-2 µg/ml

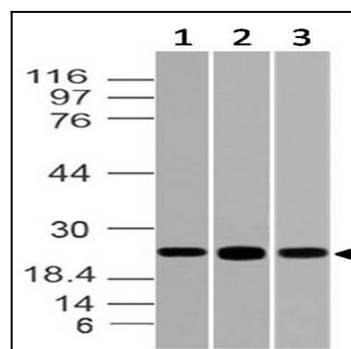


Fig-1: Expression analysis of POU3F2. Anti-POU3F2 antibody (11-12016) was used at 1 µg/ml on (1) K562, (2) HCT-116 and (3) 293 lysates