

## 11-8009: Polyclonal Antibody to RDC1

<b>Clonality :</b>	Polyclonal
<b>Application :</b>	WB
<b>Reactivity :</b>	Human
<b>Gene :</b>	ACKR3
<b>Gene ID :</b>	57007
<b>Uniprot ID :</b>	P25106
<b>Format :</b>	Purified
<b>Alternative Name :</b>	ACKR3,CMKOR1,CXCR7,GPR159,RDC1
<b>Isotype :</b>	Rabbit IgG
<b>Immunogen Information :</b>	A partial length recombinant RDC1 protein (amino acids 96-302) was used as the immunogen for this antibody.

### Description

RDC1 is a chemokine receptor that belongs to the membrane-bound G protein-coupled receptor superfamily. It is frequently and specifically expressed in tumor-associated vessels. It controls cell proliferation and migration during development, tumorigenesis, and inflammatory processes. It represents an atypical or scavenger chemokine receptor which modulates the function of CXCR4. RDC1 is involved in the EMT (Epithelial-mesenchymal transition) process of epithelial ovarian carcinomas.

### Product Info

<b>Amount :</b>	25 µg / 100 µg
<b>Purification :</b>	Protein A Chromatography
<b>Content :</b>	25 µg in 50 µl/100 µg in 200 µl PBS containing 0.05% BSA and 0.05% sodium azide. Sodium azide is highly toxic.
<b>Storage condition :</b>	Store the antibody at 4°C; stable for 6 months. For long-term storage; store at -20°C. Avoid repeated freeze and thaw cycles.

### Application Note

Western blot analysis: 0.5-1 µg/ml

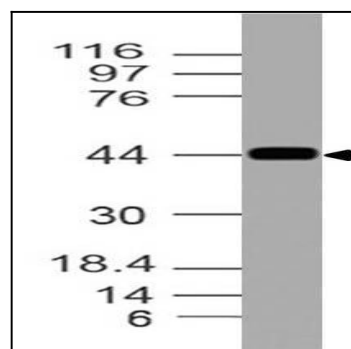


Fig-1: Western blot analysis RDC1. Anti-RDC1 antibody (11-8009) was used at 0.5 µg/ml on HL-60 lysate.