

10-4031: Monoclonal Antibody to Siglec-H (Clone: ABM2B55)

Clonality :	Monoclonal
Clone Name :	ABM2B55
Application :	WB
Reactivity :	Mouse
Gene :	Siglech
Gene ID :	233274
Uniprot ID :	Q3Y597
Format :	Purified
Alternative Name :	Siglech,Siglec-H
Isotype :	Rat IgG2a Kappa
Immunogen Information :	A partial length recombinant mouse Siglec-H protein (amino acids 109-309) was used as the immunogen for this antibody.

Description

Siglec H (Sialic acid binding Ig-like lectin H) is cell surface protein of murine origin. Siglec H is mainly distributed in eosinophils and it binds to sialic acid. Siglec H lacks tyrosine based signaling motifs in its cytoplasmic tail, which gives it a special structural identity for binding sialic acid without binding with carbohydrates. Siglec H is specifically expressed in bone marrow, spleen, blood and lymph nodes.

Product Info

Amount :	25 µg / 100 µg
Purification :	Protein G Chromatography
Content :	25 µg in 50 µl/100 µg in 200 µl PBS containing 0.05% BSA and 0.05% sodium azide. Sodium azide is highly toxic.
Storage condition :	Store the antibody at 4°C, stable for 6 months. For long-term storage, store at -20°C. Avoid repeated freeze and thaw cycles.

Application Note

Western blot analysis: 2-4 µg/ml

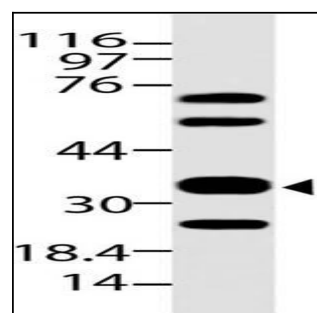


Figure-1: Western blot analysis of Siglec-H. Anti-Siglec-H antibody (Clone: ABM2B55) was used at 2 µg/ml on mouse SKM lysate.

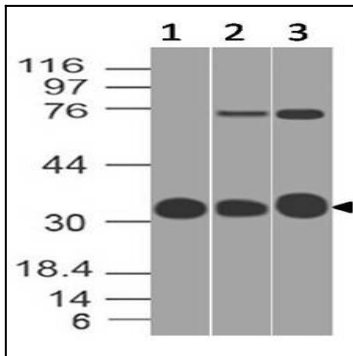


Figure-2: Western blot analysis of Siglec-H. Anti-Siglec-H antibody (Clone: ABM2B55) was used at 2 $\mu\text{g/ml}$ on (1) mouse Heart, (2) mouse Liver and (3) mouse Kidney lysates.