

11-8065: Polyclonal Antibody to Mafa

| | |
|--------------------------------|--|
| Clonality : | Polyclonal |
| Application : | WB |
| Reactivity : | Human |
| Gene : | MAFA |
| Gene ID : | 389692 |
| Uniprot ID : | Q8NHW3 |
| Format : | Purified |
| Alternative Name : | MAFA |
| Isotype : | Rabbit IgG |
| Immunogen Information : | A partial length recombinant Mafa protein (amino acids 192-353) was used as the immunogen for this antibody. |

Description

Musculoaponeurotic fibrosarcoma oncogene family A (MafA) is a pancreatic transcriptional factor that is important to pancreatic beta-cell function. It is a member of the musculo-aponeurotic fibrosarcoma oncogene family, a subgroup of the basic leucine zipper transcription factors with homology to the v-Maf oncoprotein. It acts as a transcriptional regulator that promotes the expression of genes important in glucose-induced insulin secretion, such as insulin, glucokinase and glucose transporter protein-2. Mafa is unique in being exclusively expressed at the secondary and principal phase of insulin-expressing cell production during pancreas organogenesis and is the only transcriptional activator present exclusively in islet beta-cells thus may be involved in pathogenesis of diabetes.

Product Info

| | |
|----------------------------|---|
| Amount : | 25 µg / 100 µg |
| Purification : | Protein A Chromatography |
| Content : | 25 µg in 50 µl/100 µg in 200 µl PBS containing 0.05% BSA and 0.05% sodium azide. Sodium azide is highly toxic. |
| Storage condition : | Store the antibody at 4°C; stable for 6 months. For long-term storage; store at -20°C. Avoid repeated freeze and thaw cycles. |

Application Note

Western blot analysis: 1-2 µg/ml

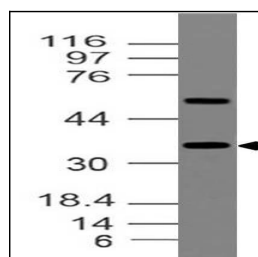


Fig-1: Western blot analysis of Mafa. Anti-Mafa antibody (11-8065) was used at 1 µg/ml on h Kidney lysate.