

## 11-8067: Polyclonal Antibody to KLF10

<b>Clonality :</b>	Polyclonal
<b>Application :</b>	WB
<b>Reactivity :</b>	Human
<b>Gene :</b>	KLF10
<b>Gene ID :</b>	7071
<b>Uniprot ID :</b>	Q13118
<b>Format :</b>	Purified
<b>Alternative Name :</b>	KLF10,TIEG,TIEG1
<b>Isotype :</b>	Rabbit IgG
<b>Immunogen Information :</b>	A partial length recombinant KLF10 protein (amino acids 11-221) was used as the immunogen for this antibody.

### Description

Kruppel-like factor 10 (KLF10) is a member of the Kruppel-like family of transcription factors, which are known to be involved in anti-proliferative and apoptotic inducing functions following TGF-beta induction. KLF10 plays an important role in the repression of proliferative and hypertrophic pathways, possibly through the actions of PTTG1 (pituitary tumor-transforming gene 1). KLF10 is found to be predominantly expressed in various tissues and its expression is regulated by cytokines and growth factors. Over-expression of KLF10 has been found to induce apoptosis in pancreatic cancer cells. In addition, KLF10 induces apoptosis via a mechanism which involves the formation of reactive oxygen species.

### Product Info

<b>Amount :</b>	25 µg / 100 µg
<b>Purification :</b>	Protein A Chromatography
<b>Content :</b>	25 µg in 50 µl/100 µg in 200 µl PBS containing 0.05% BSA and 0.05% sodium azide. Sodium azide is highly toxic.
<b>Storage condition :</b>	Store the antibody at 4°C; stable for 6 months. For long-term storage; store at -20°C. Avoid repeated freeze and thaw cycles.

### Application Note

Western blot analysis: 1-2 µg/ml

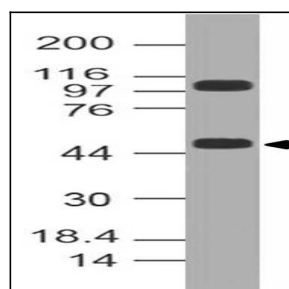


Fig-1: Western blot analysis of KLF10. Anti-KLF10 antibody (11-8067) was used at 1 µg/ml on Hela lysate.