

## 11-10038: Polyclonal Antibody to Delta like 3

<b>Clonality :</b>	Polyclonal
<b>Application :</b>	WB
<b>Reactivity :</b>	Human
<b>Gene :</b>	DLL3
<b>Gene ID :</b>	10683
<b>Uniprot ID :</b>	Q9NYJ7
<b>Format :</b>	Purified
<b>Alternative Name :</b>	DLL3
<b>Isotype :</b>	Rabbit IgG
<b>Immunogen Information :</b>	A partial length recombinant Delta like 3 protein (amino acids 62-286) was used as the immunogen for this antibody.

### Description

Delta like 3 (DLL3) is a member of Delta/Serrate/Lag2 (DSL) ligands for Notch receptors and plays a role in Notch signaling. Out of Five DSL ligands, DLL3 is the most structurally divergent DSL ligand. DLL3 is expressed throughout the presomitic mesoderm and is localized to the rostral somatic compartments. Homozygous disruptions of Notch1 and DLL3 result in severe abnormalities in somitogenesis. Mutations in the human DLL3 homolog cause recessive skeletal abnormalities in spondylocostal dysostosis with a consistent pattern of abnormal segmentation.

### Product Info

<b>Amount :</b>	25 µg / 100 µg
<b>Purification :</b>	Protein A Chromatography
<b>Content :</b>	25 µg in 50 µl/100 µg in 200 µl PBS containing 0.05% BSA and 0.05% sodium azide. Sodium azide is highly toxic.
<b>Storage condition :</b>	Store the antibody at 4°C; stable for 6 months. For long-term storage; store at -20°C. Avoid repeated freeze and thaw cycles.

### Application Note

Western blot analysis: 2-4 µg/ml

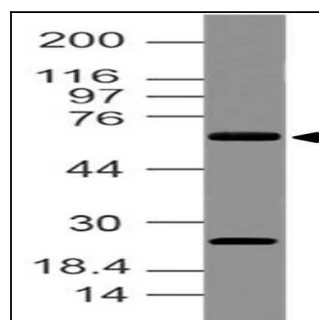


Fig-1: Expression analysis of Delta like 3. Anti-Delta like 3 antibody (11-10038) was used at 2 µg/ml on A375 lysate.