

## 11-12008: Polyclonal Antibody to MEIS1

<b>Clonality :</b>	Polyclonal
<b>Application :</b>	WB
<b>Reactivity :</b>	Human
<b>Gene :</b>	MEIS1
<b>Gene ID :</b>	4211
<b>Uniprot ID :</b>	O00470
<b>Format :</b>	Purified
<b>Alternative Name :</b>	MEIS1
<b>Isotype :</b>	Rabbit IgG
<b>Immunogen Information :</b>	A partial length recombinant MEIS1 protein (amino acids 163-352) was used as the immunogen for this antibody.

### Description

Myeloid ecotropic viral insertion site 1 (MEIS1) is a transcription factor belonging to TALE (three amino acids loop extension) family. The gene for MEIS1 is mapped to human chromosome 2p15. The amino terminus contains binding domains for its interaction partners, the transcription factors HOXA9 and PBX1, followed by a homeobox DNA binding domain and carboxy-terminal transcriptional activation domains. It is expressed in hematopoietic stem and progenitor cells and increases during human megakaryocytic differentiation. MEIS1 plays a role in the normal development of the hematopoietic lineage and is over expressed in a subset of acute myeloid leukemias. Increased MEIS1 expression has also been observed in neuroblastomas and the expression level of the MEIS1 transcript is a prognostic indicator in breast cancer.

### Product Info

<b>Amount :</b>	25 µg / 100 µg
<b>Purification :</b>	Protein A Chromatography
<b>Content :</b>	25 µg in 50 µl/100 µg in 200 µl PBS containing 0.05% BSA and 0.05% sodium azide. Sodium azide is highly toxic.
<b>Storage condition :</b>	Store the antibody at 4°C; stable for 6 months. For long-term storage; store at -20°C. Avoid repeated freeze and thaw cycles.

### Application Note

Western blot analysis: 1-2 µg/ml

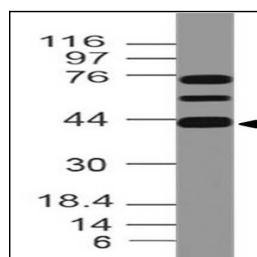


Fig-1: Expression analysis of MEIS1. Anti-MEIS1 antibody (11-12008) was used at 1 µg/ml on h Heart lysate.