

10-7573: Monoclonal Antibody to MLH1 (Clone: ABM4D74)

Clonality :	Monoclonal
Clone Name :	ABM4D74
Application :	IHC
Reactivity :	Human
Gene :	MLH1
Gene ID :	4292
Uniprot ID :	P40692
Format :	Purified
Alternative Name :	MLH1,COCA2
Isotype :	Mouse IgG2b
Immunogen Information :	A partial length recombinant MLH1 protein (amino acids 289-492) was used as the immunogen for this antibody.

Description

MutL homolog 1 (MLH1) is a member of mismatch repair genes (MMR) that plays a crucial role in correcting replication errors, cell cycle arrest, apoptosis and oxidative stress. MLH1 is a human homolog of the E.coli DNA mismatch repair gene. It mediates protein-protein interactions during mismatch recognition, strand discrimination, and strand removal. Diseases associated with MLH1 include colorectal cancer, hereditary nonpolyposis, type 2 and lynch syndrome.

Product Info

Amount :	25 µg / 100 µg
Purification :	Protein G Chromatography
Content :	25 µg in 50 µl/100 µg in 200 µl PBS containing 0.05% BSA and 0.05% sodium azide. Sodium azide is highly toxic.
Storage condition :	Store the antibody at 4°C; stable for 6 months. For long-term storage; store at -20°C. Avoid repeated freeze and thaw cycles.

Application Note

Immunohistochemical analysis: 5-10 Åµg/ml

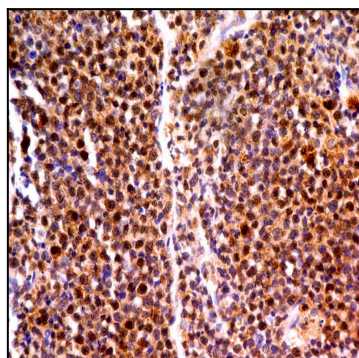


Fig-1: Immunohistochemical analysis of MLH1 in Lymphoma tissue using MLH1 antibody (Clone: ABM4D74) at 5 µg/ml.