

10-1010: Monoclonal Antibody to AKT1 (Clone: ABM12F7)

| | |
|--------------------------------|---|
| Clonality : | Monoclonal |
| Clone Name : | ABM12F7 |
| Application : | FACS,WB |
| Reactivity : | Human |
| Gene : | AKT1 |
| Gene ID : | 207 |
| Uniprot ID : | P31749 |
| Format : | Purified |
| Alternative Name : | RAC-alpha serine/threonine-protein kinase, Protein kinase B, Proto-oncogene c-Akt |
| Isotype : | Mouse IgG1 Kappa |
| Immunogen Information : | A partial length recombinant AKT1 protein (amino acids 220-480) was used as the immunogen for this antibody |

Product Info

| | |
|----------------------------|---|
| Amount : | 25 µg / 100 µg |
| Purification : | Protein G Chromatography |
| Content : | 25 µg in 50 µl/100 µg in 200 µl PBS containing 0.05% BSA and 0.05% sodium azide. Sodium azide is highly toxic. |
| Storage condition : | Store the antibody at 4°C, stable for 6 months. For long-term storage, store at -20°C. Avoid repeated freeze and thaw cycles. |

Application Note

Western blot analysis: 2-4 µg/ml, Flowcytometric analysis: 0.5-1µg/10⁶ cells

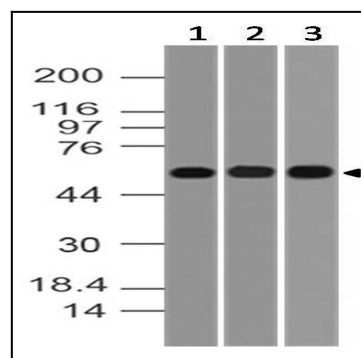


Fig-1: Western blot analysis of AKT1. Anti- AKT1 antibody (Clone: ABM12F7) was tested at 2 µg/ml on SKBR3, PC3 and BT474.

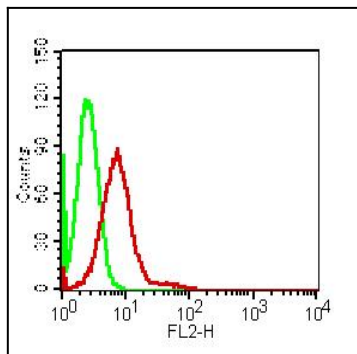


Figure-2: Intracellular flowcytometric analysis of AKT1 in HePG2 cell lines using 0.5 $\mu\text{g}/10^6$ cells of AKT-1 antibody (ABM12F7). Green represent isotype control and red represent Anti-AKT1 antibody (10-1010 Abeomics). Goat Anti-Mouse PE was used as the secondary antibody

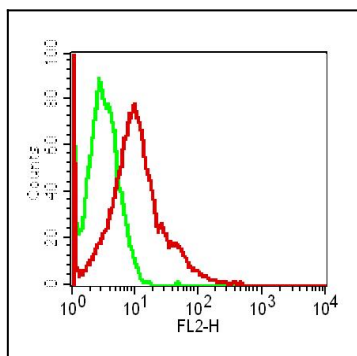


Figure-3: Intracellular flowcytometric analysis of AKT1 in HeLa cell lines using 0.5 $\mu\text{g}/10^6$ cells of AKT-1 antibody (ABM12F7). Green represent isotype control and red represent Anti-AKT1 antibody (10-1010 Abeomics). Goat Anti-Mouse PE was used as the secondary antibody