

10-7568: Monoclonal Antibody to Napsin A (Clone: ABM4H60)

Clonality :	Monoclonal
Clone Name :	ABM4H60
Application :	IHC,WB
Reactivity :	Human
Gene :	NAPSA
Gene ID :	9476
Uniprot ID :	O96009
Format :	Purified
Alternative Name :	NAPSA,NAP1,NAPA
Isotype :	Mouse IgG1 Kappa
Immunogen Information :	A partial length recombinant Napsin protein (amino acids 150-350) was used as the immunogen for this antibody

Description

Napsin A, a human aspartic proteinase is found primarily in type II pneumocytes and alveolar macrophages and predominantly expressed in lung and kidney. It is a reliable marker for pulmonary adenocarcinoma and is expressed in a subset of ovarian clear cell carcinomas (O-CCCs), endometrial (EM) CCCs, and endometrioid carcinomas (EC). It is also useful in evaluating SH (Sclerosing hemangiomas) (23194051). Napsin A acts as an anti-apoptotic protein that promotes resistance to cisplatin by degradation of the tumor suppressor p53, which is regulator of the cell cycle and co-works with cyclin kinase inhibitors as p21 and p27.

Product Info

Amount :	25 µg / 100 µg
Purification :	Protein G Chromatography
Content :	25 µg in 50 µl/100 µg in 200 µl PBS containing 0.05% BSA and 0.05% sodium azide. Sodium azide is highly toxic.
Storage condition :	Store the antibody at 4°C; stable for 6 months. For long-term storage; store at -20°C. Avoid repeated freeze and thaw cycles.

Application Note

Western blot analysis: 2-4 µg/ml; Immunohistochemical analysis: 5-10 µg/ml

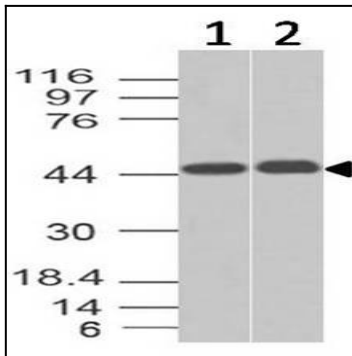


Fig-1: Western blot analysis of Napsin A. Anti-Napsin A antibody (Clone: ABM4H60) was tested at 2 $\mu\text{g/ml}$ on (1) A549 and (2) HepG2 lysates.

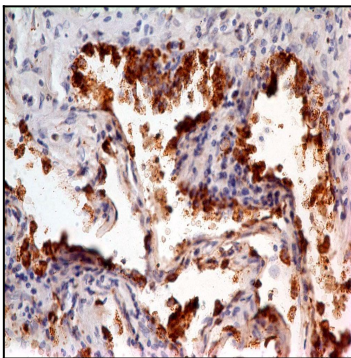


Fig-2: Immunohistochemical analysis of Napsin in Lung Adenocarcinoma tissue using Napsin antibody (Clone: ABM4H60) at 5 $\mu\text{g/ml}$.