

## 10-6002: Monoclonal Antibody to TRF2 (Clone: ABM10H3)

<b>Clonality :</b>	Monoclonal
<b>Clone Name :</b>	ABM10H3
<b>Application :</b>	IHC,WB
<b>Reactivity :</b>	Human
<b>Gene :</b>	TERF2
<b>Gene ID :</b>	7014
<b>Uniprot ID :</b>	Q15554
<b>Format :</b>	Purified
<b>Alternative Name :</b>	TERF2,TRBF2,TRF2
<b>Isotype :</b>	Mouse IgG1 Kappa
<b>Immunogen Information :</b>	Full length recombinant TRF2 protein was used as the immunogen for this antibody.

### Description

TRF2 (Telomere Repeat Binding Factor 2), a subunit of the shelterin complex, binds to duplex telomeric DNA and plays a crucial role in telomere protection. TRF2 contains an N-terminal basic domain rich in glycines and arginines (the GAR domain), a central TRFH dimerization domain, a flexible linker region and a C-terminal Myb-like DNA binding domain. TRF2 undergoes extensive post-translational modification, which in turn regulates its stability, DNA binding and cellular localization. Ubiquitylation of TRF2 by Siah1, an E3 ligase, promotes TRF2 degradation and replicative senescence of human primary fibroblasts. TRF2 is phosphorylated in response to DNA damage and this phosphorylation has been implicated in DNA double strand break repair.

### Product Info

<b>Amount :</b>	25 µg / 100 µg
<b>Purification :</b>	Protein G Chromatography
<b>Content :</b>	25 µg in 50 µl/100 µg in 200 µl PBS containing 0.05% BSA and 0.05% sodium azide. Sodium azide is highly toxic.
<b>Storage condition :</b>	Store the antibody at 4°C, stable for 6 months. For long-term storage, store at -20°C. Avoid repeated freeze and thaw cycles.

### Application Note

Western blot analysis: 2-4 µg/ml, Immunohistochemical analysis: 5 µg/ml

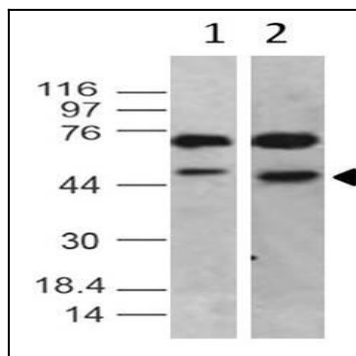


Fig-1: Western blot analysis of TRF2. Anti- TRF2 antibody (Clone: ABM10H3) was used at 2  $\mu$ g/ml on Ramos and Raji lysates.



Fig-2 : Immunohistochemical analysis of TRF2 in human Breast tissue using TRF2 antibody (Clone: ABM10H3) at 5  $\mu$ g/ml.

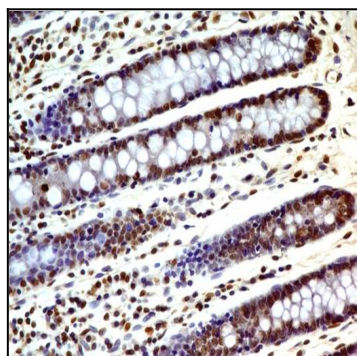


Fig-3 : Immunohistochemical analysis of TRF2 in human Colon tissue using TRF2 antibody (Clone: ABM10H3) at 5  $\mu$ g/ml.



Fig-4 : Immunohistochemical analysis of TRF2 in human Skin tissue using TRF2 antibody (Clone: ABM10H3) at 5  $\mu$ g/ml.

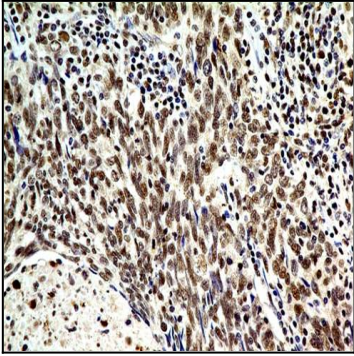


Fig-5 : Immunohistochemical analysis of TRF2 in Squamous cell carcinoma of Lungs using TRF2 antibody (Clone: ABM10H3) at 5  $\mu$ g/ml.