

10-7571: Monoclonal Antibody to Villin (Clone: ABM4E64)

Clonality :	Monoclonal
Clone Name :	ABM4E64
Application :	IHC,WB
Reactivity :	Human
Gene :	VIL1
Gene ID :	7429
Uniprot ID :	P09327
Format :	Purified
Alternative Name :	VIL1,VIL
Isotype :	Mouse IgG2b Kappa
Immunogen Information :	A partial length recombinant Villin protein (amino acids 108-322) was used as the immunogen for this antibody.

Description

Villin is a protein that belongs to the gelsolin family of calcium-regulated actin-binding proteins. It is expressed in differentiated epithelial cells with a brush border such as intestinal villi, proximal renal tubules, oviduct, and seminiferous ducts. Villin shares structural and functional homology with two conserved families of proteins. One family of proteins, which includes gelsolin and adseverin, shares the conserved domain(s) found in the villin core. Villin regulates cell migration, cell death, and epithelial-to-mesenchymal transition underscoring the significance of this protein to epithelial cell function.

Product Info

Amount :	25 µg / 100 µg
Purification :	Protein G Chromatography
Content :	25 µg in 50 µl/100 µg in 200 µl PBS containing 0.05% BSA and 0.05% sodium azide. Sodium azide is highly toxic.
Storage condition :	Store the antibody at 4°C; stable for 6 months. For long-term storage; store at -20°C. Avoid repeated freeze and thaw cycles.

Application Note

Western blot analysis: 0.5-1 µg/ml; Immunohistochemical analysis-5-10 µg/ml

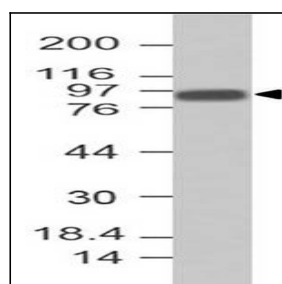


Fig-1: Western blot analysis of Villin. Anti-Villin antibody (Clone: ABM4E64) was tested at 0.5 µg/ml on h Kidney lysate.

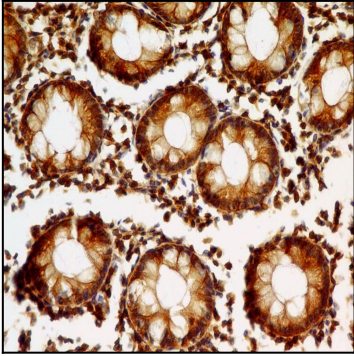


Fig-2: Immunohistochemical analysis of Villin in Colon Adenocarcinoma tissue using Villin antibody (Clone: ABM4E64) at 5 $\mu\text{g/ml}$.