

10-7563: Monoclonal Antibody to c-erbB-2/Her2 (Clone: ABM45F5)

Clonality :	Monoclonal
Clone Name :	ABM45F5
Application :	IHC
Reactivity :	Human
Gene :	ERBB2
Gene ID :	2064
Uniprot ID :	P04626
Format :	Purified
Alternative Name :	ERBB2,HER2,MLN19,NEU,NGL
Isotype :	Mouse IgG2b Kappa
Immunogen Information :	A partial length protein (amino acids 301-522) was used as the immunogen for this antibody (from extra cellular domain of c-erbB-2).

Description

HER2, a known proto-oncogene, is located at the long arm of human chromosome 17 (17q12), encoding a type 1 tyrosine kinase growth factor receptor and the role of HER2 in the development of numerous types of human cancer. HER2 is a transmembrane receptor comprising an extracellular domain (ECD), a single transmembrane domain, and an intracellular domain (ICD) with tyrosine-kinase activity. The high-expression and amplification of C-erbB-2 and its protein products (P185) are found in a wide variety of tumors. HER2 is overexpressed in 10% to 35% of gastric and gastroesophageal junction (GEJ) adenocarcinomas.

Product Info

Amount :	25 µg / 100 µg
Purification :	Protein G Chromatography
Content :	25 µg in 50 µl/100 µg in 200 µl PBS containing 0.05% BSA and 0.05% sodium azide. Sodium azide is highly toxic.
Storage condition :	Store the antibody at 4°C; stable for 6 months. For long-term storage; store at -20°C. Avoid repeated freeze and thaw cycles.

Application Note

Immunohistochemical analysis: 5-10 μ g/ml

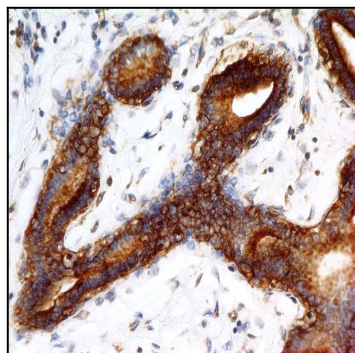


Fig-1: Immunohistochemical analysis of c-erbB2 in human Breast cancer tissue using c-erbB2 antibody (Clone: ABM45F5) at 5 µg/ml.