

## 20-1094: Polyclonal antibody to Mouse TRAF-1

|                                |  |
|--------------------------------|--|
| <b>Clonality :</b>             | Polyclonal   |
| <b>Application :</b>           | IP,IHC,WB  |
| <b>Reactivity :</b>            | Mouse  |
| <b>Gene :</b>                  | Traf1  |
| <b>Gene ID :</b>               | 22029  |
| <b>Uniprot ID :</b>            | P39428   |
| <b>Format :</b>                | Sera   |
| <b>Alternative Name :</b>      | TNF receptor-associated factor 1   |
| <b>Isotype :</b>               | Rabbit IgG   |
| <b>Immunogen Information :</b> | A synthetic peptide of mouse TRAF-1 ( amino acids 51-69 CRADNLHPVSPGSPLTQEK) was used as immunogen for this antibody |

### Description

This antibody recognizes TRAF1. Mouse TRAF1 is a 409 amino acid protein. TRAF1 is a member of TRAF (TNF receptor-associated factor) adapter proteins composed 416 amino acids. The members of this family link a wide variety of cell surface receptors to diverse signaling cascades leading to the activation of NF- $\kappa$ B and mitogen-activated protein kinases. TRAFs are major signal transducers for both the TNF and IL- 1/TLR receptor superfamilies and collectively play important functions in both adaptive and innate immunity. TRAFs also interact with a variety of proteins that regulate receptor-induced cell death or survival, and TRAF-mediated signaling can promote cell survival or interfere with death receptor-induced apoptosis.

### Product Info

|                            |   |
|----------------------------|---|
| <b>Amount :</b>            | 50 $\mu$ l  |
| <b>Content :</b>           | 50 $\mu$ l sera   |
| <b>Storage condition :</b> | Store the antibody at 4°C, stable for 6 months. For long-term storage, store at -20°C. Avoid repeated freeze and thaw cycles. |

### Application Note

WB: 1:1000-1:2000, IHC (paraffin): 1:1000-1:5000, IHC (frozen): Users should optimize, IP: 1:50-1:200

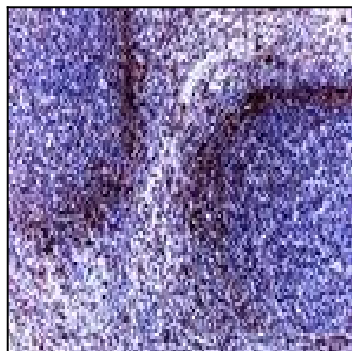


Fig:1 Formalin-fixed, paraffin-embedded mouse spleen tissue section stained for mTRAF1 expression using 20-1094 at 1:2000.