

## 20-1076: Polyclonal antibody to p35 baculovirus

|                                |  |
|--------------------------------|--|
| <b>Clonality :</b>             | Polyclonal   |
| <b>Application :</b>           | IHC,WB   |
| <b>Reactivity :</b>            | Rat,Mouse,Human  |
| <b>Format :</b>                | Sera   |
| <b>Isotype :</b>               | Rabbit IgG   |
| <b>Immunogen Information :</b> | A full-length recombinant of p35 baculovirus protein was used as immunogen for this antibody |

### Description

This antibody recognizes p35 baculovirus protein that strongly inhibits caspase enzymatic activity, and is the the most broadly acting caspase inhibitor protein known. p35 baculovirus forms essentially irreversible complexes with its target caspases in a process that is accompanied by the cleavage of p35, generating two fragments of approximately 10 kDa and 25 kDa. These cleavage fragments remain associated with caspases and thereby block caspase activity. The ability of p35 to inhibit caspases along with the central role of caspases in the apoptotic process enables p35 baculovirus to block apoptosis in a phylogenetically broad range of cells, and in response to a wide variety of apoptotic induction signals.

### Product Info

|                            |   |
|----------------------------|---|
| <b>Amount :</b>            | 50 $\mu$ l  |
| <b>Content :</b>           | 50 $\mu$ l sera   |
| <b>Storage condition :</b> | Store the antibody at 4°C, stable for 6 months. For long-term storage, store at -20°C. Avoid repeated freeze and thaw cycles. |

### Application Note

WB: 1:1000-1:2000, IHC (paraffin): 1:1000-1:5000, IHC (frozen): Users should optimize, IP: 1:50-1:200

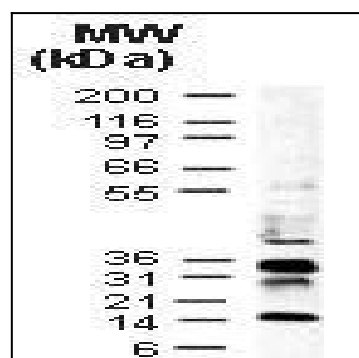


Fig:1 Western blot analysis of in vitro translated p35 baculovirus protein using 20-1076 at 1:2000. Full-length p35 is detected at ~35 kDa, lower molecular p35 breakdown/cleavage bands are also detected.