

## 20-1075: Polyclonal antibody to NOD1

<b>Clonality :</b>	Polyclonal
<b>Application :</b>	WB,IHC,IP
<b>Reactivity :</b>	Human
<b>Gene :</b>	NOD1
<b>Gene ID :</b>	10392
<b>Uniprot ID :</b>	Q9Y239
<b>Format :</b>	Sera
<b>Alternative Name :</b>	NOD1,CARD4
<b>Isotype :</b>	Rabbit IgG
<b>Immunogen Information :</b>	A synthetic peptide of human NOD1 (amino acids 494-512 QLGFRLRALPELGPGGDQQS) was used as immunogen for this antibody

### Description

This antibody recognizes NOD1 (CARD4). Human NOD1 (CARD4) is a 953 amino acid protein. NOD (nucleotide-binding oligomerization domain) proteins are a family of cytosolic proteins which have been implicated in innate recognition of bacteria, the induction of inflammatory responses, and the regulation of caspase activation and apoptosis. NOD1/CARD4 (caspase-recruitment domain 4 gene) is a PRM that recognizes specific peptidoglycan (PGN) components of bacterial cell walls. NOD1 is expressed by cell types that are exposed to PGN under physiological conditions including antigen-presenting cells (APCs) such as macrophages and dendritic cells, and epithelial cells (reviewed in Strober et al. 2006). NOD1 is thought to play a role in the pathogenesis of human gastrointestinal disease and is associated with inflammatory bowel diseases and asthma. It is involved in host defense against *Helicobacter pylori* infection of the gastric mucosa, a chronic infection that can lead to peptic ulcers and gastric cancer.

### Product Info

<b>Amount :</b>	50 µl
<b>Content :</b>	50 µl sera
<b>Storage condition :</b>	Store the antibody at 4°C, stable for 6 months. For long-term storage, store at -20°C. Avoid repeated freeze and thaw cycles.

### Application Note

WB: 1:1000-1:2000, IHC (paraffin): 1:1000-1:5000, IHC (frozen): Users should optimize, IP: 1:50-1:200

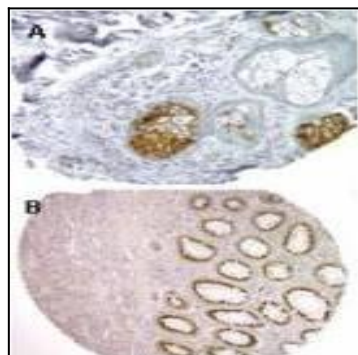


Fig:1 Formalin-fixed, paraffin-embedded section of human sebaceous gland (A) and colon (B) stained for NOD1 expression using NOD1 antibody at 1:2000. Hematoxylin counterstain. 10X magnification

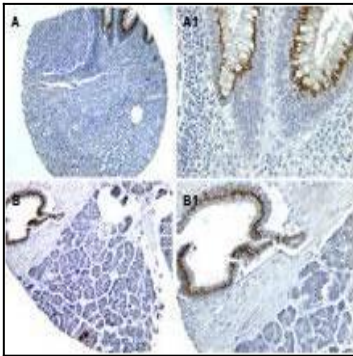


Fig:2 Formalin-fixed, paraffin-embedded sections of human colon (A, A1) and pancreas (B, B1) stained for NOD1 expression (NOD1 antibody at 1:2000) using a DAB chromogen and Hematoxylin counterstain. Magnification: A (20X), A1 (40X). B (10X), B1 (40X).