

## 20-1073: Polyclonal antibody to NIDD/ZDHHC23

<b>Clonality :</b>	Polyclonal
<b>Application :</b>	WB
<b>Reactivity :</b>	Human
<b>Gene :</b>	ZDHHC23
<b>Gene ID :</b>	254887
<b>Uniprot ID :</b>	Q8IYP9
<b>Format :</b>	Sera
<b>Alternative Name :</b>	ZDHHC23
<b>Isotype :</b>	Rabbit IgG

**Immunogen Information :** A Full-length recombinant of human NIDD protein was used as immunogen for this antibody

### Product Info

<b>Amount :</b>	50 $\mu$ l
<b>Content :</b>	50 $\mu$ l sera
<b>Storage condition :</b>	Store the antibody at 4°C, stable for 6 months. For long-term storage, store at -20°C. Avoid repeated freeze and thaw cycles.

### Application Note

WB: 1:1000-1:4000

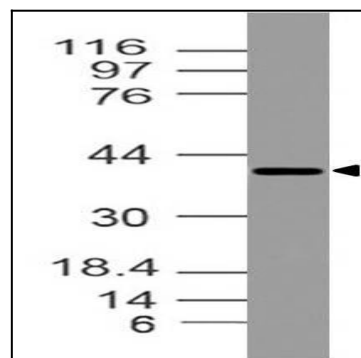


Fig-1: Western blot analysis of NIDD. Anti- NIDD antibody (20-1073) was used with 1:4000 dilution on h Spleen lysate.