

20-1070: Polyclonal antibody to Mcl-1

Clonality :	Polyclonal
Application :	WB,IHC,IP,IF/ICC
Reactivity :	Human
Gene :	MCL1
Gene ID :	4170
Uniprot ID :	Q07820
Format :	Sera
Alternative Name :	MCL1,BCL2L3
Isotype :	Rabbit IgG
Immunogen Information :	A synthetic peptide of human Mcl-1 (amino acids 121-139 SPEEELDGYEPEPLGKRPA) was used as immunogen for this antibody

Description

This antibody recognizes Mcl-1, isoforms 1 and 2. Human Mcl-1 isoform 1 is a 350 amino acid protein. Bcl2 family members can be divided into 3 main subfamilies on the basis of their function and the content of their Bcl2 homology (BH) domains, for example: 1) Prosurvival: Bcl-2, BclXL, BclW, A1, and Mcl-1 and 2) Proapoptotic (multidomain): Bax, Bak, and Bok. 3) BH3-only (proapoptotic): Bad, Bcl-XS, Bid, Bik, Bim, Blk, Bmf, Bnip, Noxa, and Puma. The BH domains are important for function as well as for heterodimerization between family members. Typical prosurvival members have all four BH domains (1-4), whereas proapoptotic (multidomain) members have BH1, 2 and 3 domains and BH3-only members have only the BH3 domain. Overall, the relative ratio of prosurvival and proapoptotic proteins determines the susceptibility of a cell to various apoptotic stimuli. Prosurvival proteins are often elevated in diverse cancers and have the potential to confer resistance to both endogenous cell death stimuli and cancer treatments. Alterations in the ratio or levels of Bcl2 proteins have been also associated with nonmalignant diseases including neurodegenerative diseases, autoimmune diseases, AIDs, Down's syndrome, cardiovascular diseases, diabetes, glomerulonephritis, and muscular dystrophy.

Product Info

Amount :	50 μ l
Content :	50 μ l sera
Storage condition :	Store the antibody at 4°C, stable for 6 months. For long-term storage, store at -20°C. Avoid repeated freeze and thaw cycles.

Application Note

WB: 1:1000-1:2000, IHC (paraffin): 1:1000-1:5000, IHC (frozen): Users should optimize, IP: 1:50-1:200, IF/ICC: 1:500-1:3000

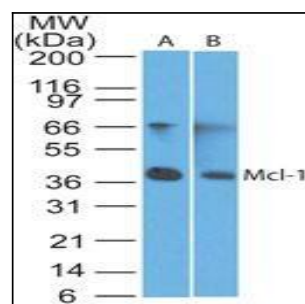


Fig:1 Western blot analysis of Mcl-1 in A) Ramos and B) ThP-1 lysate using Mcl-1 antibody at 1:2000.

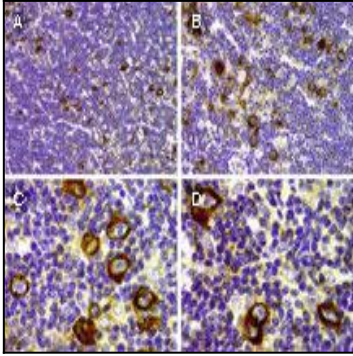


Fig:2 Formalin-fixed paraffin-embedded tissue sections of human diffuse, aggressive Non-Hodgkin's Lymphoma (NHL) of B cell lineage stained for Mcl-1 expression using Mcl-1 antibody at 1:2000. A-D, Mcl-1 staining shown as varying magnifications. Hematoxylin-eosin counterstain.