

Clonality :	Polyclonal
Application :	IP,IHC,WB
Reactivity :	Human
Gene :	BIRC2
Gene ID :	329
Uniprot ID :	Q13490
Format :	Sera
Alternative Name :	BIRC2,API1,IAP2,MIHB,RNF48
Isotype :	Rabbit IgG
Immunogen Information :	A synthetic peptide human cIAP-2 protein (amino acids 532-549 KYIPTEDVSDLPVEEQLR) was used as the immunogen for this antibody

This antibody recognizes cIAP2; which is a 604 amino acid protein belongs to the family of inhibitor of apoptosis proteins (IAP). Resistance towards apoptosis is a hallmark of cancer cells, and overexpression of IAPs can contribute to the development of cancer though inhibiting apoptosis. IAPs suppress mitochondria-dependent and -independent apoptosis by binding to and inhibiting caspases through their BIR domains. In addition to BIR domain, some IAP members also have a RING-type finger motif at their carboxyl-terminal. Smac/DIABLO is a death inducer and functions by inhibiting IAP-caspase interactions, thereby promoting apoptosis. Degradation of cell death inducers like Smac/DIABLO is thought to be a conserved mechanism by which IAPs enhance their anti-apoptotic activity, thereby promoting cell survival. The IAPs, including cIAP2, have widespread tissue protein expression, with expression levels and subcellular localization patterns differing depending on the cell lineage.

Amount :	50 µl
Content :	50 µl sera
Storage condition :	Store the antibody at 4°C, stable for 6 months. For long-term storage, store at -20°C. Avoid repeated freeze and thaw cycles.

WB: 1:1000-1:2000, IHC (paraffin): 1:1000-1:5000, IHC (frozen): Users should optimize, IP: 1:50-1:200



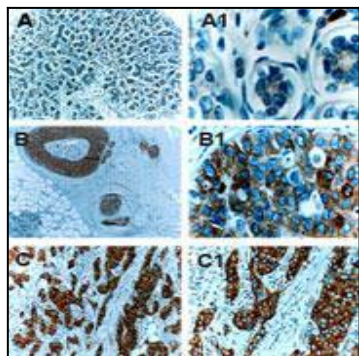


Fig:2 Immunohistochemical analysis of cIAP2 in paraffin-embedded formalin-fixed human mammary gland (female breast) using 20-1056 at 1:2000. A, normal breast tissue. B, ductal carcinoma in situ (DCIS). C. invasive neoplasia. cIAP2 expressed increased sucessively with tumor progression. Hematoxylin-eosin counterstain.