

## 10-4165: Monoclonal Antibody to MUL1 (Clone: ABM4F71)

<b>Clonality :</b>	Monoclonal
<b>Clone Name :</b>	ABM4F71
<b>Application :</b>	WB
<b>Reactivity :</b>	Human
<b>Gene :</b>	MUL1
<b>Gene ID :</b>	79594
<b>Uniprot ID :</b>	Q969V5
<b>Format :</b>	Purified
<b>Alternative Name :</b>	MUL1,C1orf166,GIDE,MAPL,MULAN,RNF218
<b>Isotype :</b>	Mouse IgG1, kappa
<b>Immunogen Information :</b>	A partial length recombinant MUL1 protein (amino acids 146-352) was used as the immunogen for this antibody.

### Description

MUL1 (Mitochondrial E3 Ubiquitin Protein Ligase-1) is a crucial moderator of RIG-I (Retinoic Acid-Inducible-Gene-I) signaling. This protein is localized to the mitochondria where it interacts with MAVS (Mitochondrial Antiviral Signaling) and catalyzes RIG-I post-translational modifications that inhibit RIG-I-dependent cell signaling. MUL1 contains a unique BAM (Beside A Membrane) domain and a C-terminal RING-finger domain. This protein has been implicated in several processes that occur in animal cells such as NF-KappaB activation, innate immunity and antiviral signaling, suppression of PINK1/parkin defects, mitophagy in skeletal muscle, and caspase-dependent apoptosis.

### Product Info

<b>Amount :</b>	25 µg / 100 µg
<b>Purification :</b>	Protein G Chromatography
<b>Content :</b>	25 µg in 50 µl/100 µg in 200 µl PBS containing 0.05% BSA and 0.05% sodium azide. Sodium azide is highly toxic.
<b>Storage condition :</b>	Store the antibody at 4°C; stable for 6 months. For long-term storage; store at -20°C. Avoid repeated freeze and thaw cycles.

### Application Note

Western blot analysis: 4-8 µg/ml

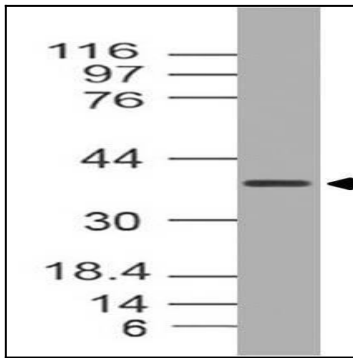


Fig-1: Western blot analysis of MUL1. Anti-MUL1 antibody (Clone: ABM4F71) was tested at 4  $\mu\text{g/ml}$  on human SKM lysate.