

10-4162: Monoclonal Antibody to CD20 (Clone: ABM46C7)

Clonality :	Monoclonal
Clone Name :	ABM46C7
Application :	FACS,WB
Reactivity :	Human
Gene :	MS4A1
Gene ID :	931
Uniprot ID :	P11836
Format :	Purified
Alternative Name :	MS4A1,CD20
Isotype :	Mouse IgG2b Kappa
Immunogen Information :	A partial length recombinant protein corresponding to extra cellular domain of CD20 was used as the immunogen for this antibody.

Description

CD20 is clinically validated as an immunotherapy target for B-cell lymphomas and autoimmune diseases. CD20 consists of large, intracellular, amino- and carboxyterminal portions connected by 4 membrane-spanning domains. Its high expression on malignant B cells and its reported lack of shedding from the surfacemake CD20 an ideal target for antibody-mediated killing. Anti-CD20 antibodies are believed to mediate the therapeutic effect by activation of complement-dependent cytotoxicity (CDC) and largely by antibody-dependent cellular cytotoxicity exerted by recruitment of innate immune effector cells expressing the Fcγ receptor IIIa.

Product Info

Amount :	25 µg / 100 µg
Purification :	Protein G Chromatography
Content :	25 µg in 50 µl/100 µg in 200 µl PBS containing 0.05% BSA and 0.05% sodium azide. Sodium azide is highly toxic.
Storage condition :	Store the antibody at 4°C; stable for 6 months. For long-term storage; store at -20°C. Avoid repeated freeze and thaw cycles.

Application Note

Western blot analysis: 2-4 µg/ml

FACS : 0.5 µg / 10⁶ cells

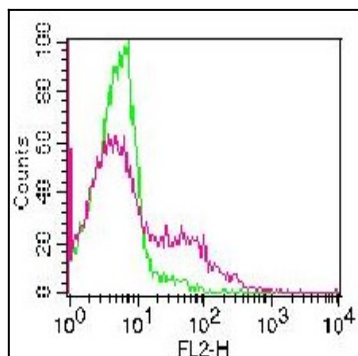


Fig-1: Cell surface flow analysis of hCD20 on human PBMCs (Lymphocytes gated) using 0.5 $\mu\text{g}/10^6$ cells. Green represents isotype control (ABEOMICS); red represents anti-hCD20 antibody (10-4162). Goat anti-mouse PE conjugated secondary antibody (ABEOMICS) was used. (Cells were incubated with primary antibody for 45 min. then washed twice with FLOW Staining buffer (ABEOMICS) by centrifuging at 1100 rpm for 5 min, followed by 30 min incubation with conjugated secondary antibody. Data acquisition was done after washing twice with staining buffer).

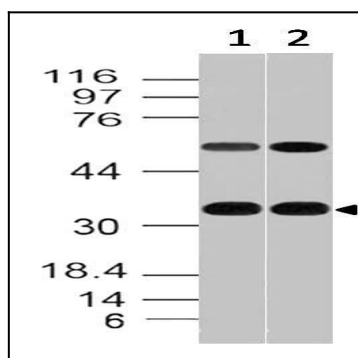


Fig-2: Western blot analysis of CD20. Anti-CD20 antibody (Clone: ABM46C7) was tested at 2 $\mu\text{g}/\text{ml}$ on Raji and Ramos lysates.