

## 10-4163: Monoclonal Antibody to FOXO1 (Clone: ABM4E66)

<b>Clonality :</b>	Monoclonal
<b>Clone Name :</b>	ABM4E66
<b>Application :</b>	FACS, WB
<b>Reactivity :</b>	Human
<b>Gene :</b>	FOXO1
<b>Gene ID :</b>	2308
<b>Uniprot ID :</b>	Q12778
<b>Format :</b>	Purified
<b>Alternative Name :</b>	FOXO1,FKHR,FOXO1A
<b>Isotype :</b>	Mouse IgG2b Kappa
<b>Immunogen Information :</b>	A full length recombinant FOXO1 protein was used as the immunogen for this antibody.

### Description

FOXO1 is one of the fox proteins playing pivotal roles in several human intracellular pathways. These proteins are transcription factors acting as nuclear regulator of transcriptional activity of a number of metabolic processes such as the cellular response to oxidative stress. FOXO1 protein response to oxidative stress may be linked to Alzheimer's disease (AD) by means of insulin brain resistance. FOXO1 plays a critical role in establishing and maintaining the B cell specific differentiation program, but it is also responsible for cell death due to an inappropriate BCR signaling. This protein is highly expressed in B cells, is downregulated in Hodgkin and Reed-Sternberg (HRS) cells of cHL (Classical Hodgkin Lymphoma).

### Product Info

<b>Amount :</b>	25 µg / 100 µg
<b>Purification :</b>	Protein G Chromatography
<b>Content :</b>	25 µg in 50 µl/100 µg in 200 µl PBS containing 0.05% BSA and 0.05% sodium azide. Sodium azide is highly toxic.
<b>Storage condition :</b>	Store the antibody at 4°C; stable for 6 months. For long-term storage; store at -20°C. Avoid repeated freeze and thaw cycles.

### Application Note

Western blot analysis: 2-4 µg/ml, FACS: 0.5-1 µg/10<sup>6</sup> cells

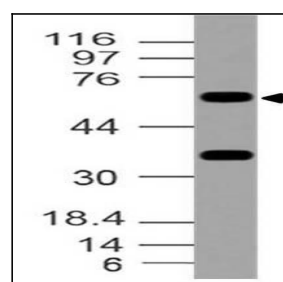


Fig-1: Western blot analysis of FOXO1. Anti-FOXO1 antibody (Clone: ABM4E66) was tested at 2 µg/ml on Jurkat lysate.

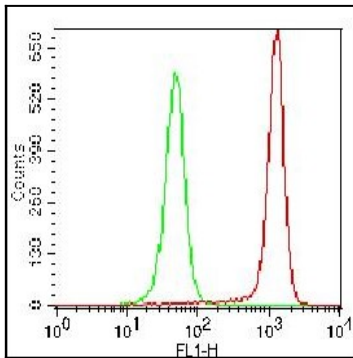


Fig-2: Intracellular FLOW analysis of THP1 cells using 0.5 ug of Anti-FOXO1 antibody (Clone: ABM4E66). Goat Anti-Mouse FITC was used as secondary antibody. Green represents Isotope control (ABEOMICS), red represents AntiFOXO1 antibody.