

10-102: Mouse IgG2a Isotype Control (Clone: 231)

Clonality : Monoclonal
Clone Name : 231
Application : IHC,FACS
Reactivity : Human
Format : Purified
Isotype : Mouse IgG2a

Description

A mouse isotype control is an antibody of the same class (isotype) of immunoglobulin as the specific mouse antibody, but is either myeloma-derived antibody of unknown specificity, or is raised against an antigen that is presumed not to be present on or in the cells under study. Isotype control antibodies are used for the estimation of non-specific binding of target primary antibodies to cell surface antigens.

Product Info

Amount : 100 µg
Purification : Affinity Chromatography
Content : 25 µg in 50 µl/100 µg in 200 µl PBS containing 0.05% BSA and 0.05% sodium azide. Sodium azide is highly toxic.
Storage condition : Store the mouse isotype control at 4°C, stable for 6 months. For long-term storage, store at -20°C. Avoid repeated freeze and thaw cycles.

Application Note

FACS: 0.25-2 µg/10⁶ cells

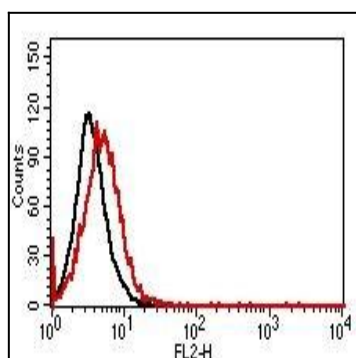


Fig-1: Cell surface flow analysis of Mouse IgG2a isotype control in Ramos cell line using 2 µg/10⁶ cells (Clone: 231). Black represents cell only; red represents Mouse IgG2a isotype control. Goat anti-mouse PE conjugate was used as secondary antibody.