

20-1038: Polyclonal antibody to CARD6 (CARD2)

Clonality :	Polyclonal
Application :	WB
Reactivity :	Human
Gene :	CARD6
Gene ID :	84674
Uniprot ID :	Q9BX69
Format :	Sera
Alternative Name :	CARD6
Isotype :	Rabbit IgG
Immunogen Information :	A synthetic peptide of CARD6 (CARD2) protein (amino acids 156-173 RETALSARKNEKEYDTPE) was used as the immunogen for this antibody

Description

CARDs (caspase recruitment domain) are homotypic protein-protein interaction motifs belonging to the death domain (DD)-fold superfamily (reviewed in Werts et al, 2006). Homotypic interactions among CARD-containing proteins can occur with various proteins, including the inactive zymogen forms of caspases which have N-terminal pro-domains containing complementary CARDs. These interactions can result in the formation of multiprotein complexes, leading to protease cleavage and caspase activation. Most proteins containing a CARD are involved in signal transduction pathways that regulate apoptosis, adaptive immunity, or innate immunity including NF- κ B activation and inflammation. There is a large number of CARD containing proteins, and the unique function of each remains to be fully elucidated. CARD6 is a CARD-containing protein with a domain structure that doesn't appear to be shared by any other protein (Stehlik et al, 2003). CARD6 has been found to associate with microtubules, and is structurally and potentially functionally related to the superfamily of interferon (INF)-inducible GTPases (Dufner, 2006). INF-inducible GTPases belong to a growing family of host defense proteins that confer cell immunity. Specifically, it is thought that CARD6 may act as a pattern recognition receptor that combats pathogens in a cell-autonomous manner. CARD6 is a 1037 amino acid protein, and CINCIN1 is 311 amino acid splice variant of CARD6. This antibody recognizes both CARD6 and CINCIN1.

Product Info

Amount :	50 μ l
Content :	50 μ l sera
Storage condition :	Store the antibody at 4°C, stable for 6 months. For long-term storage, store at -20°C. Avoid repeated freeze and thaw cycles.

Application Note

WB: 1:1000-1:5000

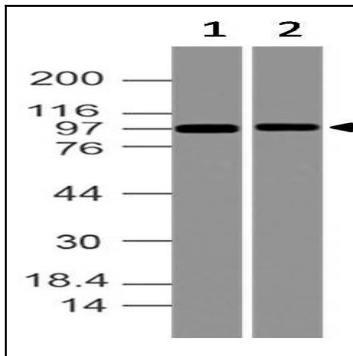


Fig-1: Western blot analysis of CARD6. Anti- CARD6 antibody (20-1038) was used with 1:1000 dilution on (1) MCF-7 and (2) HepG2 lysates.