

10-3004: Monoclonal Antibody to TLR3 (Clone: ABM15D5)

Clonality :	Monoclonal
Clone Name :	ABM15D5
Application :	FACS
Reactivity :	Human
Gene :	TLR3
Gene ID :	7098
Uniprot ID :	O15455
Format :	Purified
Alternative Name :	TLR3
Isotype :	Mouse IgG1 Kappa
Immunogen Information :	A partial length recombinant TLR3 protein (amino acids 25-370) was used as the immunogen for this antibody.

Description

TLR3 (Toll-Like Receptor-3) acts as a major receptor in virus-mediated innate immune response. This protein belongs to TLR (Toll-like receptor) family which comprises of 10-12 type I integral membrane receptor paralogs that recognize pathogen associated molecular signatures and initiate inflammatory responses. TLR3 consist of pathogen-binding ECD (Ectodomains) and cytoplasmic signaling domains, known as TIR (Toll IL-1 Receptor) domains, joined by a single transmembrane helix. TLR3 specifically senses dsRNA (Double-stranded RNA), an almost universal viral intermediate generated during most viral replications. TLR-3 activation induces multiple cellular antiviral responses, including production of IFN-alpha/beta and up-regulation of the anti-HIV cellular factor APOBEC3G. These are a family of pattern recognition receptors expressed by immune cells, including macrophages.

Product Info

Amount :	25 µg / 100 µg
Purification :	Protein G Chromatography
Content :	25 µg in 50 µl/100 µg in 200 µl PBS containing 0.05% BSA and 0.05% sodium azide. Sodium azide is highly toxic.
Storage condition :	Store the antibody at 4°C, stable for 6 months. For long-term storage, store at -20°C. Avoid repeated freeze and thaw cycles.

Application Note

FACS analysis: 2.0 µg/10⁶ cells

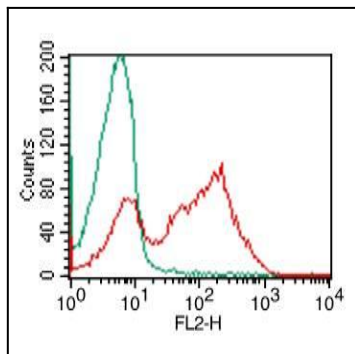


Fig-1: Intracellular flow analysis of TLR3 in human PBMC (lymphocytes) using 2.0 $\mu\text{g}/10^6$ cells of TLR3 antibody (Clone: ABM15D5). Green represents isotype control; red represents anti-TLR3 antibody. Goat anti-mouse PE conjugate was used as secondary.

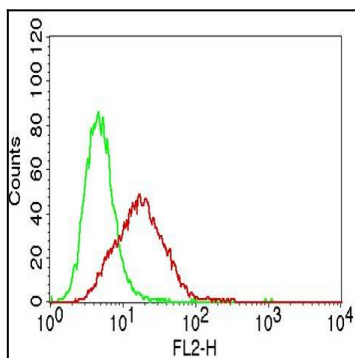


Fig-2: Intracellular flow analysis of TLR3 in human Jurkat using 0.5 $\mu\text{g}/10^6$ cells of TLR3 antibody (Clone: ABM15D5). Green represents isotype control; red represents anti-TLR3 antibody. Goat anti-mouse PE conjugate was used as secondary antibody.