

11-7545: Polyclonal Antibody to E Cadherin

Clonality :	Polyclonal
Application :	WB
Reactivity :	Human
Gene :	CDH1
Gene ID :	999
Uniprot ID :	P12830
Format :	Purified
Alternative Name :	CDH1,CDHE,UVO
Isotype :	Rabbit IgG
Immunogen Information :	A partial length recombinant E-cadherin protein (amino acids 438-556) was used as the immunogen for this antibody .

Description

E-cadherin is a calcium-regulated adhesion molecule expressed in most normal epithelial tissues. It is localized on the surfaces of epithelial cells in regions of cell-cell contact known as adherens junctions. The E-cadherin gene is located on chromosome 16q22.1. E-cadherin is associated with gland formation, stratification, and epithelial polarization. Besides its role in normal cells, this highly conserved gene can play a major role in malignant cell transformation, and especially in tumor development and progression. Selective loss of E-cadherin can cause dedifferentiation and invasiveness in human carcinomas, leading E-cadherin to be classified as a tumor suppressor.

Product Info

Amount :	25 µg / 100 µg
Purification :	Protein A Chromatography
Content :	25 µg in 50 µl/100 µg in 200 µl PBS containing 0.05% BSA and 0.05% sodium azide. Sodium azide is highly toxic.
Storage condition :	Store the antibody at 4°C; stable for 6 months. For long-term storage; store at -20°C. Avoid repeated freeze and thaw cycles.

Application Note

Western blot analysis: 2-4 µg/ml

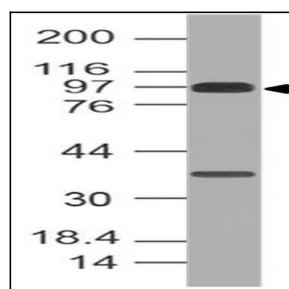


Fig-1: Expression analysis of E Cadherin. Anti-E Cadherin antibody (11-7545) was used at 2 µg/ml on h Stomach lysate.