

## 11-7547: Polyclonal Antibody to CD11C

<b>Clonality :</b>	Polyclonal
<b>Application :</b>	WB
<b>Reactivity :</b>	Human
<b>Gene :</b>	ITGAX
<b>Gene ID :</b>	3687
<b>Uniprot ID :</b>	P20702
<b>Format :</b>	Purified
<b>Alternative Name :</b>	ITGAX,CD11C
<b>Isotype :</b>	Rabbit IgG
<b>Immunogen Information :</b>	A partial length recombinant CD11c protein (amino acids 620-835) was used as the immunogen for this antibody.

### Description

CD11c/CD18 is a monocyte/macrophage-enriched integrin that has been reported to bind to a variety of ligands. These include cell surface proteins (LPS, ICAM-1, ICAM-2, ICAM-4 and VCAM-1), extracellular matrix proteins (collagen I), and soluble ligands (iC3b, heparin and fibrinogen). It is expressed in macrophages, monocytes, granulocytes, subsets of T and B cells, and dendritic cells. CD11c functions as a cell surface receptor for numerous soluble factors and proteins. The interaction mediates leukocyte interactions with other cell types and is a signal transducing receptor. It is found primarily on myeloid cells, where its expression is regulated both during differentiation and during monocyte maturation into tissue macrophages.

### Product Info

<b>Amount :</b>	25 µg / 100 µg
<b>Purification :</b>	Protein A Chromatography
<b>Content :</b>	25 µg in 50 µl/100 µg in 200 µl PBS containing 0.05% BSA and 0.05% sodium azide. Sodium azide is highly toxic.
<b>Storage condition :</b>	Store the antibody at 4°C; stable for 6 months. For long-term storage; store at -20°C. Avoid repeated freeze and thaw cycles.

### Application Note

Western blot analysis: 1-2 µg/ml

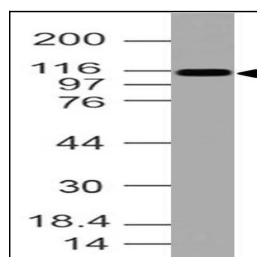


Fig-1: Expression analysis of CD11C. Anti-CD11C antibody (11-7547) was used at 1 µg/ml on THP1 lysate.